



learn**earn****be**healthy

Granite United Way
Community Report 2017

Our Volunteer Leadership

Nannu Nobis, Board Chair
Nobis Engineering, Inc.

Dean Christon, Imm. Past Chair
New Hampshire Housing Finance Authority

Jeremy P. Veilleux, Treasurer
Baker Newman Noyes

William D. Bedor, Secretary
Bedor Management & Investments, Inc.

Sean M. Owen, First Vice Chair
wedü and Talient Action Group

Heather Staples Lavoie, Second Vice Chair
Geneia

Kathleen A. Bizarro-Thunberg
New Hampshire Hospital Association

Joseph J. Carelli
Citizens Bank

Jason E. Cole
Catholic Medical Center

Michael Delahanty
Salem School District

Gordon P. Ehret
Hypertherm, Inc.

Paul J. Falvey
Bank of New Hampshire

Julia N. Griffin
Town of Hanover

Marlene Hammond
Lincoln Financial Group

Charlie Head
Sanborn, Head & Associates

Sally Ann Kraft
Dartmouth-Hitchcock Medical Center

Lori A. Langlois
North Country Education Services

Larry Major
Pike Industries

John M. Mercier
Lake Sunapee Bank

Paul A. Mertzic
Catholic Medical Center

Heidi J. Nadeau
H.L. Turner Group, Inc.

Joseph A. Purington
Eversource Energy

Sue Ruka
Memorial Hospital

Jeffery B. Savage
Retired, Franklin Savings Bank

James H. Scammon
Granite Group Benefits, Inc.

Gary M. Shirk
Bovie Screen Process Printing, Co., Inc.

Evan A. Smith
Hypertherm, Inc.

Tony Speller
Comcast

Charla B. Stevens
McLane Middleton

Rodney E. Tenney
Community Volunteer

Anna Thomas
Manchester Health Department

Robert W. Tourigny
*NeighborWorks of Southern
New Hampshire*

Cass Walker
LRGHealthcare

Steven C. Webb
TD Bank

Rick Wyman
*New Hampshire Mutual Bancorp:
Meredith Village Savings Bank*

**Assess
Needs**

**Develop
Strategies**

**Invest
Resources**

**Create
Solutions**

**Improve
Lives**



Looking Ahead

We're doing more, with more, for more than ever before. This has been an incredible year at Granite United Way, and we have you to thank for that. As a supporter, you've helped us accomplish another record breaking campaign, generating over \$8.7 million and will reach more than 400,000 individuals and families across New Hampshire and Windsor County, Vermont. By working together, we are fighting for the health, education and financial stability of every person in every community.

In addition to the funds raised during our campaign, initiatives like 2-1-1NH, Volunteer Income Tax Assistance (VITA), prescription drug discount programs, our three public health networks, and the more than 800 programs that received funding, we were able to **deliver \$14 million in support** across New Hampshire and Vermont.

This is your United Way. We've accomplished a great deal this year, but there are still challenges ahead. Together, we can face these and find solutions. You are a critical part of our efforts to help friends and neighbors learn, earn and be healthy. These are the foundation for a strong community.

Every year we are inspired by the dedication of our supporters like you. We hope you'll be inspired by the stories you read here, and that we can count on your support again.

Sincerely,



Nannu Nobis
Nobis Engineering
Granite United Way Board Chair



Patrick Tufts
President and CEO
Granite United Way



\$14M
in support delivered
across NH and
Windsor County, VT

400,000
individuals have
benefited from a
program supported
by the annual
campaign

6,055
Loyal Contributors,
donors who have
been giving
for 10 years or more

1 in 3
people in NH are
engaged with United
Way as a donor,
volunteer, or program
participant



Granite United Way is committed to ensuring kids

- Start kindergarten ready for school
- Stay on-track throughout school
- Leave school career ready

Learning at every age is critical to the development of our communities. Over the past few years, our volunteer investments in early childhood education and literacy have been among our most important contributions.

Supporting early childhood education starts from birth. Granite United Way's investment in Lakes Region Child Care Services, Inc. helps to provide access to quality early childhood experiences. "In many ways these are unprecedented times with the pre-K movement, return on investment study, and the current research that demonstrates the benefits to society when quality early care and education is provided. Quality childcare helps parents keep jobs, grow their income and, in return, children grow smarter." Marti Ilg, Executive Director, Lakes Region Child Care Services, Inc.

"Quality childcare is particularly important as we entrust the most precious parts of our lives, our children, for 8+ hours per day to near strangers," said Jeannie Cadarette, a first-time parent whose child attends a United Way-supported childcare facility, Belmont Early Learning Center. "This program has helped my child develop her motor and social skills and, on more than one occasion, helped me find my way as a parent with sound advice and observations."

We've also seen great improvements in literacy, thanks to our investment in Reading Plus®, an online silent-reading program, across many of the communities we serve. Corinne Cascadden, Superintendent of Berlin Schools, where Reading Plus® is implemented, continues to be impressed with the success of the program. "We've seen a remarkable number of our students get back on track with their reading skills. When we started Reading Plus® at Berlin Middle School in the fall of 2015, only 20% of students were performing at or above grade level. After two years of our partnership with Granite United Way, nearly 63% of students are on-track or ahead of track."



were delivered to local children across New Hampshire and Vermont as part of our #GivingTuesday efforts. Pictured here is Patrick Tufts, President and CEO, reading to children at a United Way funded early childhood program.

DONOR DOLLARS IN ACTION

4,472

children accessed high-quality programs promoting kindergarten readiness

10,255

youth engaged in programs to stay on track in school

781

youth received services to be able to leave school career ready



Granite United Way is committed to helping people

- Meet basic needs
- Gain and maintain a stable job
- Build assets and financial knowledge

A healthy community starts with financially stable households.

Mascoma Savings Bank employee, Rachel Lazar, found herself and her family in a financial crisis when her husband lost employment earlier this year. She didn't have to look far for help since Angel Hudson from Granite United Way's Working Bridges program in the Upper Valley was making office visits to her branch as an in-house resource.

"When I met with Angel I was in such a state of crisis. We have an infant son and just bought our home. I wasn't sure how we would manage," said Rachel. "Her calmness was reassuring and I felt a huge weight lifted. She helped us navigate through our situation and even helped my husband find a new job."

Angel Hudson and Prudence Pease are the "faces" of Granite United Way's Working Bridges program, an employer collaborative convened by United Way dedicated to improving workplace productivity, retention, advancement, and financial stability for employees. On average, they see more than 130 clients each month. By minimizing employment barriers and maximizing supports, the program gives employees the tools they need to be successful.

The program has recently expanded to ten companies: Alice Peck Day, Hypertherm, Kendal at Hanover, King Arthur Flour, Simon Pearce, Coop Food Stores, Dartmouth College, Mascoma Savings Bank, Mount Ascutney Hospital, and Timken.

"Working Bridges offers Mascoma Savings Bank employees critical resources to reduce instability in their home lives – making their lives better and making it easier to bring their best selves to their work," said Clay Adams, CEO of Mascoma Savings Bank. "Granite United Way's Working Bridges Program is a valuable resource to Upper Valley employers and employees."

DONOR DOLLARS IN ACTION

64,865

accessed food, housing, legal
and crisis services

1,570

received services to gain and
maintain stable employment

89,662

received services to build
financial assets & knowledge



*Angel Hudson, Working Bridges Coordinator, and
Rachel Lazar, Mascoma Savings Bank employee*

be healthy

Granite United Way is helping people by:

- Creating environments that support healthy behaviors
- Providing access to mental health care
- Supporting substance misuse prevention, treatment and recovery

Together we are saving lives. Madisen Petersen had no idea how his life was about to change in October 2016 when he made the choice to walk into the Manchester Central Fire Station for substance misuse treatment through the Safe Station program, an innovative concept launched in Manchester that enables individuals facing addiction to enter any fire station in the city and immediately access treatment services. Madisen first started experimenting with alcohol and marijuana at the age of fourteen. During high school, peer pressure led to experimenting with more drugs like cocaine, opiates, and eventually, heroin. "When you're a teenager you want to try everything once," said Madisen. "But once is too many."

For the next six years, Madisen struggled with heroin. Retreating from friends and family, he sold his most valuable possessions, and became a person he no longer recognized. After learning about the Safe Station program through social media, his mother offered to drive him to the fire house. Through this program, his life changed when he entered Serenity Place, a partner agency offering treatment and recovery services.

"If it weren't for the Safe Station program, I don't know where I would be today," said Madisen. "Now I am working at Serenity Place and am able to help others make the same positive changes I have. It saved my life."

Unfortunately, Madisen's story is not unique. Granite United Way serves as the lead for three out of the thirteen Regional Public Health Networks in New Hampshire, including the Capital Area Public Health Network, the Carroll County Coalition for Public Health, and the South Central Public Health Network. Through these networks, we serve 54 communities and reach over 600 New Hampshire residents annually. We are supporting the development of a robust continuum of care to provide access to prevention, treatment, and recovery.

In response to the opioid crisis facing our communities, our public health networks provided education and training on the use of Narcan/Naloxone, a prescription medication that quickly reverses the respiratory depression caused by an opiate overdose, to over 1,600 community members at 37 public events and 21 social service agency staff training sessions. Our public health networks have dispensed a total of 959 Narcan/Naloxone kits to New Hampshire residents.

DONOR DOLLARS IN ACTION

5,088

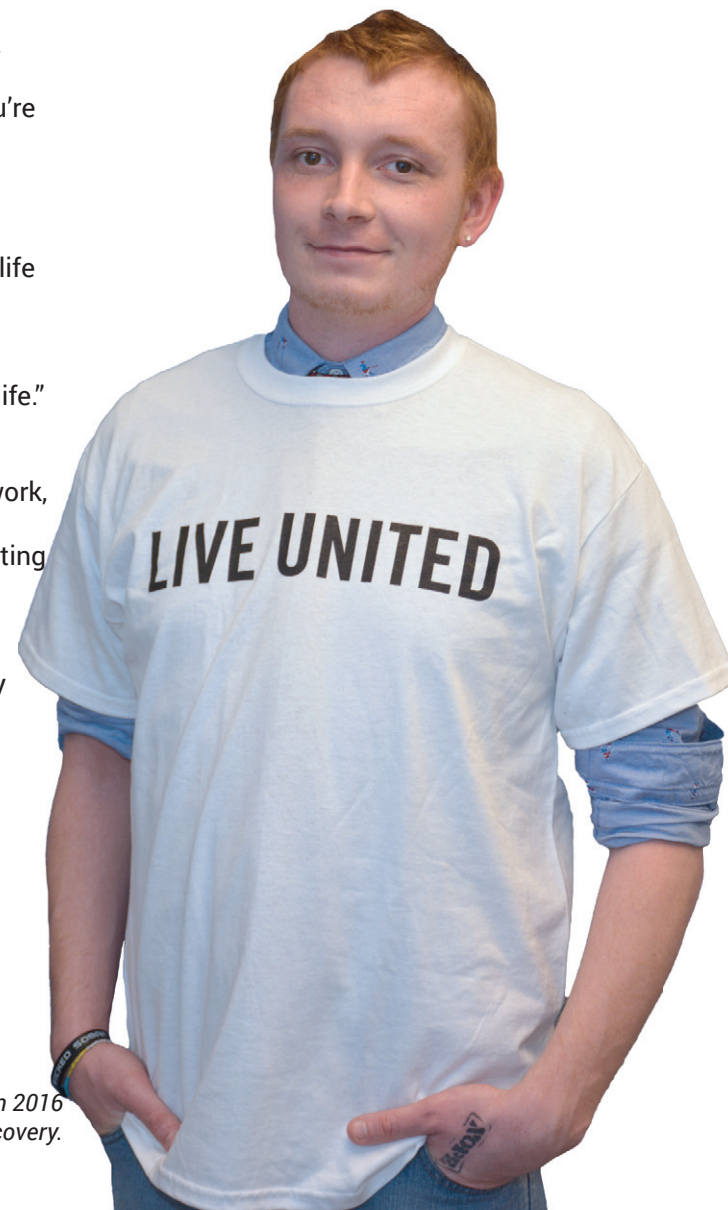
benefited from health
promoting programs & services

10,703

individuals received mental
& behavioral health services

9,940

accessed substance misuse
prevention, treatment &
recovery services



*Madisen Petersen accessed Safe Station in 2016
and is now helping others with their recovery.*

celebrate

Granite United Way celebrates the efforts of individuals and companies throughout our community who have made a significant impact on the lives of our friends and neighbors. We applaud them for their efforts!



2016 GIVE Award Recipients

Patrick Duffy and Jaye Gibson
Elektrisola, Inc.
Dr. Thomas Temme
Tender Corporation
Rist-Frost-Shumway Engineering



2016 ADVOCATE Award Recipients

Safe Station Partners:
The City of Manchester
Serenity Place
Manchester Fire Department
Helping Hands Outreach Ministries, Inc.
AMR Manchester
Hope for NH Recovery
Chief Dan Andrus, Concord Fire Department
Steve Finnigan Allen, Northern Human Services
Peter Christnacht, Copper Cannon Camp
Laconia Area Community Land Trust



2016 VOLUNTEER Award Recipients

Texas Instruments
Kathy Bizarro-Thunberg, NH Hospital Association
Judith Tremer
Tricia Fryman, Woodsville Guaranty Savings Bank
Pleasant Street School in Laconia

LIVE UNITED Award Recipient

Joe Reilly, Eastern Bank

Rumford Leadership Award Recipients

Mary Jane Wallner and Nick Wallner

Employee Campaign Coordinator Award Recipients

Kim Wood, Velcro USA, Inc.
Peter Glendinning, Sanel Auto Parts Co.
Joanne Richardson, Mt. Washington Cog Railway
Candice Murray, Melcher and Prescott Insurance

Granite Awards

Companies that raise \$100,000 or more during campaign

Bank of New Hampshire
City of Manchester
Dartmouth College
Dartmouth-Hitchcock
Eversource Energy
Hannaford Supermarkets
Hypertherm, Inc.
Lincoln Financial Group
New Hampshire Mutual Bancorp
New Hampshire State Employees' Charitable Campaign
Pike Industries, Inc.
PROCON
Southern New Hampshire University
United Parcel Service
Velcro USA Inc.





major support

With the headlines focused on alarming numbers of individuals overdosing in their community, combined with their own personal family tragedy, Joe and Venetia Reilly turned to Granite United Way to see where they could help.

As long-time Alexis de Tocqueville supporters of Granite United Way, the pair were familiar with the way the organization brought together the right teams to solve complex community issues.

“We knew this was the time we could expand our giving and really contribute to some of the positive work being done to promote prevention of substance misuse,” said Joe. “After losing my nephew to an overdose, and then my sister to the grief that resulted from that, Venetia and I wanted to make sure there was access to prevention and treatment programs.”

One of the areas the Reillys’ \$100,000 gift is invested in is Safe Station, the life saving concept launched in Manchester and also featured in the city’s Robert Wood Johnson Foundation Culture of Health Prize. The program is also complemented by 2-1-1NH, where callers can be directly connected with treatment. Their gift also concentrates on prevention, helping to establish several new permanent drop boxes for expired medications and educational programs in the local school system.

“Supporters like Joe and Venetia Reilly are helping us change and save lives every single day,” said Manchester Fire Chief Daniel Goonan. “We have had more than 2,000 walk through the doors since we started this program. It shows how we can make a change by working together.”

“United Way’s role in the community has a unique lens; it can see the importance of collaboration and partnerships with organizations that have the best capacity to make a difference.”

- Joe Reilly

*Venetia and Joe Reilly
Alexis de Tocqueville Society
and Legacy Society members*



day of caring

105
companies
93
agencies

Each September, our Day of Caring volunteers roll up their sleeves and donate some serious “sweat equity” to local nonprofits across New Hampshire and Windsor County, Vermont. They tackle projects like landscaping, painting, gardening, and clean up. This year, we had two schools participate with their entire student population -- Pleasant Street School in Laconia and Parker Academy in Concord! Their students, teachers, and parents all took part in the day!

1,700
volunteers
participated

6,800
volunteer
hours logged

\$169K+
in value of
volunteer hours



Alexis de Tocqueville Society

Granite United Way is fortunate to have the support of 75 donors giving at the Alexis de Tocqueville Society level. Each of these generous supporters are investing \$10,000 or more in our community through their United Way gift.

La Société Nationale (\$100,000 - \$249,999)

Joe & Venetia Reilly

Ordre de Fraternité (\$75,000 - \$99,999)

Mark & Sally Stebbins

1 donor wishes to remain anonymous

Ordre d'Egalité (\$50,000 - \$74,999)

TOSA Foundation

2 donors wish to remain anonymous

Ordre de Liberté (\$25,000 - \$49,999)

Kraig Burnham

The Estate of Elizabeth Koorkanian

Peter & Jane McLaughlin

Ordre de Classique (\$15,000 - \$24,999)

Ellen & Jim Bassett

The Jack & Dorothy Byrne Foundation

Bruce Carrozzi

David Glidden

Dennis & Elizabeth Hager

J. Beatty & Susan Hunter

The Estate of Ralph A. Kirkman

Paul LeBlanc & Pat Findlen

Mundy & Win Piper

Cathleen A. Schmidt

Bayne & Jeanie Stevenson

Wayne & Kathryn Trombly

Norm & Pat Turcotte

Edwin S. Webster Foundation

1 donor wishes to remain anonymous

Membres de la Société (\$10,000 - \$14,999)

Bill & Tina Bedor

Botnick Family Foundation

Fraser Cameron

Lisa Baldez & John Carey

William L. Chapman

David & Ellie Cochran

William & Ann Conrad

Philip L. Cote

Raymond G. & Olga Cote

Richard W. & Barbara J. Couch

Paul & Sue DeBassio

R. David DePuy

Michael & Shawna Dion

Patrick Duffy & Jaye Gibson

Doug & Becky Ewing

Ben Gamache

William & Kathleen Gillett

Richard & Joanne Gustafson

Philip Hanlon & Gail Gentes

J. Michael & Marilyn P. Hickey

Michael & Colette Jurnak

The Kfoury Family

Heather & Brian Lavoie

The Lovett-Woodsum Foundation

Susan & Bruce Manchester

Dan & Cheryl McKenney

Dianne & John Mercier

Al & Margaret Mulley

The Mullikin Family

Nannu Nobis

Nordblom Family Foundation



Sean M. Owen

K. Mark & Susan W. Primeau

Chris & Tom Rath

Dick & Marsha Rawlings

Mark Reilly

Phil & Judy Ryan

Lynn & Gary Schwartz

Gary Shirk & Ann Dippold

Jared & Meredith Stidham

Kurt & Elaine Swenson

J. F. Swope Fund of the NH Charitable Foundation

Patrick & Allison Tufts

Alex & Lisa Walker

Charles A. & Lynne M. Walker

Doug & Tara Weckstein

4 donors wish to remain anonymous

new partners

In October, 50 people will board a bus headed to a New England Patriots' game thanks to the generous and creative \$25,000 "Get on the Bus" Challenge offered by Mark and Sally Stebbins, long-time Alexis de Tocqueville Society members and owners of PROCON.

"We are always looking for ways to engage new businesses," said Jennifer Higgins Pitre, Vice President of Philanthropy. "Mark and Sally wanted to make it even more fun this year by offering an incentive of a trip to a Patriots game."

In an effort to increase corporate engagement and provide employees with the opportunity to give back through the workplace, the Stebbins Family created a fun, fresh, and innovative "Get on the Bus" Challenge Match that was open to any company across the Granite United Way footprint. By offering the match and two tickets to a New England Patriots home game, including transportation and a private reception, the Stebbins made it easy for companies to get involved. Companies could participate by either making a first-time corporate contribution* to Granite United Way or hosting a new workplace giving campaign* and just like that - they were on the bus.



Sally and Mark Stebbins, Alexis de Tocqueville Society members and owners of PROCON.

The response was incredible. Twenty-five new companies hosted campaigns or made first-time corporate gifts.

"We had such a great response this year we've decided to offer the "Get on the Bus" Challenge again," said Sally. "This has been a fun challenge and we were excited to see so many new businesses engaged with United Way!"

**subject to minimum monetary guidelines*



Get on the Bus Businesses

AutoServ
Badger Realty
F.L. Merrill Construction, Inc.
Gaitskill & Company
Graham & Graham, P.C.
Loudon Country Club
Martignetti Companies of NH
McLean Communications
Metro Walls
Mount Washington Cog Railway
Pembroke Sand & Gravel
Pinnacle Mortgage Corp.
Primary Bank
Provident Bank
Redimix
Rise Private Wealth Management
Rist-Frost-Shumway Engineering, P.C.
Secured Network Services
Taylor Community
TITLE Boxing Club
Town of Effingham
Ultimate Auto Repair
W.S. Dennison Cabinets, Inc.
Water Street Café
Wharf Industries Printing, Inc.

Leadership Giving

Thank you to all of our Leadership donors who invest \$1,000 or more into our community each year through their United Way giving.

Champion (\$5,000 - 9,999)

Patricia M. Anderson
James & Gwynne Burkhardt
David & Susan Cassidy
Dean & Evangeline Christon
Dan & Joan Collison
Greg & Margo Connors
William & Susan Cutillo
Greg & Joanne Dickinson
Alice & Arnold Goldstein
Mr. Michael & Dr. Alison Holmes
Bryan Hussey
Jack R. Hutton
Harold & Betsy Janeway
Eric Ketzler
Terrance J. & Christine Large
Robert & Sylvia Larsen
Joe & Pasena Maroun Family Foundation
Jeremy Miller
Thomas & Judy Oxman
Penny Pitou & Milo Pike
Charitable Fund of the NH Charitable Foundation
Robert & Elizabeth R. Porter
Bill & Kim Quinlan
Evan & Sae-Im Smith
Robert & Miriam Smith
Kerri St. Jean
Thomas Tomai
Steven C. Webb
Peter M. Wood
2 Anonymous donors

Cornerstone (\$2,500-4,999)

Daniel L. Andrus &
The Rev. Cheryl Moore
Denise Anthony & Steven DuScheid
Dr. & Mrs. Anthony Aversa
The George Backer Family Foundation
Eda & Robert J. Bauman
David & Ann Beane

Carolyn Benthien
Robert & Toby Bersak
Peter & Peg Blume
William J. Botticello
Thelma Brown
David Burns
Dan & Terry Church
Alison L. Connell
David & Judy Corbit
Calvin & Susan Cramer
Bruce Cronhardt, DMD
Jere & Elena Daniell
Robin & Dick Despina
George & Janet DeVito
Dr. William E. &
Mrs. Patricia G. Dewhirst
Joseph & Lisa DiBrigida
Andrew J. Dolloph
Calvin L. Dowling &
Laura R. Fry
Mr. & Mrs. Frederick A. Downey
Jonathan & Maureen Dowst
Walter & Caroline Dueger
Eric J. Esau
Peter Evers
Lewis Feldstein
Carol Ferro
Mary Ellen Fiske &
Anthony H. Repucci
Beth & James Fowler
Dr. Dominic F. Geffken &
Dr. Irene Rainville
Rolf & Stuart Gesen
Lucy T. Gobin
Joseph & Karen Graham
Richard & Sabine Griffin
Scott Harris & Karen Horsch
Camille Hazel
Karl Heafield
John E. Hughes, Esq.
Nanette Lee Jones
Jay & Cheryl Joseph
Ed & Maddy Kaplan

Bryce Lambert
Robert Larkin
Jenny F. Levy
Christine R. Louis
Dan Luker & Karen Slick
Mado Macdonald
Roxanne Makris
Leif & Deborah Martinson
William & Ann Marvin
Emily Maxfield
Rob & Sharron McCarthy
David & Maryann McCormack
Michael & Mary McLaughlin
Allison McLean
Richard L. Meinhardt
Catherine Meister
Peter & Carolyn Mertz
William G. Moore
Mark & Cappy Nunlist
Susan & Steven Paris
Henry & Jean-Marie Peterson
Robert & Norah Peterson
Susan & Jay Pierson
Lisa Plotnik
Ann & Carl Pomerance
Robert Prunier
Anthony & Gale Pucci
Paul & Claudette Ramsey
Ken Recke
Ronald & Kathy Reed
Karilee E. Reinking
George & Deborah Roussos
Mary & David Ruedig
Sally & Jeremy Rutter
Jim & Dorian Scammon
Joseph Schwartzman
Kathleen J. Sher
Bill & Diane Sherry
Polly & Terry Shumaker
Keith Shute, MD, MMM
Rebecca M. Silva
James Snodgrass &
Gerry Mitchell
Tim & Sue Soucy

Harold C. & Carol H. Sox
Ken & Ilene Stern
Pamela Telfer
John Trummel & Arifa Toor
Mr. & Mrs. Harold Turner
Jeremy & Karen Villeux
H. Thomas & Eleanor Volpe
Susan Wante
Eric V. Wilber
Linda & John Young
Edward Zimmermann
9 Anonymous donors

Benefactor (\$1,000 - 2,499)

Paul Abad
Kerry Abt
Susan Ackerman
Elizabeth L. Agosto
Glenn & Cathy Ahrens
Brad & Judy Aiken
Jaime Ainsworth
Mary Ann Aldrich
Dr. Samuel C. Aldridge
Bob Allen
Spencer L. Allen
Susan W. Almy
Bruce P. Altobelli
Jonathan P. Ames
Dick & Demetria Anagnost
Robert Aranosian
Brenda E. Arbuckle
Charlie & Karla Armenti
David Armstrong
Trevor Arp
Jonas & Joellen Aviza
William Baas
Travis Bannister &
Jennifer Howe
Paul Barbadoro &
Inez McDermott
Louis & Heather Barker
John Barna
James J. Barry &
Mary Quinton-Barry
Virginia M. Barry
John Barthelmes
Gail M. Batstone
Jim & Carol Baum

Michael S. Baymiller
Lindsay & Matthew Becker
Sarah F. Beckley
Kathleen Beliveau
Roberta Berner
Ronald R. Bessette
Shirley Bhutto
Brian & Michelle Bickford
Mary C. Bihle
Steven Birnbaum, MD
Dana Bisbee
Rhonda & Christian Bisson
Ralph A. Blackey
John & Pamela Blackford
Arpy Saunders † &
Jill Blackmer
Bruce Blackstone
Daniel Blakeman
Mark Blanchard
Cynthia Bodah
Sharon Bonte
James & Constance Bouchard
Frank & Debra Boucher
Mary Boucher
Thomas & Mary Boucher
Beth A. Boyle
Daniel Brand
Aaron D. Brandt
Patricia Bray
Karen Breen
Brian Bresnahan
Vincent J. Broderick
Christian Brouillard
Christopher A. Brown
David & Pamela Brown
Stanley W. Brown &
Margaret B. Allen
Amy Brunell
Raul Bueno
David & Carol Burke
Steve & Katie Burke
Heather & David Burns
Judith Burrows &
James Mackay
Stephen & Chris Caccia
Steve Camerino &
Sarah Knowlton
Hester Campbell
Bob & Cindy Campbell
Anne Canty
Michael Capozza
Dennis Card &
Maureen McCanty
Lisa Cariello

David Carignan
Denise Caristi
Susan A. Carlson
Herb & Tracie Carpenter
Michael Carrier
Richard Carson
Sean & Kimberly Carter
Mary E. Casey
David Caswell &
Paula Saltmarsh
Alan Cattier & Carole Meyers
Paula & Bob Caughey
Sara Chaffee & Joshua Kilham
Mark & Beth Chalbeck
Atty. & Mrs. Douglas R. Chamberlain
Kevin Chamberlain
Byron & Susan Champlin
Steve Chapman &
Cathy Shubkin
Dale E. Chase
George & Elibeth Chase
Wendy Chase
Children's Fund of the Upper Valley of the New Hampshire Charitable Foundation
Wayne Chin & Jean Lim
Stacey C. Chiocchio
Ronald & Marjorie Ciotti
Rob & Trish Kiefner
Martha & Stan Clark
Karen Clements
David Clemons
Kris Clerkin
Alan & Suzanne Cleveland
Elizabeth & Bruce Clow
Kimberly M. Cochran
Candice Cogean
Steven & Karen Cohen
Jonathan Colcord &
Marianne Barter Colcord
Jason & Heidi Cole
Corey Derrick Collins
David & Lucie Collins
John D. Colucci & Lisa Colucci
William Conley
Bradford & Kathleen Cook
James S. Cook
Jim & Peggy Cook
George Copadis
Scott & Debora Cote
Tawnya Courtemanche
Ron & Maryjo Covey
Peter & Cathy Cowan
Jeffrey A. Cox

Mark Cross-Powers
Gregg Crowell
Jeffrey & Marinella Crowell
Laura Cullen
Phyllis M. Curcuru
John Christopher Currie
Theresa Curtis
Dan & Shelley Dal Pra
Mary Ellen Daly
Christopher H. Daniell Advised Fund of the NH Charitable Foundation
Clifford G. Darrow
Debra Davis
Steven Davis
Robert Day
Jeffrey P. Deckrow
Jerry Dee
Mike & Joy Degnan
Michael Delahanty
Michael Delaney
Suzanne DeRoche
Bruce Desmarais
Robert DesMeules
Douglas R. Devers
Robert Dewey & Pamela VanArsdale
Robert Dewhirst
Patricia Dickinson
Kirk Dickson
Dana Dickson
Frank & Barbara DiMaggio
Daniel & Maryjane Dolan
Chiara Dolcino
Stacey M. Donlon
Michael & Lisa Donovan
Herbert & Mary Beth Dopfer
Joe Doucet
Mark & Fran Douglas
Paul Drahnak
Jeremy Dry
Scot Drysdale & Patricia Higgins
Carl DuBois
Dennis & Wendy Ducharme
Daniel & Rhonda Duhamel
Kelly Dunlop
Andrew & Donna Dunn
Sara J. Dupont
Scott D. Durand
Kristi & David Durette
Cedric Dustin III
William Dwyer
Robert Dyer
Karrie & Chris Eaton
Anne Edwards
Mark Edwards
Gordon P. Ehret

James Eilenberger
 Jeff & Carole Eisenberg
 Evelyn M. Ellis and Julia &
 Albert A. Anderson
 Scott & Susan Ellison
 Charles Elmore
 Warren & Julia Emley
 Phil Emma &
 Luanne Morgan-Emma
 Linda Enderwick
 John S. Engelman
 BJ Entwisle
 Jessica Erb
 Christopher Eriksen
 Lucia & Jon Evans
 Nicholas Faitoute
 Scott & Laurie Farr
 Dr. Nathan Faulkner &
 Dr. Julia Burdick
 William Faulkner
 Andrea & Paul Felix
 Bruce & Susan Felmy
 Scott & Rachel Filion in
 memory of Jeanne Filion
 Sarah Finne
 Janice & Bill Fischel
 William Flammia
 Woody & Christine Fogg
 Richard P. Foley
 Raymond P. Fortier
 Eileen Fox
 Krista Foye
 Robin J. Frament
 Joe & Dee Frappiea
 Michael J. Frary
 Ginger Fraser
 Doug & Mary Frazier
 W. John Funk & Deborah F. Chase
 Catherine Gagnon
 Ernest Gagnon
 Russ Gaitskill
 Edward Gallagher
 Jim Gallagher
 Donna Gamache
 James Gammon
 Larry J. Gammon
 Antonia Garcia
 Michael Gargiulo
 David F. Gauvain
 Carol & Ben Gayman
 Kathleen A. Geagan
 Marc D. Geaumont
 Martin J. Geheran
 Kelly L. Gelinas
 Charles & Patricia Gerhan
 Philip Germain

Tom Getz
 Jane E. Gile
 Robert & Mary Stuart Gile
 Sean Gill
 Roger & Marsha Gingue
 Andrew & Kathryn Giovanni
 Teri & Cary Gladstone
 Hansi & Bill Glahn
 Dr. Patricia Glowa &
 Dr. Donald Kollisch
 Greg & DeDe Goddard
 Dr. Peter N. Golder
 Victoria Gonin
 David & Patricia Goodman
 Gail Goodness
 Judith V. Goodnow
 Charles & Jaye Goodwin
 Daniel Goodwin
 Rolf & Nancy Goodwin
 David P. & Dorothy M. Goodwin
 Family Fund of the NH Charitable
 Foundation
 Carolyn S. Gordon
 Ann Gormley
 Robert & Colleen Gossett
 David W. Goulet
 James Granger
 Brenda Lee Grant
 John Gray
 Maureen Green
 Kevin & Angela Greene
 Julia Griffin & John Steidl
 Dodd & Misty Griffith
 Clark & Happy Griffiths
 Steven E. Grill
 Maria & Anthony Gudinas
 Jack Gulick
 Mr. & Mrs. Thomas S. Gullage, Jr.
 Denis & Valerie Guy
 Christopher W. Hall
 John M. Hall
 Julie & John Hall
 Lindley H. & Pamela C. Hall
 Lynne Hall
 Mr. Stephen Hall
 Valerie Hall
 Chris Hallowell & Cindall Morrison
 Nicholas J. Hamilton
 Michael Haney
 Katherine M. Hanna
 Bob Hansen
 MaryJo & Steve Hanson
 John & Bonnie Harbottle
 Joseph Harding
 Ms. Nicole M. Harris
 William Hartglass

Maggie Hassan
 Todd J. Hathaway
 Tom & Katherine Haubrich
 Karen Head
 Tim & Keri Hepburn
 Lee Hess
 Bill & Martha Hickey
 Richard & Sandra Hickok
 Bradley D. Higgins
 Carol Hildebrand
 Kathryn & Tom Hildreth
 Karen & James Hillson
 Lauren P. Hilton
 Michael & Louise Hitchko
 Hon. Paul & Peggo Hodes
 Christopher Hodgdon
 Jamie Hoebeker
 Walter Holden
 Christine H. Holman
 Allen Holmes
 Richard & Deborah Holmes
 Nicholas and Brigitte Holmes
 Ralph F. Holmes
 Jeffrey L. Horrell & Rodney F. Rose
 Donna Houle
 Cheryl Hounsell
 Kathy Howard
 James & Cynthia Hunt
 Jill & Peirce Hunter
 Paula Hurley
 Michael Iacobucci
 Steve & Donna Imgrund
 Trish Jackson & Will Millard
 Sarah E. Jacobs
 Alexandra Jamba
 Nicole & Stephen Jambard
 David Janelle
 Dan & Deb Jantzen
 Mr. Joseph Eggleston &
 Dr. Laura Jarmoc
 Thomas Jelinek
 Deborah Jensen
 Roger & Barbara Jobin
 Linda Johnson
 Randi Johnson
 Russel Johnson
 Gary S. Jones &
 Mary-Sue Tuuri
 Lucille Jordan
 Marcia M. Kania
 Robert J. and Erin E. Kay
 Donna Keeley
 Marcia Kelly &
 Barry Harwick
 Mark & Elise Kendall
 Brian T. Kennedy

David Kenney
 Joseph & Kristen Kenney
 M. Dean Kenney
 Tim & Marge Kerns
 James & Margaret Kerouac
 Jeffrey L. Kerr
 Kelley K. Kessler
 Amy Kezar
 Andrew & Bonnie Kimball
 Gayle Kimball Fund of the
 NH Charitable Foundation
 Tupper & Elin Kinder
 Robin Kirby
 Kathryn Kirkland
 William Klapproth
 Leonel Klassen
 Tadeusz Kopacz
 Brian Kossak
 David & Victoria Kuhn
 Matthew Kushner
 Margaret Labrecque
 Richard C. Labrecque
 Christina & Marc
 LaChance
 Bob & Maureen LaFlam
 Martha Laflamme
 Millie & Michael LaFontaine
 Tessa Lafortune-Greenberg
 & Mark Greenberg
 Dallas Lagerquist
 George & Kathy Lagos
 Rich & Mary Lambert
 William R. Lambert
 Linda T. Landis
 Raymond H. &
 Rose Marie Lanier
 Rob & Ann Lanney
 Rick LaPage
 Mark R. LaPrade
 Dr. & Mrs. Eugene W.
 Lariviere
 Elizabeth L. LaRocca
 William & Sandra Larsen
 Sam & Barbara Laverack
 Steve & Ellie Lavoie
 Stephen Lawlor
 Susan Ashooh Lazos &
 Nick Lazos
 Mary Susan Leahy
 Timothy Leblanc
 Judy Leclerc
 Susan N. Leduc
 Joyce A. Leeka
 Michael Lehman &
 Jan McClure
 Carl & Sandra Lehner

Mike & Betty Lenehan
 Kirk & Judy Leoni
 Joseph Lessard
 Arthur & Leslee Letendre
 David Letourneau
 Karen A. Levchuk
 Lori & David Levesque
 Jason Lewis
 Kathleen M. Lewis
 Thomas Lewis
 Michael Liccione
 John & Paula Limongelli
 Henry Lipman
 George & Carol Little
 Kevin C. Livermore
 Terry Livingston
 James & Elaine Loft
 Lisa J. Long
 Linda J. Lorden
 Dana & Anne Low
 Stephen Lubelczyk &
 Alice O'Connor
 Thomas & Kristina Lucas
 Marcus Luce & Jun Chen
 Janice & John Lynch
 John & Susan Lynch
 Colleen Lyons & John DuPre
 Michael B. MacDonald &
 Mary Dawson
 Mr. Richard MacDonald
 Camille Madden
 Susan & Jerome Madden
 Ronald & Lori Magoon
 John Malmberg
 Carolyn J. Maloney
 Jason Mangiardi
 John & Carol Manning
 Steven E. Manteufel
 Alex Manus
 Dr. Craig Markert
 Miah Marquis
 Peter Marsh
 Geoff & Susan Martin
 Chris & Kristin Martin
 Thomas A. Masaryk
 Douglas Mason
 Charlie Mathews
 Steven & Kathleen McAuliffe
 Mark & Doreen McCabe
 Dan McCallum
 Timothy & Marcia McCormack
 Kris McCracken
 Martha McDaniel &
 Stephen Plume
 David J. McDonald
 Marcia & Brian McDonald

Race for the Endowment

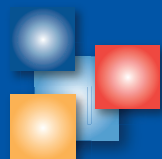


In April 2017, Granite United Way staff member and Alexis de Tocqueville Society member, Meredith Stidham, completed the Boston Marathon. She raised more

than \$16,000 for Granite United Way's Endowment Fund.

David W. McGrath
 Dennis & Susan McGrath
 Kenneth & Joanne McHugh
 Michael McIntire
 Rusty J. McLea
 Catherine McLeod
 Wanda & David McLure
 Ellen Meara & Erzo Luttmier
 Jason & Erica Menard
 Karen & Paul Mertzic
 Daniel Messier
 Benjamin T. Metcalf
 Peter Meyer
 Commissioner Jeffrey A. Meyers
 Matthew Miceli
 Elaine M. Michaud
 Tammy P. Michaud
 Jack Middleton
 James E. Miller
 Nancy A. Miller
 Dr. Shannon E. Mills &
 Anne C. Mills
 Nicholas Milonopoulos
 Agnes A. Miner
 Paula M. Minnehan
 Thomas Mitchell
 Gregory Moffett
 Dan & Tracy Molloy
 Jeff Morin & Betsy Hamlin-Morin
 Phillip Morrilly
 Stephen Morrison
 Jill Mortali
 Rusty & Pam Mosca

Stephen Moynahan
 Bill & Pam Mueller
 Russell Muirhead & Antonia Barry
 Sam & Gail Murdough
 Timothy Murnane
 Christine L. Murray
 Ann-Marie & Martin Murray
 Shawn Muzzey
 Molly Myers
 Julie Myrick
 Heidi & Serge Nadeau
 Susan E. Nadeau
 Doug & Joan Neal
 Hannah C.K. Neidorf
 Robert A. Neidorff
 Margaret H. &
 Richard C. Nelson
 Randy Newby
 Richard Newcomb
 Jeffrey & Carol Nicholas
 Drs. Robert & Carol
 Niegisch
 Peter & Bonnie Nieves
 Marilee Nihan
 James Nolan
 Aaron C. Nolin
 Pete & Kris Nordblom
 Don Nourse
 Dennis O'Brien
 Joseph & Janice O'Donnell
 Peter A. Officer
 Harry Ogle
 Brian O'Hara
 Christine Ojendyk



TOP 50 ACCOUNTS

1. Eversource Energy
2. NH State Employees' Charitable Campaign
3. Dartmouth College
4. Comcast
5. United Parcel Service
6. Dartmouth-Hitchcock
7. Hypertherm, Inc.
8. Lincoln Financial Group
9. Community Development Finance Authority
10. Anthem
11. New Hampshire Charitable Foundation
12. Southern New Hampshire University
13. City of Manchester
14. Bank of New Hampshire
15. PROCON
16. Hannaford Supermarkets
17. Pike Industries, Inc.
18. Velcro USA Inc.
19. New Hampshire Mutual Bancorp
20. Enterprise Rent-A-Car
21. TD Bank
22. Concord Hospital
23. McLane Middleton
24. Citizens Bank
25. Texas Instruments
26. True Value
27. Cogswell Benevolent Trust
28. Catholic Medical Center
29. Elliot Hospital
30. St. Mary's Bank
31. Internal Revenue Service
32. Liberty Utilities
33. TOSA Foundation
34. LRGHealthcare
35. Elektrisola, Inc.
36. City of Concord
37. New Hampshire Housing Finance Authority
38. Granite United Way
39. People's United Bank
40. Dyn Inc.
41. Bank of America
42. Eastern Bank
43. Timken Aerospace
44. Sheehan Phinney
45. Devine Millimet
46. Norwin S. & Elizabeth N. Bean Foundation
47. Harvey Construction Corporation
48. Pentucket Bank
49. Volunteer NH
50. The Rowley Agency, Inc.

Karen & Kevin O'Leary
John Olson
Eric T. O'Melia
Cecilia H. O'Neil
Timothy Sastry O'Neil
Melissa Ordway
Michael & Diane O'Sullivan
Marilyn M. Paganucci
Pamela J. Paquette
Gregory Paquin
Jennifer L. Parent
Eulalie Ana Paris
Christopher & Janine Parkinson
Doug & Donna Patch
Lori E. Paul
Eric Edmonds & Nina Pavcnik
Tracey Pelton
Nick & Ruth Perencevich
Lisa Petralia & Mark Casey

Terri & Conley Peyton
Chris Piccolo
Marc W. Pilotte
Jeff & Jennifer Higgins Pitre
David & Susan Plante
Brian Pogue & Jane Henry
Thomas Potter
Joseph & Gail Purington
Thomas Quarles, Jr.
Donna & Stephen Quinn
Robert Quinn
Vicki Quiram
David Raiche
Jennifer Raimier
Patricia Briggs & Sekhar Ramanathan
John & Judith Ransmeier
C M Ransom
Mary Rapaglia

Stephen Rasmussen
Cindy & Bob Read
Gregg Reed
Margaret Regan
Mark Reidmiller
Alan & Joan Reische
Mark Renaud
Betsey F. Rhynhart
Chip & Ann Rice
Leslie Rice
John & Deborah Richey
Mrs. Mary Jane & Russ Ricker
William & Marilyn Rix
Martha & John Robb
Michael Robitaille
Linda & Rick Roesch
Paula Rogers
Beatrice Rosen
Aaron S. Rosenberg

Michael Rosenblum
Maureen Rotondo
Vickie L. Routhier
Mark C. & Cynthia Rouvalis
Glenn & Paula Rowley
Russell Roy
Ken & Nance Ruhm
Theodore Russell
Patricia Ryan
Donna Sabin
Margie & Jay Salamy
John & Sue Samenfeld
Richard & Anne Marie Samuels
Michael J. Sandahl
Mark & Michele Sandler
Dhaval Saraiya
Robert R. Sargeant
Kyle Sargent
Steven Saunders

Jeff & Jill Savage
Drs. Peter & Susan Saviteer
Mark & Colleen Sawitsky
Les & Barbara Scammon
Ms. Muriel D. Schadee
Harry Schaeffer
Steve & Christine Scheiner
Jerome & Judell Schlachter
Drs. Steven B. Schwartz & Paula A. Leonard-Schwartz
Peter & Claudia Scott
Perry D. Seale
Ellen & David T. Segal
Betsy & Bobby Segal
Jeff Seifert
Roger Sevigny
Gregory Shaw
Victoria Sheehan
David Sherman
Michael & Lori Shipulski
Karl Siegfried
Richard Sigel
Leo D. Simard, Jr.
Marion Simpson
Matthew J. Slaughter & Lindsey O. Klecan
Mary Sliney
Ron & Peggie Slocum
Bill & Roberta Smagula
Chris Smith
Christopher Robert Smith
Lee Smith
Emilie Smith
Eugenia L. Smith
Gregory H. Smith & Yliana Rivas Picon
Kimberly Smith
Carol & Gary Sobelson
Lorraine Sostowski
David Souter
Tony Speller
Patricia Spellman
Henry Spencer
Silvia Spitta
Don St. Germain
Myles Standish
Annika Augusta Marie Stanley-Smith
Jim Staples
Alison & Hank Stebbins
John R. Stebbins
Gregg Stephens & Kathy Raiche-Stephens
Dennis C. Stepro & Charlene Wolfe-Stepro

Charla & David Stevens
Gary & Marie Stevens
Samuel D. Stevens
Bill & Jayna Stevens
Timothy Stickney
Jane Stieglitz
Kevin & Joyce Stone
Michael Stone
William E. Stone
Dick & Ruth Stuart
Chris & Kristin Sullivan
John M. & Rhoda M. Sullivan
John E. Swenson
Murray & Jean Swindell
George Sylvester
David Szymkiewicz
Cathryn M. Taft
Jeffrey & Deborah Tatro
Christine & John Teague
Telaka Foundation
Tom & Sue Temme
Rodney & Roberta Tenney
Anne B. Terhune
Robert E. Terrio
Greg & Kathy Thesing
John & Anna Thomas
Richard S. Thompson
Thomas & Elise Thornton
Mr. Steven Thyng
Beverley Tilley
Douglas & Elizabeth Tillotson
John Tobin & Karen Ryan
Megan & Michael Todd
Maureen K. Toohey
Robert & Ellen Tourigny
Ray & Ellen Touzin
Carol A. Trombly
Truman Charitable Fund of the NH Charitable Foundation
Jennifer Turner
Danny Tyndell
David & Karen Van Der Beken
Adam Varley
Jim & Cindy Varnum
William & Jean Ver Planck
Douglas Verge
Mike & Diane Vlahos
John R. Waddell
Wendy Wade
Charles & Barbara Waite
John Wakefield
Kathy & Roy Walker
Kenneth W. Walker
Nicholas & Mary Jane Wallner
Leigh W. Walls

Pamela Walsh
Charles & Dana Ward
Kyle Ware
Karen Waters
Jack & Pat Weeks
John & Gail Weeks
Ms. Jennifer Weigand
Robert & Carol Weissman
Mark & Allison Welch
Richard Welch
Scoop Welch
David & Kristin Wenger
Timothy Wennrich & Jessica Griffiths
Lynne A. Westaway
Dennis Western
Jeffrey B. & Kathryn M. Wheeler
Kirke & Michelle Wheeler
Sheri Wheeler
Angela M. Whitcher
Lisa White
Peter Craig W. White Family
Heather A. Whitfield
Bert Whittemore
Cheryl Whittier
Charles E. & Nancy E. Wilder
Fund of the New Hampshire Charitable Foundation
Susan L. Wilkes
Charles & Maura Willing
Marilyn Wilson
Robert O. Wilson, DDS
Jeannette Wims
Michael Wimsatt & Chiara Dolcino
Alexander Wirth
Markus W. Wittmann
Christianne & William Wohlforth
Ken & Gayle Wolfe
Lori & Caleb Wood
Patrick & Jane Wood
Stewart & Kristin Wood
David Woolpert
Robert J. & Nancy F. Wyatt
Daniel Young
Oge & Pam Young
Sherry & Gary Young
Susan Youngs
Jeff & Stephanie Zimmerman
Christian & Deb Zimmermann
William Zorn
64 Anonymous donors
† deceased



results

CONDENSED STATEMENT OF FINANCIAL POSITION (March 31, 2017)

| | |
|--|-----------|
| Cash and cash equivalents | \$727,600 |
| Pledges & grants receivable | 3,796,908 |
| Prepaid expenses and other receivables | 64,048 |
| Investments | 465,149 |

TOTAL CURRENT ASSETS 5,053,705

| | |
|---|-----------|
| Investments-endowment | 155,875 |
| Beneficial interest in assets held by others (NHCF) | 1,691,022 |
| Property and equipment, net | 1,028,071 |

TOTAL ASSETS \$7,928,673

| | |
|---|-------------|
| Future allocations payable and donor designations payable | \$3,442,552 |
| Accrued expenses | 106,537 |
| Accounts payable | 68,556 |
| Deferred revenue on designation fees | 44,246 |
| Long-term debt | 239,420 |
| Funds held for others | 29,420 |

TOTAL LIABILITIES 3,930,731

| | |
|-----------------------------------|-----------|
| Unrestricted net assets | (765,957) |
| Temporarily restricted net assets | 4,663,502 |
| Permanently restricted net assets | 100,397 |

TOTAL LIABILITIES AND NET ASSETS \$7,928,673

CONDENSED STATEMENT OF ACTIVITIES AND CHANGES IN NET ASSETS (Year ended March 31, 2017)

| | |
|---|-------------|
| Public support | \$6,648,583 |
| Grant revenue | 1,108,898 |
| Sponsorships and other restricted contributions | 677,938 |
| In-kind contributions | 40,899 |

TOTAL PUBLIC SUPPORT 8,476,318

| | |
|---|---------|
| Administrative fees | 60,566 |
| Investment income | 97,762 |
| Realized and unrealized gain on investments | (3,297) |
| Increase in the value of beneficial interest in trusts, net of fees of \$11,529 | 103,621 |
| Miscellaneous income | 146,634 |

TOTAL SUPPORT AND REVENUE 8,881,604

| | |
|--------------------|-----------|
| Program services | 5,754,597 |
| Donor designations | 1,672,420 |
| Operating expenses | 1,498,895 |

TOTAL EXPENSES 8,925,912

| | |
|--|-------------|
| (DECREASE) IN NET ASSETS FROM OPERATIONS | (44,308) |
| NET ASSETS, BEGINNING OF YEAR | 4,042,250 |
| NET ASSETS, END OF YEAR | \$3,997,942 |

Granite United Way does not charge any member dues or fees from participating charitable organizations

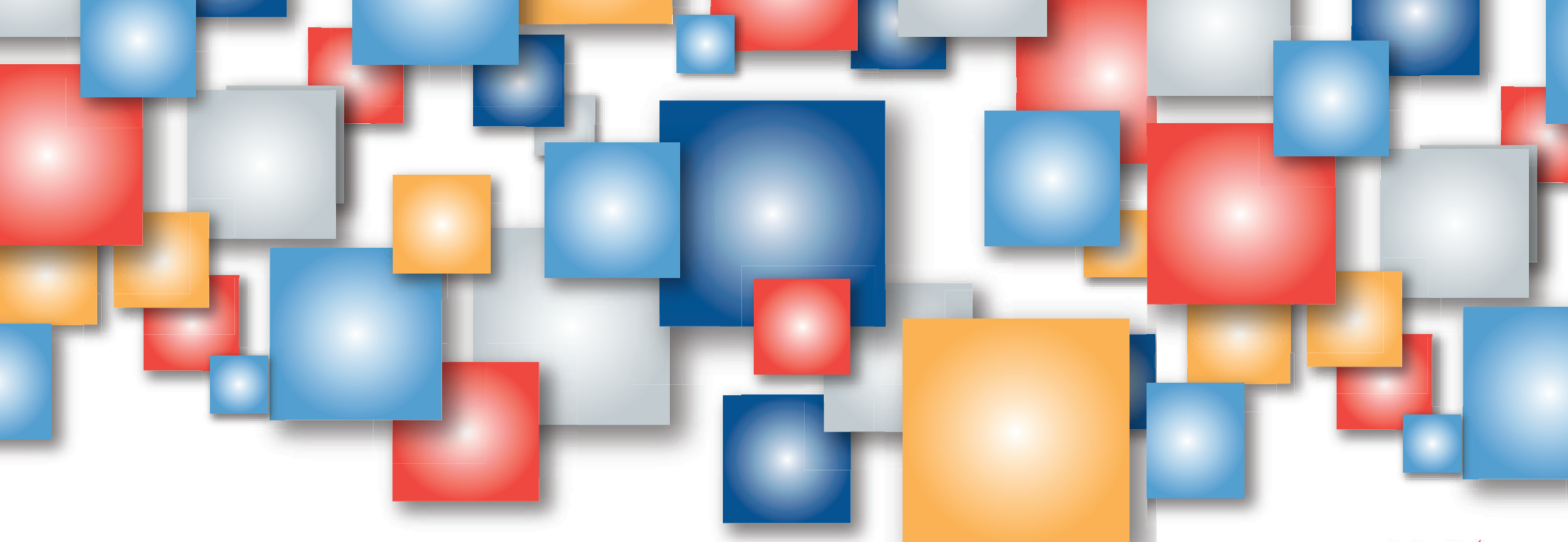
Accolades

Granite United Way's investments in the Neighborhood Health Improvement Strategy and Safe Station in Manchester were key to the **City of Manchester receiving the state's first Robert Wood Johnson Foundation Culture of Health Prize.**

Patrick Tufts, President and CEO of Granite United Way, received the **2017 Granite State Award** from the University of New Hampshire at Manchester for his outstanding achievements, service, and contributions to New Hampshire.

Shannon Swett Bresaw, Vice President of Public Health, was named to the Governor's Commission on Alcohol and Drug Abuse Prevention, Intervention, and Treatment.





Granite United Way



www.graniteuw.org

Email us at info@graniteuw.org



Central Region
61 Beacon Street West
Laconia, NH 03246
603.524.6864

Merrimack County
125 Airport Road
Concord, NH 03301
603.224.2595

North Country
P.O. Box 311
Littleton, NH 03561
603.930.9443

Northern Region
961 Main Street
Berlin, NH 03570
603.752.3343

Southern Region
22 Concord Street
Manchester, NH 03101
603.625.6939

Upper Valley
21 Technology Drive
W. Lebanon, NH 03784
603.298.8499

Whole Village Family Resource Ctr.
258 Highland Street
Plymouth, NH 03264
603.536.3720



Please remember Granite United Way in your estate plans.

Photography throughout this report has
been generously donated by
Suddenly Still Photography

The printing of this report was made possible
through a generous sponsorship from

