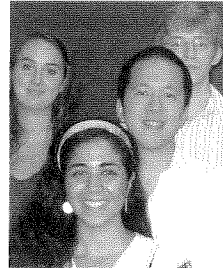
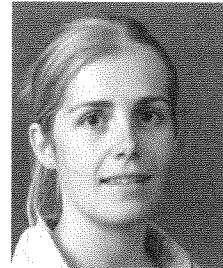


page 2



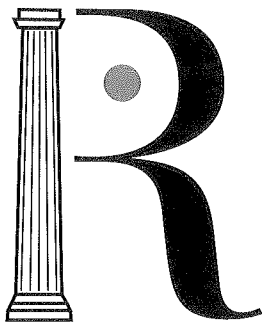
page 3



page 4



page 5



THE ROCKEFELLER CENTER  
AT DARTMOUTH COLLEGE

*A Center for Public Policy  
and the Social Sciences*

t 603-646-3874

f 603-646-1329

<http://rockefeller.dartmouth.edu>

Rockefeller Blitz Bulletin

[Rockefeller.Center@Dartmouth.edu](mailto:Rockefeller.Center@Dartmouth.edu)

**Distinguished Public Servant Keynotes Centennial Celebration Series**



**MARK B. McCLELLAN**

*Director, Engleberg Center for Healthcare Reform,  
Senior Fellow, and Schaeffer Chair in Health Policy  
Studies, Brookings Institution*

**The Brooks Family Lecture**

**Universal Health Care**

Thursday

February 14, 2008

7:00 pm • 3 Rockefeller Hall

Dr. Mark B. McClellan comes to Dartmouth as the Brooks Family Lecturer on February 14 and opens the Rockefeller Center's Centennial Celebration Series. As Senior Fellow, the Leonard D. Schaeffer Chair in Health Policy Studies, and Director of the Engleberg Center for Healthcare Reform at the Brookings Institution, he oversees the study of ways to provide practical solutions for access, quality and financing challenges facing the U. S. health care system. He also co-directs an initiative to link the population-based research programs at Brookings with those of The Dartmouth Institute of Health Policy and Clinical Practice.

McClellan has a highly distinguished record in public service and in academic research. He was the administrator for the Centers for Medicare and Medicaid Services from 2004-2006, the commissioner of the Food and Drug Administration from 2002-2004, and a member of the President's Council of Economic Advisers and senior director for health care policy at the White House from 2001-2002. In these positions, he developed and implemented major reforms in health policy. He also served in the Clinton administration as deputy assistant secretary of the Treasury for economic policy from 1998-1999, supervising economic analysis and policy development on a range of domestic policy issues.

During his government service, he was on leave from his positions as associate professor of economics and associate professor of medicine at Stanford University, where he directed Stanford's Program on Health Outcomes Research.

**2008 CENTENNIAL CELEBRATION AND 25TH ANNIVERSARY**

The Rockefeller Center at Dartmouth marks two special anniversaries in 2008: the 100th birthday of Nelson A. Rockefeller and the Center's 25th anniversary. To honor Nelson Rockefeller's legacy and celebrate our many accomplishments over a quarter century, the Center will host a number of special events and programs. Watch for announcements and posters around campus or connect to <http://rockefeller.dartmouth.edu>.

## Public Policy Minor Courses

### WINTER 2008

PBPL 5 – 10

*Introduction to Public Policy*  
Professor Ronald Shaiko

PBPL 48 – 10A

*Policy Analysis and Local Governance*  
Professor Peter Burns

PBPL 81.2/GOVT 81.04 – 10A

*Lawyers and Public Policy*  
Professor Carol Bohmer

PBPL 81.5/SOCY 39 – 2A

*Poverty, the New Economy, and  
Employment Policy*  
Professor Matissa Hollister

PBPL 81.9/GOVT 83.02 – 3A

*Politics and Markets*  
Professor Linda Fowler

PBPL 84.2 – 2A

*Health Policy Reform*  
Professor Robert Sprinkle

### SPRING 2008

PBPL 81.3 – 2A

*Urban Politics and Public Policymaking*  
(Pending faculty approval)  
Professor Peter Burns

PBPL 84.4 – 10A

*Science and Technology Policy*  
Professor William O'Neal

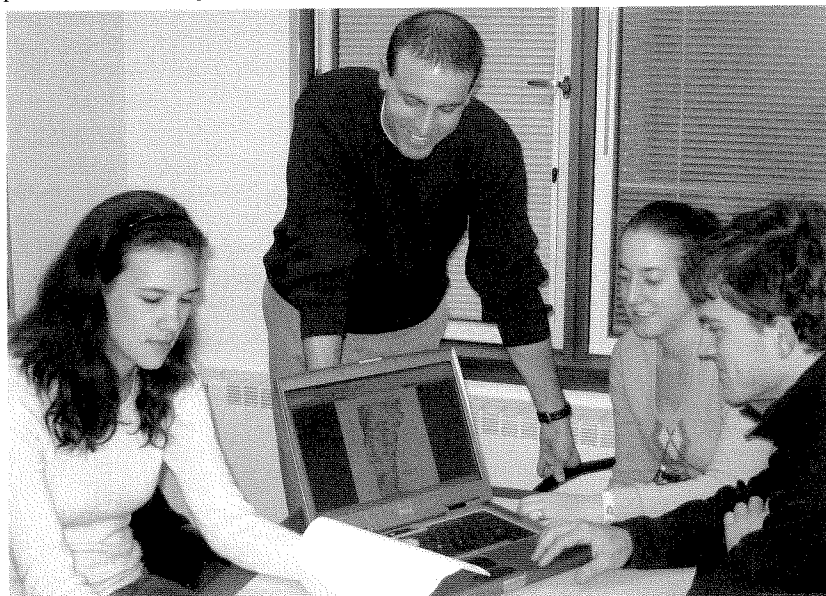
For current information on  
Public Policy Minor courses, see  
[http://rockefeller.dartmouth.edu/students/  
academics/coursesbyterm.html](http://rockefeller.dartmouth.edu/students/academics/coursesbyterm.html)

## Public Policy Students Provide Research Reports to State and Local Governments

Eight working groups from the fall PBPL 45 *Introduction to Public Policy Research* course delved into research on public policy issues of importance to the Vermont and New Hampshire state legislators. On the New Hampshire side, topics included broadband access in the North Country, possible revenue sources to fund highway/bridge construction and maintenance, financial literacy programs, municipal waste management and recycling, and treatment of mentally ill prisoners. Topics requested by Vermont legislators included riparian zone protection, research and development possibilities for cellulosic ethanol, and mental health coverage in prisons. While students conducted the research, Dartmouth faculty mentors were available to guide the process and assist students in their efforts.

As part of the course, they presented their preliminary findings to a panel of faculty members. In addition, for most students, the work on these projects is continuing in the winter term, as they participate as researchers in the Policy Research Shop. When they complete their research, they will then prepare oral and written testimonies that they will present before the relevant committees in the Vermont and New Hampshire legislatures.

Much of the work in the Policy Research Shop has focused on policy issues at the state level. Two projects, however, were disseminated last year to local government officials as the information provided in the reports was most useful to local policymakers (see *Street Trees: A New Hampshire Primer* and *MTBE Presence in Groundwater* at <http://policyresearch.dartmouth.edu/reports/>). In an effort to institutionalize the relationship between policy research and local government, the public policy minor will offer PBPL 48: *Policy Analysis and Local Governance*, taught by visiting associate professor of public policy and Rockefeller Research Associate Peter Burns. As in PBPL 45, students will pursue policy issues that affect governance at the local, county, and regional levels. Local policymakers will introduce policy issues to students during the winter term, and students will pursue these topics during the term and present their preliminary findings in class. These students will also have an opportunity to move into the Policy Research Shop to complete the projects and to present their findings to policymakers in the spring term.



*Policy Research Shop students work on the Riparian Zone Protection in Vermont report that will be presented to the Vermont House Committee on Fish, Wildlife and Water Resources. Pictured from left to right are Allyson Bennett '10, PRS Manager and Rockefeller Research Associate Will O'Neal, Lucy Pollard '10, and Joshua Hurd '10.*

## PLAN AHEAD

### Upcoming Rockefeller Center Deadlines

#### 2008-2009 Dartmouth-Oxford Exchange

DEADLINE: FRIDAY, FEBRUARY 1, 2008

Contact [Jane.Dasilva@Dartmouth.edu](mailto:Jane.Dasilva@Dartmouth.edu)  
for more information

#### 2008 Spring Term Public Policy Internship Grants

DEADLINE: THURSDAY, FEBRUARY 7, 2008

Contact [Suzanne.Todd@Dartmouth.edu](mailto:Suzanne.Todd@Dartmouth.edu)  
for more information

#### March 18-22, 2008 Civic Skills Training

DEADLINE: THURSDAY, FEBRUARY 7, 2008

Contact [Suzanne.Todd@Dartmouth.edu](mailto:Suzanne.Todd@Dartmouth.edu)  
for more information

#### 2008-2009 Rockefeller Leadership Fellows

DEADLINE: TUESDAY, MARCH 4, 2008

Contact [Sarah.Morgan@Dartmouth.edu](mailto:Sarah.Morgan@Dartmouth.edu)  
for more information

#### 2008-2009 Center for the Study of the Presidency

DEADLINE: TUESDAY, MARCH 4, 2008

Contact [Sarah.Morgan@Dartmouth.edu](mailto:Sarah.Morgan@Dartmouth.edu)  
for more information

All applications can be found at  
<http://rockefeller.dartmouth.edu/students>

## Student Profile: Kathleen Breeding '08



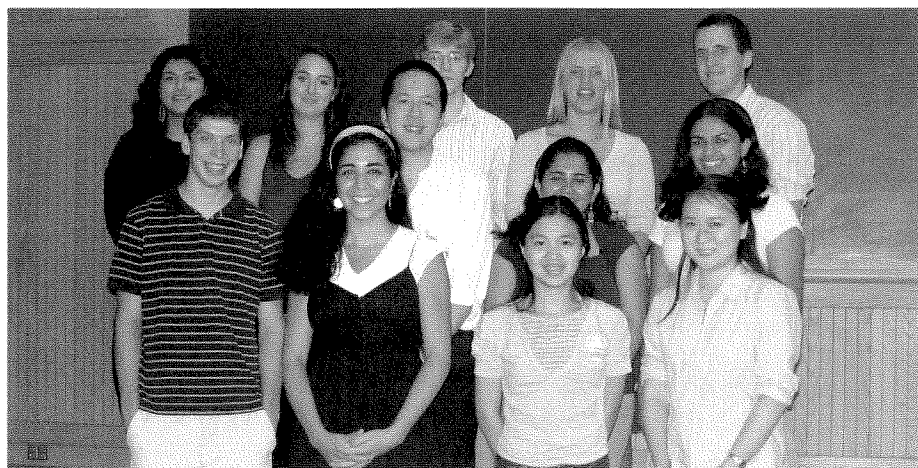
A six-month stint in Latin America working for the Global Health Council as the Henry Leach '28 Intern solidified Kathleen Breeding's passion for women's health issues and initiating grassroots activism on a national scale.

Kathleen (above) has gained clarity about her career path and has renewed her commitment to pursue public health. "Interning at the Global Health Council allowed me to engage with progressive social justice issues," says Breeding, "and enabled me to participate on a macro level. I began thinking in a more global context and expanded my world view." Inspired by the work she did during her internship, Breeding brought it back to Dartmouth, establishing the Advocacy Committee within the Dartmouth Coalition for Global Health.

A Women and Gender Studies major and Chemistry minor, Breeding plans to become a gynecologist and work with women's health issues in the context of public health. On campus, she pursues her interests as an HPV vaccine educator, sexpert, sexual abuse peer advisor, and a mentor against violence and still finds time to conduct research through Dartmouth's Women in Science Project.

## DARTMOUTH-OXFORD EXCHANGE

Twelve Dartmouth students were selected to attend Oxford's Keble College during the fall, winter or spring term. Pictured at left from left to right are: Front row: Emily Ghods-Esfahani '09, Diep Pham '09, Jo Xu '09; middle row: Eric Kaufman '09, Jeffrey Koh '09, Yashodhara Rana '09, Madhavi Menon '09; and back row: Lydia Chammas '09, Ellen Wheeler '09, Benjamin Mueller from Keble, Agata Patyna from Keble, and Derek Weiss '09. Not pictured are Jeff Cui '08, Ka Yan Luk '09, and Anirudh Jangalapalli '09.



## Microfinance and Business Development in Western Kenya



The last 30 years have seen the growth of microfinance and with it a substantial increase in access to capital for entrepreneurs in developing countries. Yet very few of the micro-enterprises financed by these loans go on to become larger enterprises capable of employing people outside the family of the original borrower. Why is it that the recipients of microfinance do not grow their businesses, moving on beyond the “cottage” industry stage? What limits the growth of these businesses? What can be done?

To answer these questions, Assistant Professor of Economics Pascaline Dupas (left), along with her co-author Jonathan Robinson, Assistant Professor of Economics at the University of California at Santa Cruz, will collect original data on the operations of 200 retail micro-enterprises operated by “market women” in rural Western Kenya. As in many other places in rural Africa, self-employment in the informal sector is a major source of income for families in this region, and many women run a micro-business at the local market. Dupas and Robinson will study the interactions between commercial microfinance and the informal practice of merchant credit, investigate the effect of formal savings accounts on market women’s inventories and profits, and estimate the rate of return to additional investment by collecting detailed profit data.

The Rockefeller Center Grant supporting Dupas’s research is one of the twelve given to Dartmouth faculty in the 2007–2008 academic year. “The grant has enabled us to get the research program off the ground,” she says. “We are now applying for an NSF grant and the work done on the Rockefeller Center grant will strengthen our application. In this sense the Rockefeller Center grant functions as incubator funding, which can be leveraged to kick-start a research agenda, and that, I believe, is what makes it invaluable.”

### Faculty Workshop

Punam Keller, Charles Henry Jones Third Century Professor of Management at the Tuck School will make a presentation, entitled “Designing Messages to Change Behavior,” at the Social Psychology Research Interest Group workshop on Tuesday, January 8 from 12:00–1:30 PM.

For more information about Rockefeller Center-sponsored faculty workshops, contact [Jane.DaSilva@Dartmouth.edu](mailto:Jane.DaSilva@Dartmouth.edu) or connect to <http://rockefeller.dartmouth.edu/faculty/workshops/>



John Campbell



Donna Coch



Martin Dimitrov



Karen Fisher-Vanden



Francis Magilligan



Benjamin Valentino



Thalia Wheatley

## Research Grants Awarded to Faculty

Seven members of the Social Science faculty received Rockefeller research grants, bringing the total number of faculty grant recipients to 12.

**John Campbell**  
Professor of Sociology  
*“Knowledge Regimes in Comparative Political Economy”*

**Donna Coch**  
Assistant Professor of Education  
*“The Rhyming Brain in Beginning Readers”*

**Martin Dimitrov**  
Assistant Professor of Government  
*“Communist Bulgaria: Evidence from the Newly Opened Communist Party and State Security Archives”*

**Karen Fisher-Vanden**  
Associate Professor of Environmental Studies  
*“Climate Commitments and Shareholders’ Value: When Does it Pay to be Green?”*

**Francis Magilligan**  
Professor of Geography  
*“Climate Change, El Nino, and Hydrologic Development in the Atacama Desert in Southern Peru”*

**Benjamin Valentino**  
Assistant Professor of Government  
*“Somebody Else’s Son (or Daughter): Social Group Cues, Military Casualties, and Support for War”*

**Thalia Wheatley**  
Assistant Professor of Psychological & Brain Sciences  
*“The Uncanny Valley: The Neural Correlates of Perceived Distortions of Human Form”*



by Andrew Samwick, Director

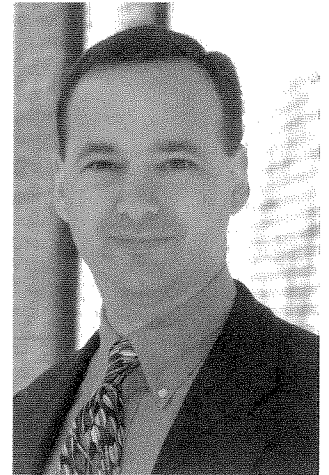
Consistent with the mission of the College, the Rockefeller Center seeks to develop students' potential for leadership. With a broad range of programs, we are focused on leadership skills and experiences both in and out of the classroom, on and off campus. One framework we use is asking students to assess their own strengths and weaknesses, moving on to considering how they would work well on a team, and concluding with a discussion of the way teams work within and across organizations. The Rockefeller Center is no different than other organizations in this respect. Its success over the years has been based on the teamwork of many people who have worked here, and its future success depends heavily on maintaining a staff of talented and dedicated people.

I would like to take this opportunity to acknowledge some changes in the Center's administrative team. Early in the fall term, our longtime Associate Director Roxanne Waldner decided to retire from the Center and from Dartmouth to join her daughter, son-in-law, and twin grandsons in Africa. Her cheerful optimism and unmatched dedication have been an inspiration to many at the Center and across campus. For the past three years, it has been wonderful for me to learn from her and work with her to continue to make Dartmouth a better place for students, faculty, and the community. Decades of students and faculty have benefited from her contributions to the Center and the campus, for which we thank her.

After a careful search to select a successor, I am very pleased to announce that Patricia Erwin-Ploog has been hired as the new Associate Director for Administration and External Relations. Most

recently, she was an Associate Director at Dartmouth's Institute for Information Infrastructure Protection. Pat holds an undergraduate degree in English and Comparative Literature and a graduate degree in Library and Information Science from Indiana University. In 2001, she returned to school for a second master's degree in Internet Strategies Management from Marlboro College. As the

Center's new Associate Director, Pat is responsible for general administration of the Center, including developing and monitoring budgets, overseeing the marketing and communications strategy, and evaluating the performance of Center programs. We are excited and fortunate to have her as the newest member of our team, and invite you to join us in welcoming Pat to the Center at your earliest opportunity.



*Center Director Andrew Samwick is Professor of Economics. He teaches courses in finance and conducts research on Social Security reform, saving, retirement, taxation, and compensation. He served as the chief economist on the staff of President Bush's Council of Economic Advisers in 2003-2004 and has testified three times before Congress.*



## Alumna Mentor: Liza Veto '93

Building curricular and co-curricular programs to enhance students' understanding of public policy and to assist their transition from the academic sphere to a professional life in policy is a key role that the Rockefeller Center plays for Dartmouth undergraduates, says Liza Veto '93 M.S.W. "As someone who has been in federal service for over nine years, I see many senior leaders retiring or preparing for retirement across government agencies. It is essential that well educated and well prepared graduates are ready to pursue careers in public service."

As a mentor to Maura Cass '10, who was a Rockefeller First-Year Fellow and interned at the Centers for Disease Control and Prevention during the summer term, Veto saw first-hand the benefits of the intensive 5-day Civic Skills Training that Cass had before her internship began. "The intensive crash course provided a superb toolkit to prepare Maura from the first day of her internship, including how to write a press release and how to make the most out of networking opportunities." Of particular interest was the fact that the Center makes this opportunity available so early in the student's Dartmouth career to build a solid foundation for public service experiences.

Veto and fellow alumnae Lauren Kennedy '02 and Cara Abercrombie '97 also hosted a luncheon for all the summer 2007 First-Year Fellows in DC at which they talked about two federal recruiting programs: the Presidential Management Fellows (PMF) and Emerging Leaders Programs. All three alumnae entered federal service through the PMF program. "It was exciting for all of us to talk with this enthusiastic group of students about their aspirations for continuing their public service work, both at Dartmouth and after commencement," she said, and "having the opportunity to participate in their development toward that goal."

If you are a Dartmouth alumnus or alumna in the Washington, DC area working in the public or non-profit sectors who could serve as a mentor to a First-Year Fellow in summer 2008, please contact [Suzanne.Todd@Dartmouth.edu](mailto:Suzanne.Todd@Dartmouth.edu) to find out more about the critical role that mentors play in the program.

Veto is a public health analyst in the Office of the Director at the Centers for Disease Control and Prevention in Washington, DC.



## winter 2008 • public events

---

WEDNESDAY, JANUARY 23  
4:30 PM • DARTMOUTH 105

### **The Stephen R. Volk Lecture**

### **Emancipation from Mental Slavery: Public Education & Social Change**

MARI MATSUDA

*Activist and Professor of Law at Georgetown University Law Center*

A Martin Luther King Celebration Event supporting the Dartmouth Centers Forum 2008 theme, "Class Divide" and co-sponsored by the Rockefeller Center for Public Policy and the Social Sciences, Dartmouth Lawyers Association, Legal Studies Faculty of Dartmouth, Office of Institutional Diversity and Equity and the Office of Pluralism and Leadership

MONDAY, JANUARY 28  
4:30 PM • FILENE AUDITORIUM, MOORE HALL

### **Freedom Is Not Enough: The Struggle to Open American Workplaces to All**

NANCY MACLEAN

*Professor of History and Chair of the History Department at Northwestern University*

A Martin Luther King Celebration Event sponsored by the Rockefeller Center for Public Policy and the Social Sciences

WEDNESDAY, JANUARY 30  
4:30 PM • 3 ROCKEFELLER HALL

### **Class and Racial Divisions: Challenges and Opportunities**

ANNELISE ORLECK

*Professor of History at Dartmouth College*

PETER BURNS

*Research Associate, The Nelson A. Rockefeller Center for Public Policy and the Social Sciences, Dartmouth College*

DEBORAH KING

*Associate Professor of Sociology at Dartmouth College*

LOURDES GUTIÉRREZ NÁJERA

*Assistant Professor of Anthropology at Dartmouth College*

In support of the Dartmouth Centers Forum 2008 theme, "Class Divide"

THURSDAY, FEBRUARY 7  
4:30 PM • 2 ROCKEFELLER HALL

### **Eat, Drink, and Be Merry: The Spread of Obesity, Substance Use, and Happiness in Longitudinally Resolved Social Networks**

NICHOLAS CHRISTAKIS

*Department of Health Care Policy at Harvard Medical School*

Co-sponsored with the Department of Sociology, Dartmouth College

THURSDAY, FEBRUARY 14  
7:00 PM • 3 ROCKEFELLER HALL

### **The Brooks Family Lecture**

### **Universal Health Care**

MARK MCCLELLAN

*Director, Engleberg Center for Healthcare Reform, Senior Fellow, and Schaeffer Chair in Health Policy Studies, Brookings Institution*

The Nelson A. Rockefeller Centennial Lecture Series