

DARTMOUTH STRATEGIC MASTER PLAN

ALUMNI COUNCIL
17 MAY 2019

- Review the Scope and Goals
- Process and Engagement
- Understanding the Campus
- Next Steps

THE DARTMOUTH STRATEGIC MASTER PLAN WILL:

Be a **process to engage** the campus community;



Develop a **common language** with which to discuss opportunities;



Create a **catalogue of options**; and

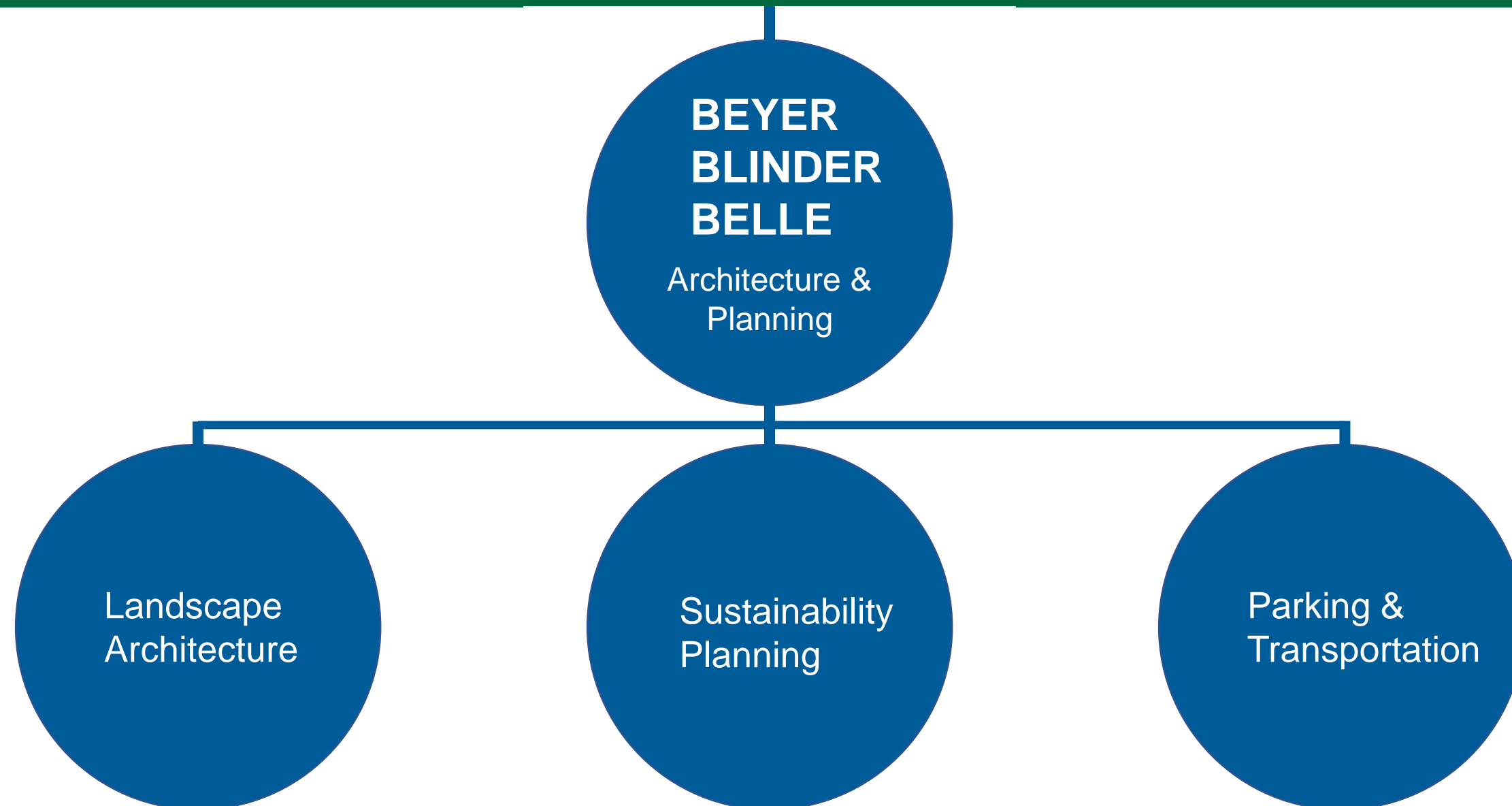


Provide a **flexible framework** to evaluate options and align short- and long-term physical planning.

PLANNING GOALS



DARTMOUTH



THE MASTER PLANNING TEAM

Themes for thinking about the future of the campus

Priorities

- Academic & Research
- Residential Life & the House System
- Campus Life & Wellness
- Athletics
- Administration
- Access & Inclusion
- Community

Spatial Themes

- Buildings
- Landscape
- Mobility & Parking
- Accessibility
- Information Technology
- Stormwater
- Sustainability
- Wayfinding & Signage

SCHEDULE

KICK OFF DATA GATHERING	PRELIMINARY CONCEPTS OUTREACH, VISIONING, PRINCIPLES, SITE STUDIES, AND OVERALL SYNTHESIS	DRAFT MASTER PLAN	FINAL MASTER PLAN
--	--	------------------------------	------------------------------

ENGAGEMENT

**PRIORITIZE
AND
DECIDE**

EXECUTIVE
COMMITTEE

**DIALOGUE
AND
GUIDE**

ADVISORY
COMMITTEE

**MASTER
PLAN
TEAM**

**OUTREACH
AND
ENGAGE**

ALUMNI

FACULTY

STAFF

STUDENTS

TOWN

REGION

**REVIEW AND
SHARE
INFORMATION**

WORKING
GROUP

CAMPUS & REGIONAL ENGAGEMENT

ENGAGEMENT PLAN



- Listening Sessions
 - Town Halls
 - Open House
 - Forums
 - Focus Groups
 - Interviews
 - Survey
 - Website
- (www.dartmouth.edu/~masterplan/)

LEADERSHIP ENGAGEMENT

MARCH

- Executive Committee
- Advisory Committee

APRIL - MAY

Deans (Interviews)

- Arts & Sciences
- Guarini School
- Geisel School of Medicine
- Thayer School of Engineering
- Tuck School of Business
- Dean of Libraries

Faculty

- Committee on Priorities

Senior Leadership

- Executive Committee
- Advisory Committee

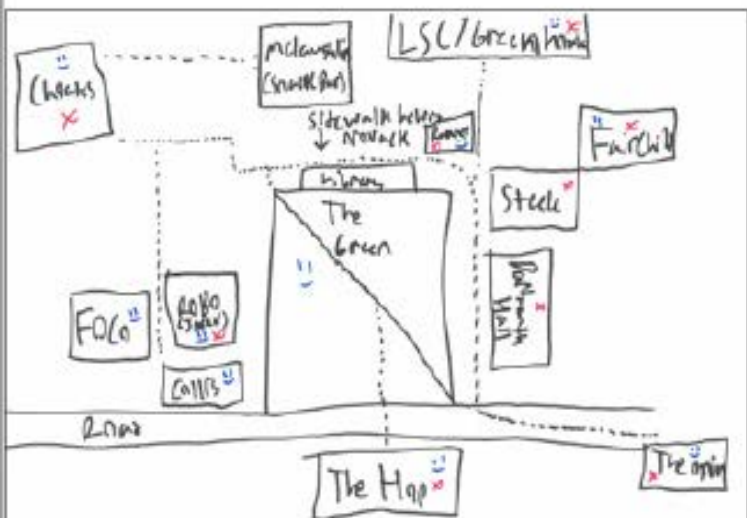
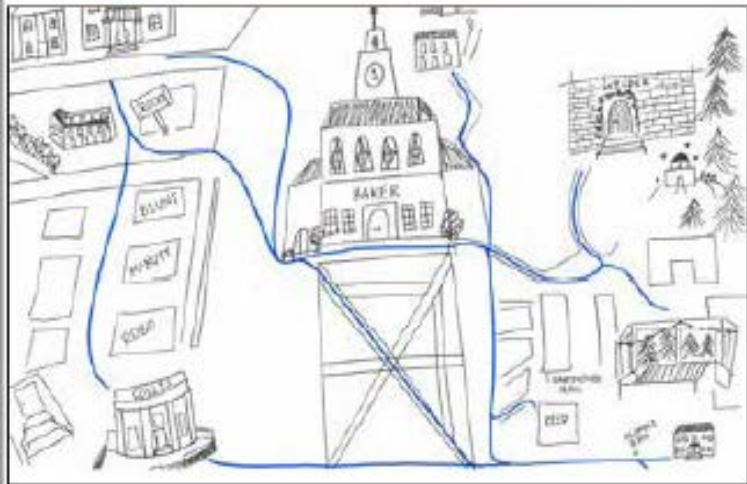
Student Affairs

COMMUNITY ENGAGEMENT



APRIL – MAY

- Undergraduate & Graduate students: 3 activities
 1. “Day in the Life” drawing
 2. Campus character experience word cloud
 3. Social, study, secret spaces mapping
- Meetings with Hanover, Lebanon, Norwich Planning Offices
- Public Open House: 8 interactive stations
- Faculty, staff, & student on-line survey (5/17 release)
- Alumni & community website survey (5/20 release)
- 2-hour workshop with Hanover Town staff: parking/traffic; sustainability; landscape; development
- Downtown workshop scheduled with Chamber of Commerce & Town
- Alumni Council meetings



WORKING GROUP

MARCH

- Working Group Review of Master Plan Scope

APRIL

- 3-hour Building Conditions Workshops and follow-up review
- 3-hour Properties Workshop and follow-up review

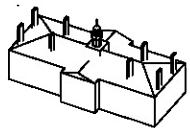
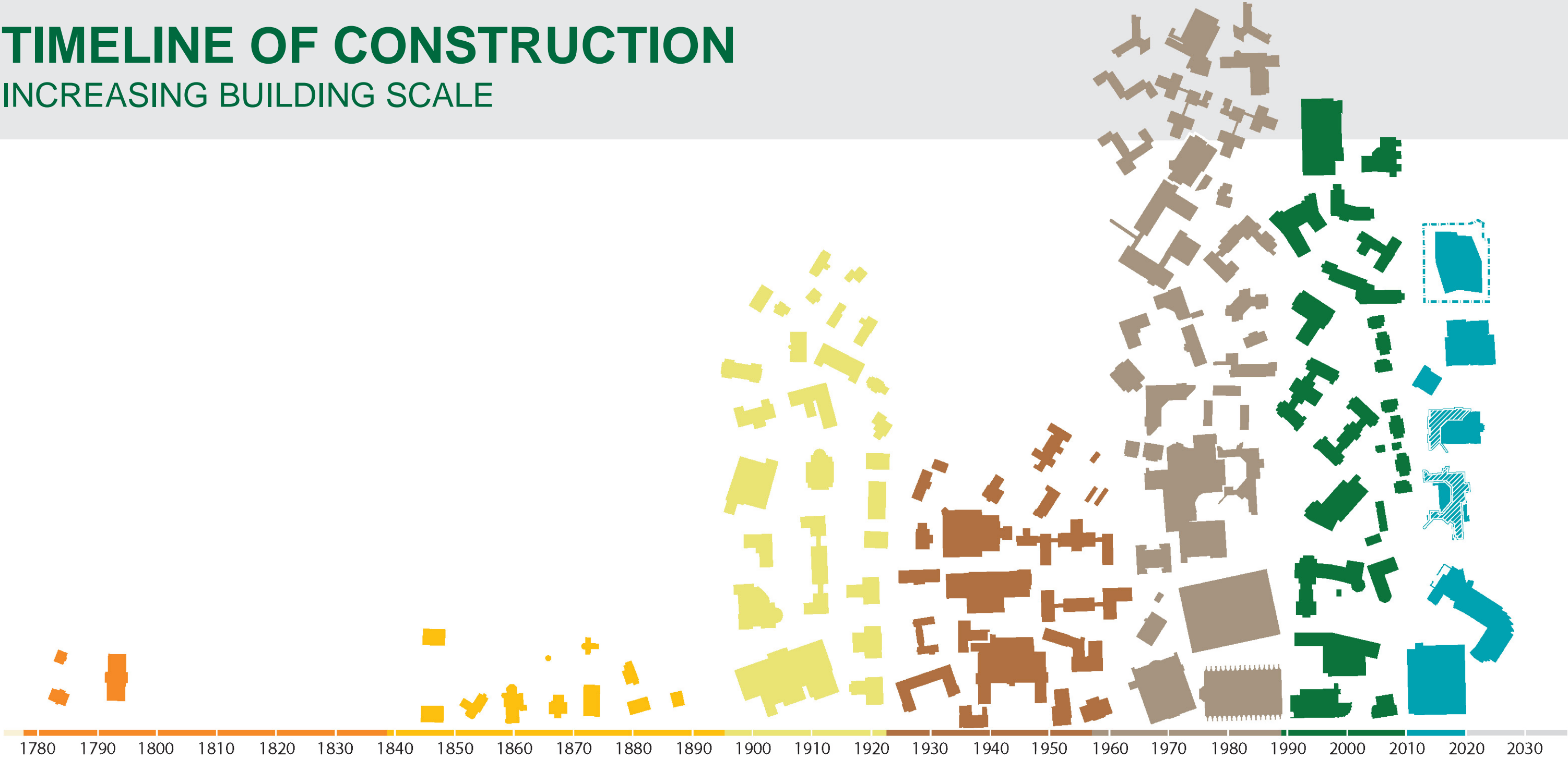
MAY

- 2-hour Workshop on landscape, stormwater, parking, transportation, and sustainability

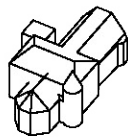


TIMELINE OF CONSTRUCTION

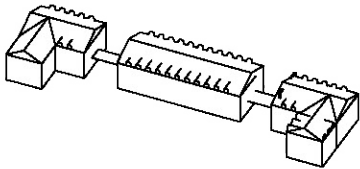
INCREASING BUILDING SCALE



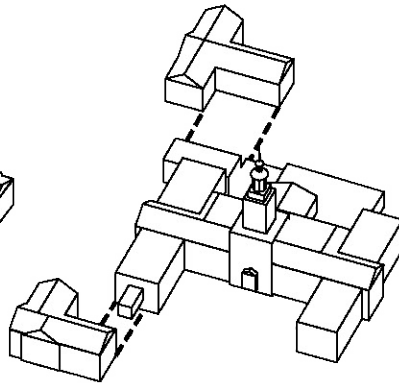
Dartmouth Hall



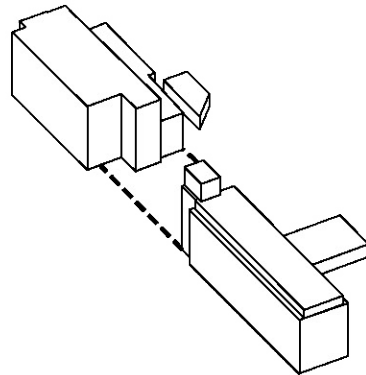
Wilson Hall



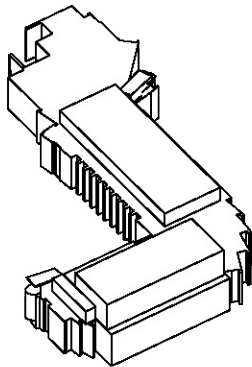
Massachusetts Hall



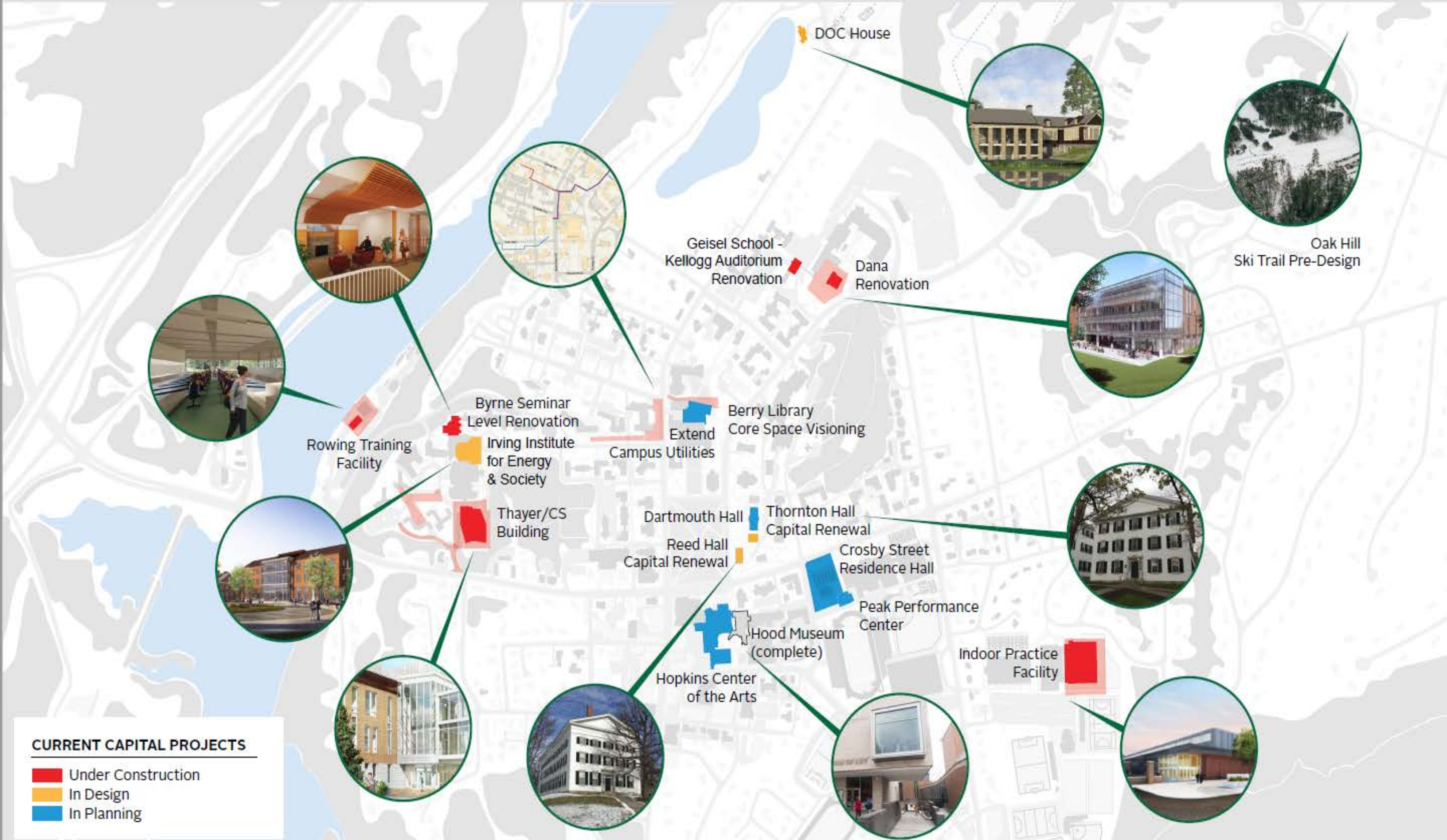
Baker-Berry Library
Carpenter Hall
Sanborn House



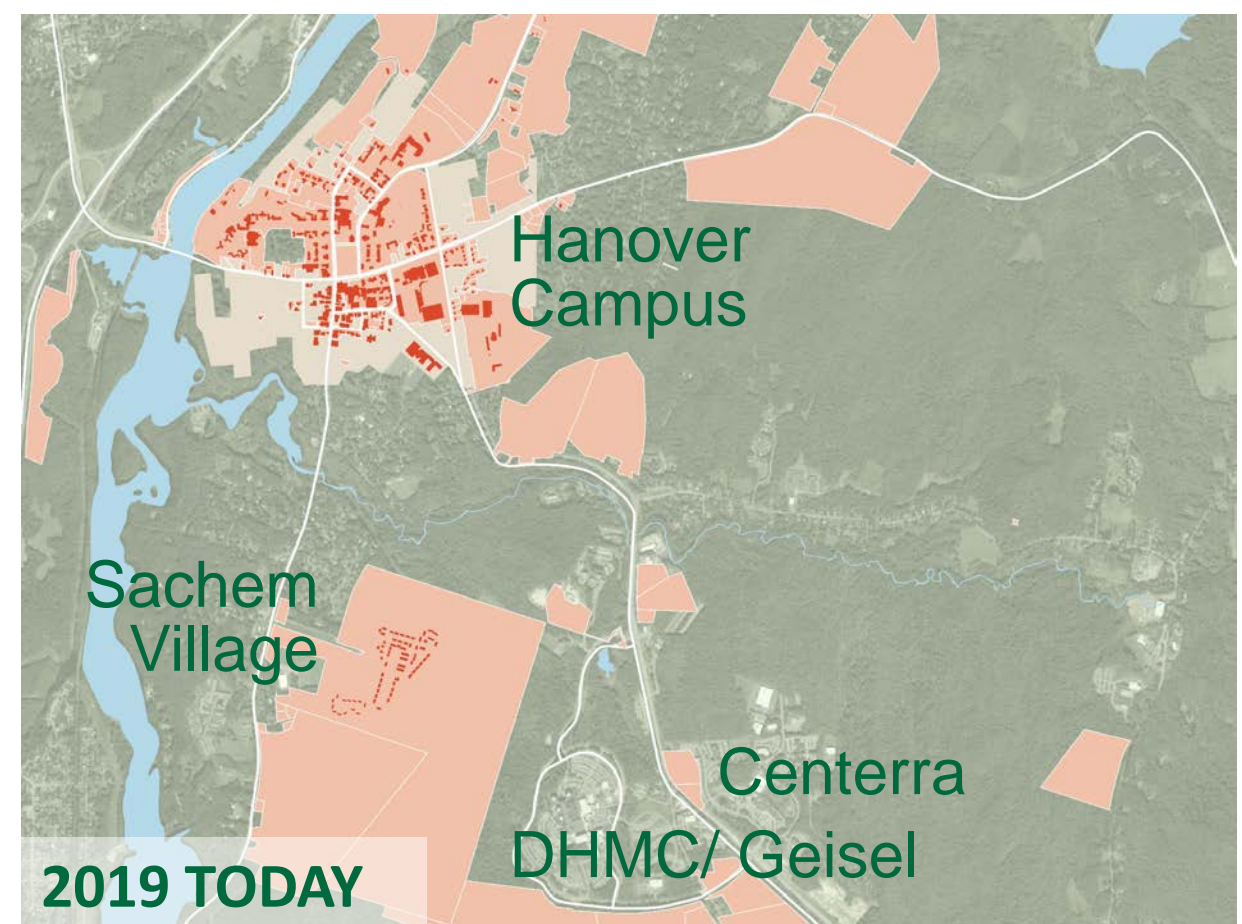
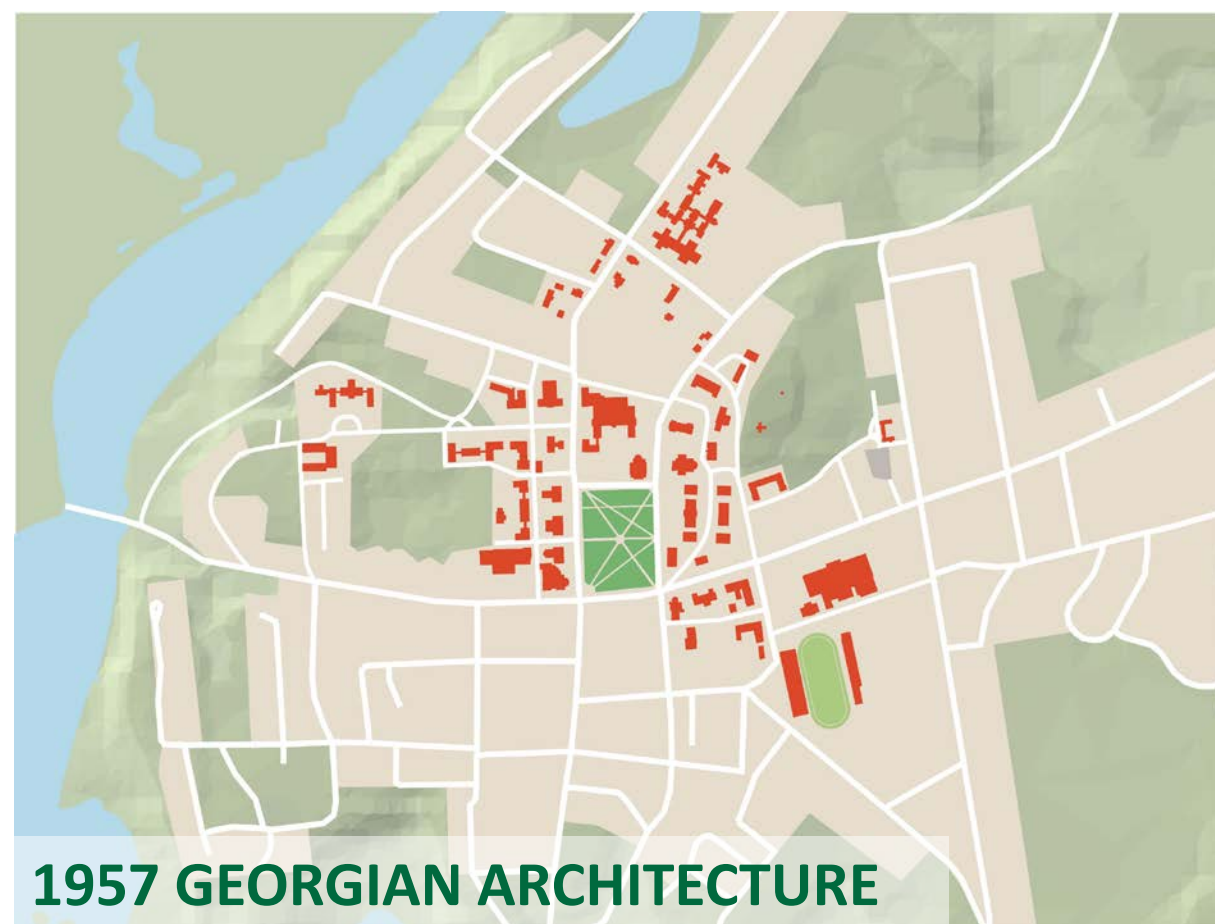
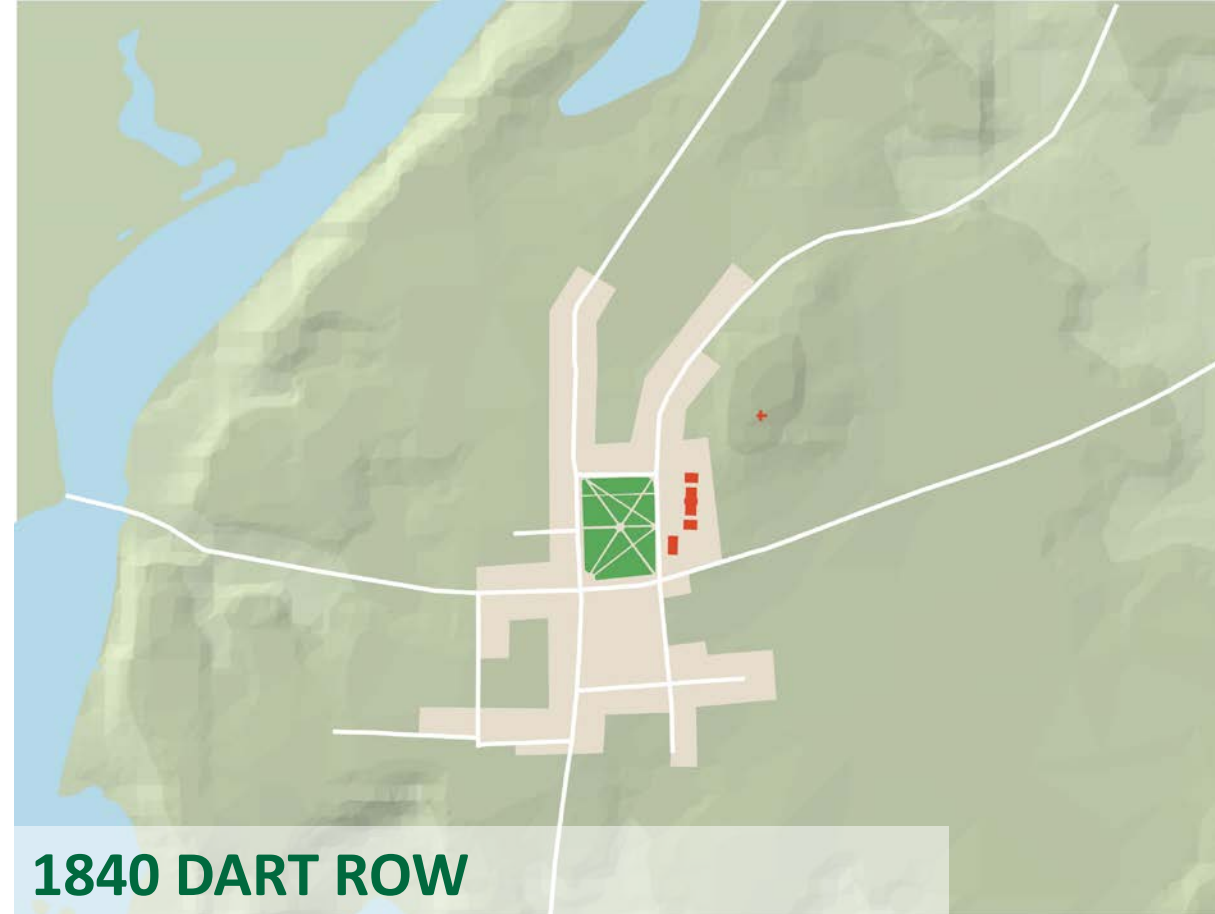
Vail
Remsen



Life Sciences Center

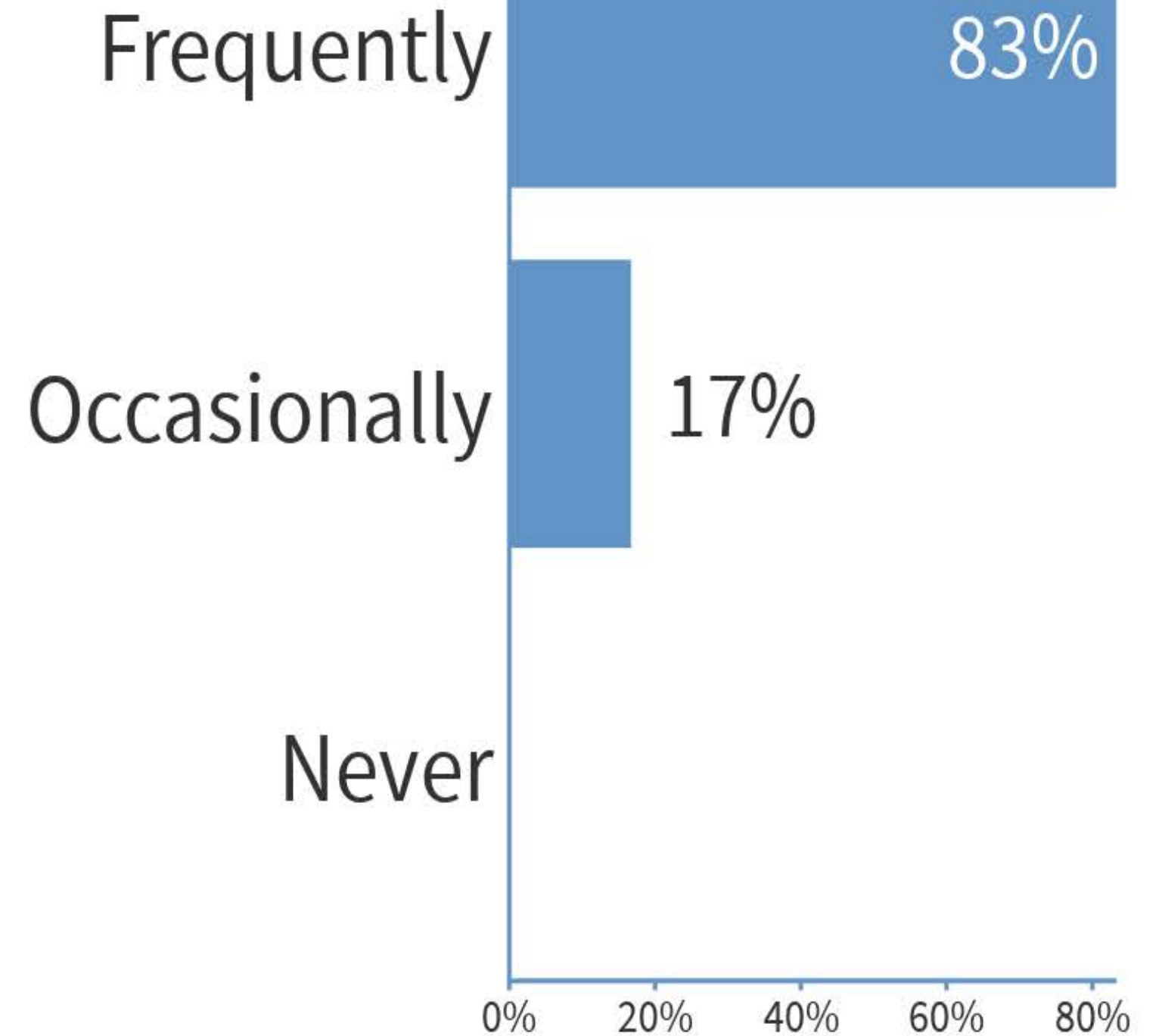


CURRENT CAMPUS PROJECTS



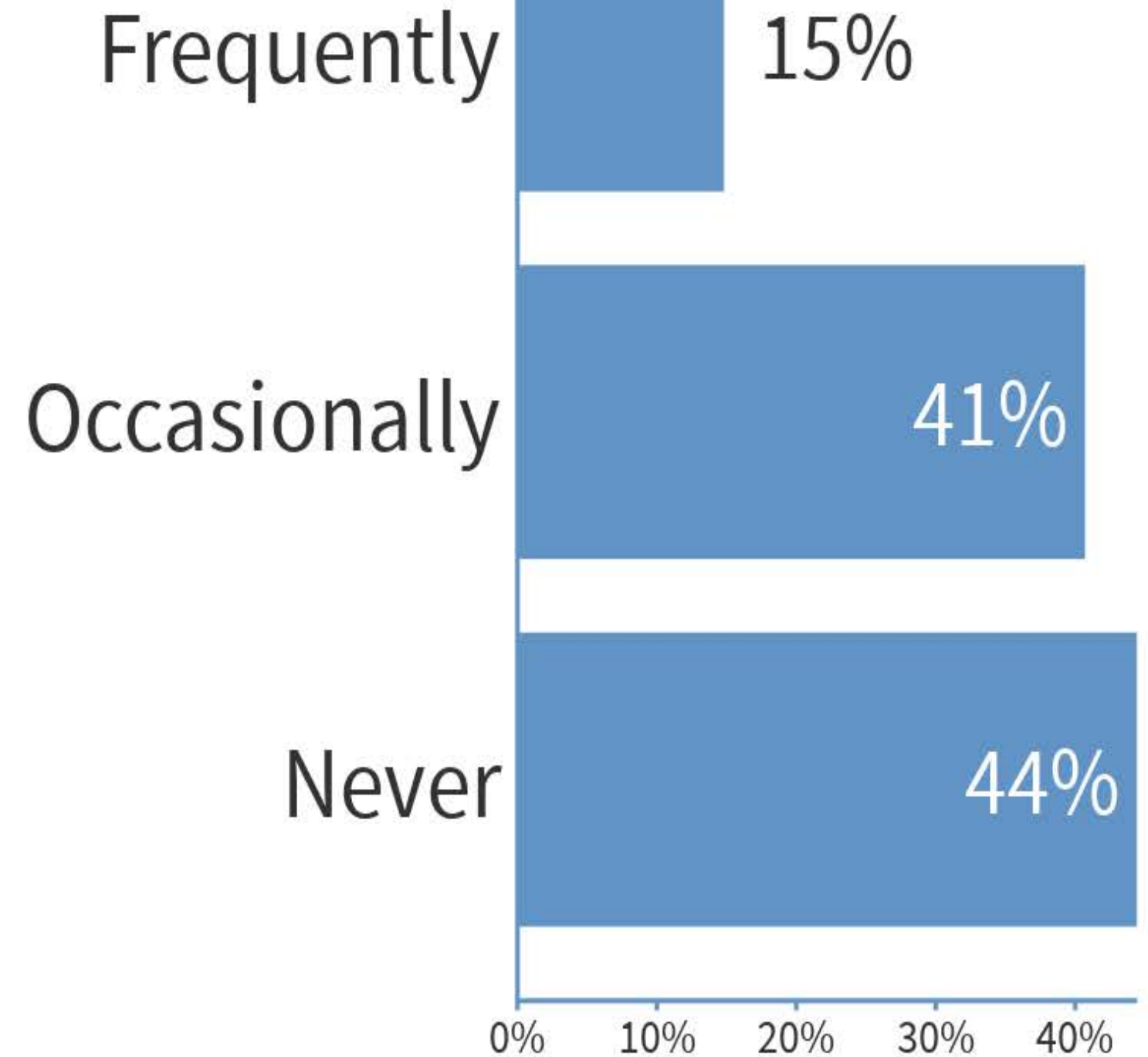
CAMPUS EVOLUTION

How often do you visit the Green?



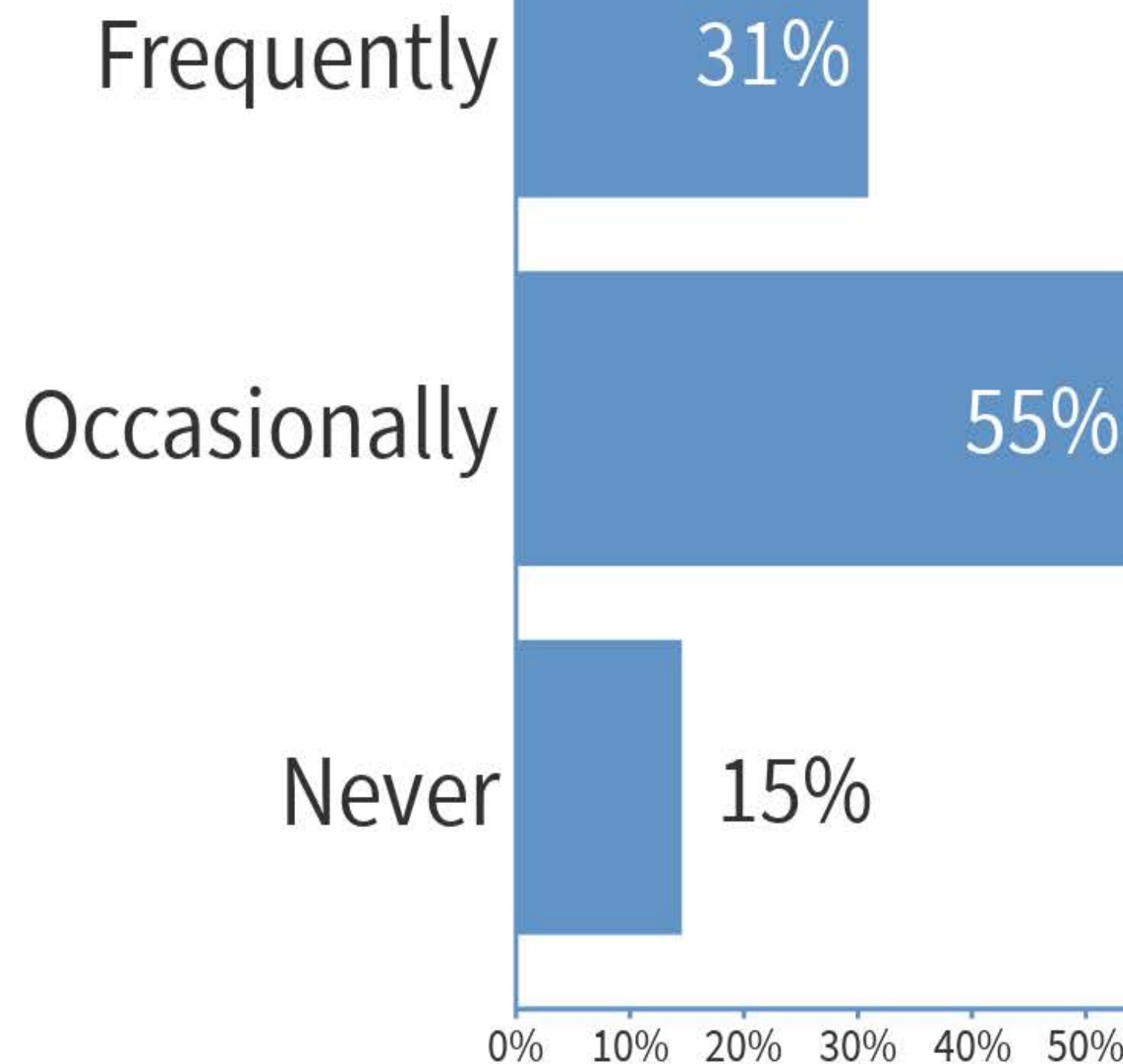
Total results: 54

How often do you visit the BEMA/College Park?



Total results: 54

How often do you visit the Riverfront/Connecticut River?

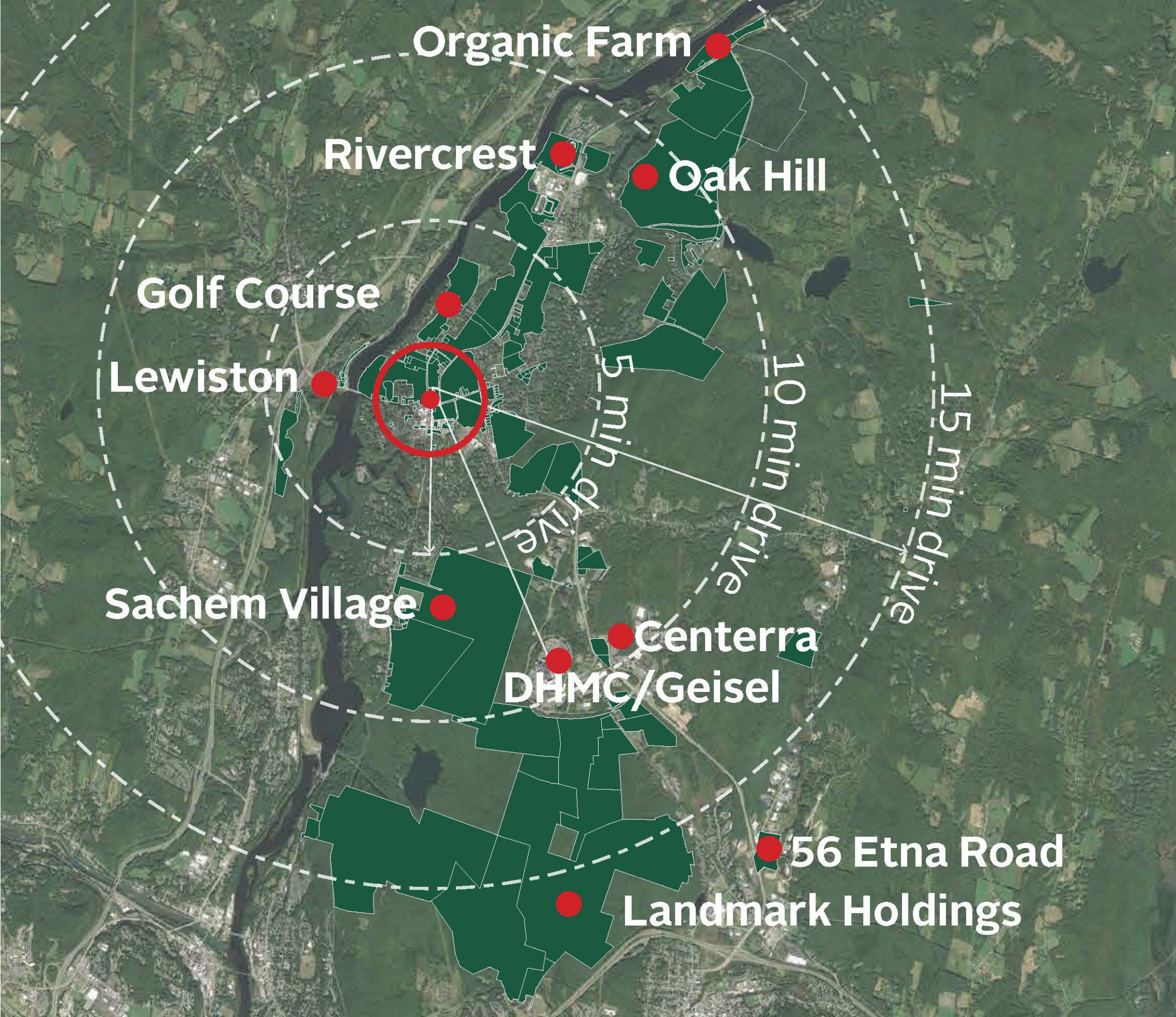


Total results: 55



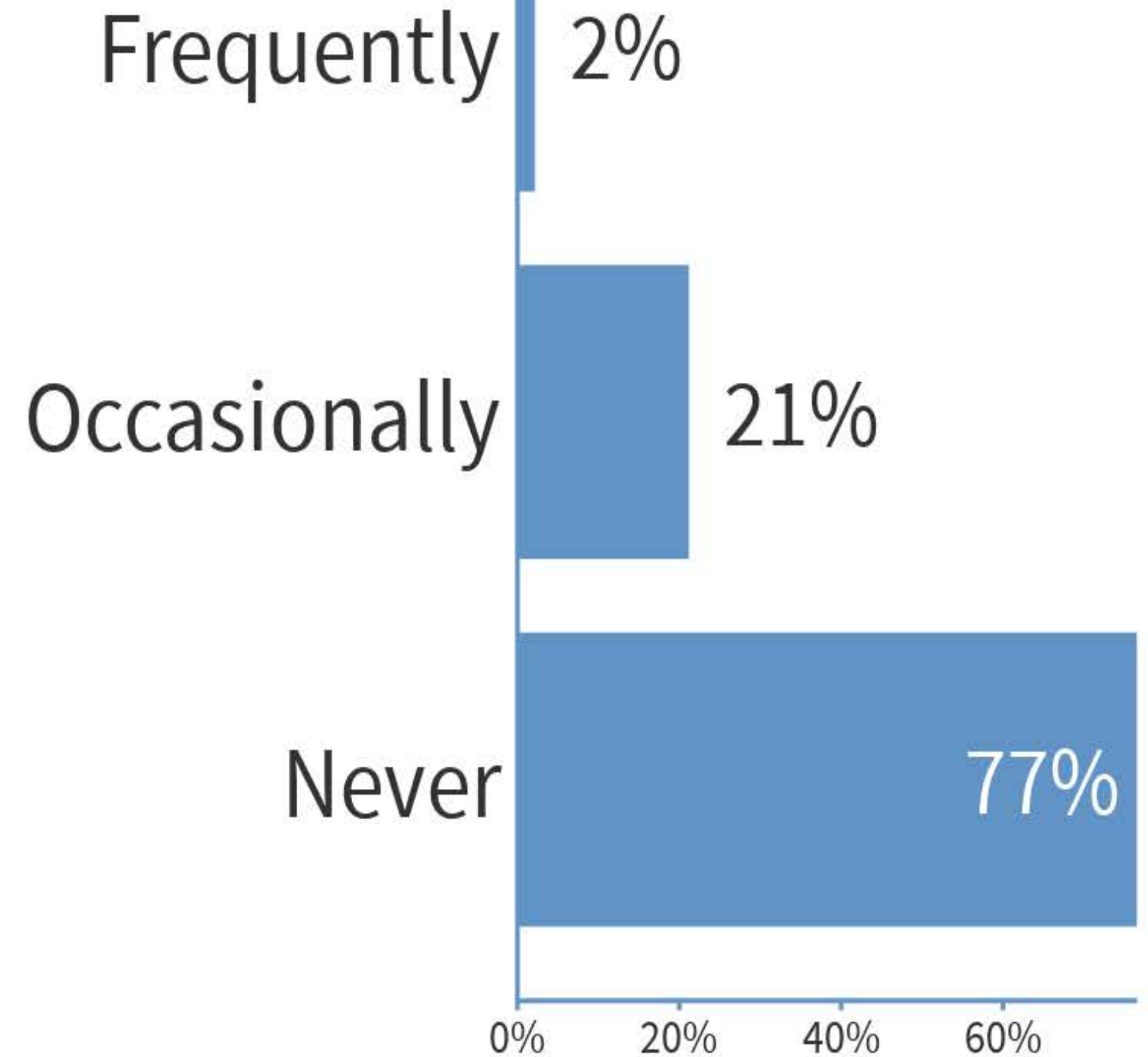
TOPOGRAPHY

Exploring how this plan can identify the strategic value of Dartmouth holdings

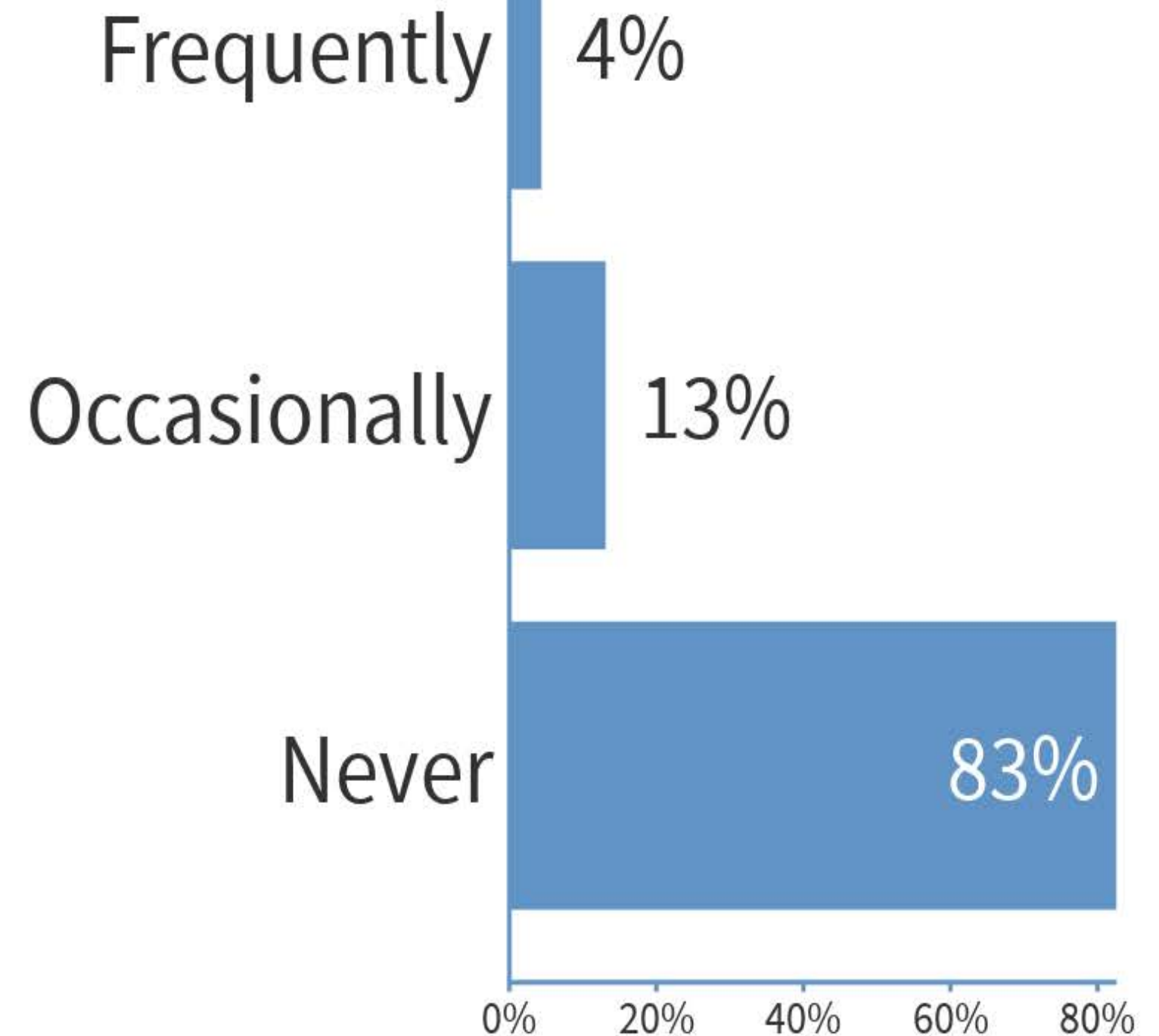


MAIN CAMPUS PROPERTIES

How often do you visit the Organic Farm?

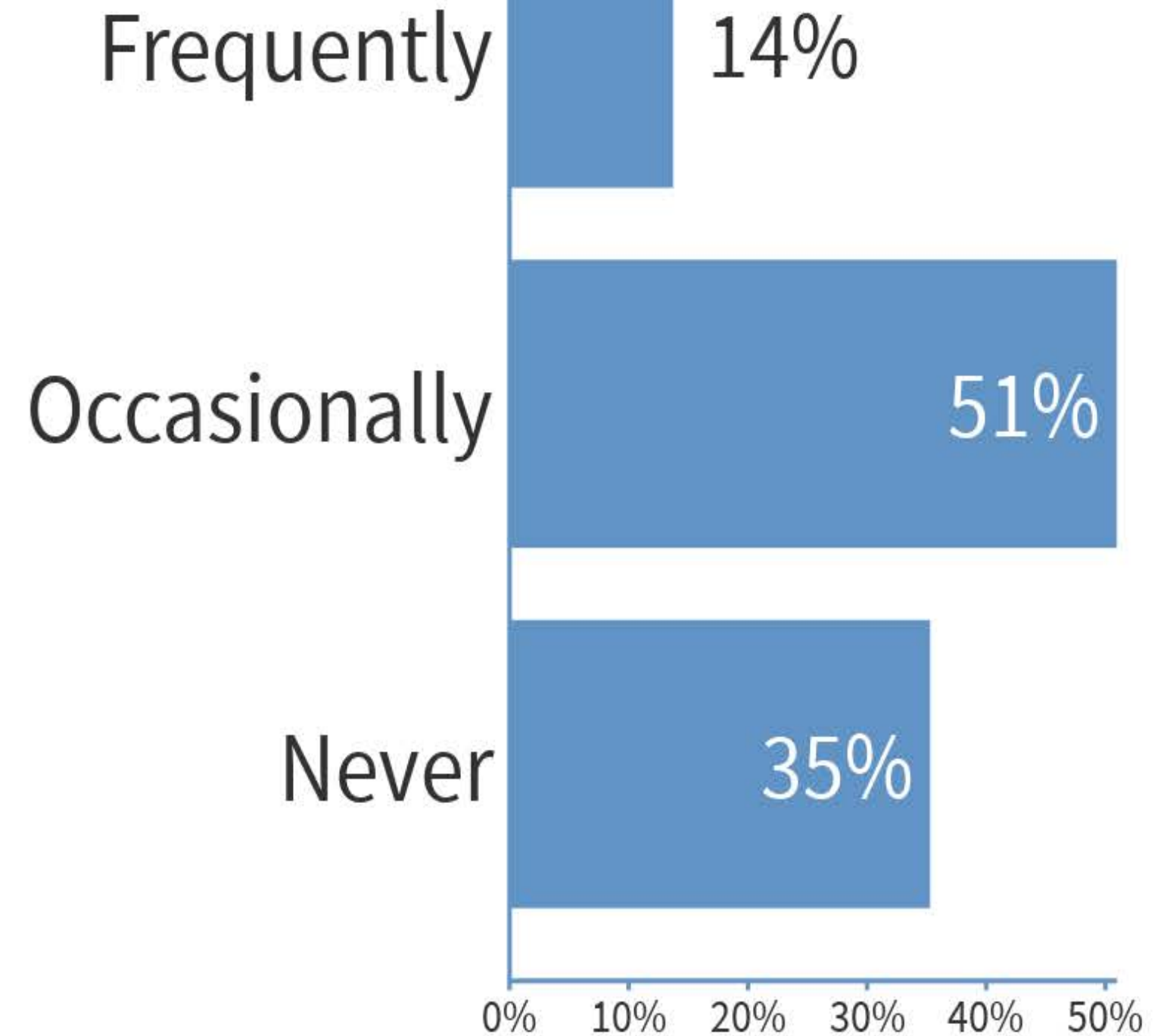


How often do you visit Oak Hill?

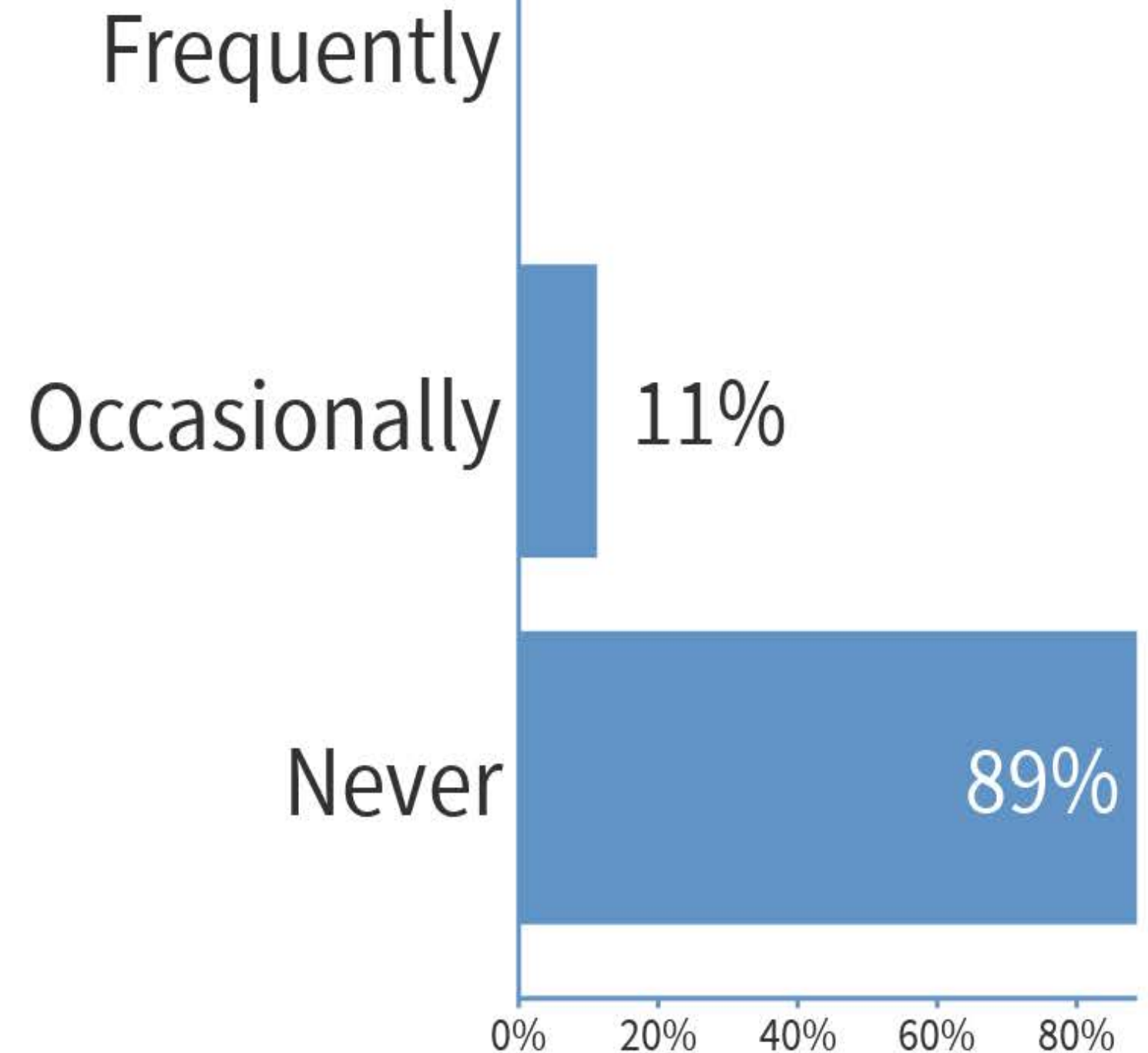


Total results: 46

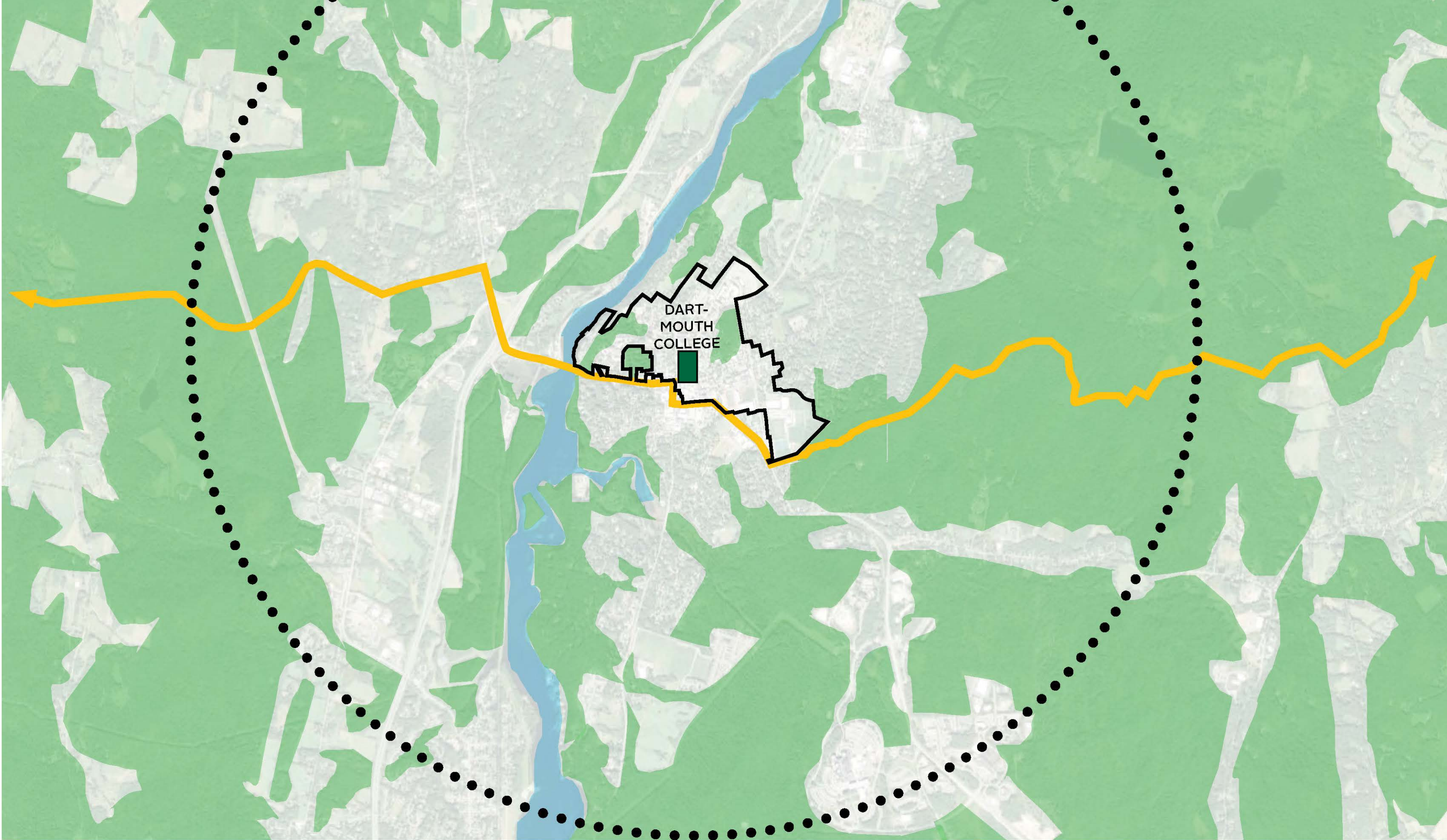
How often do you visit the Golf Course?



How often do you visit Landmark (aka Boston Lot Trails)?

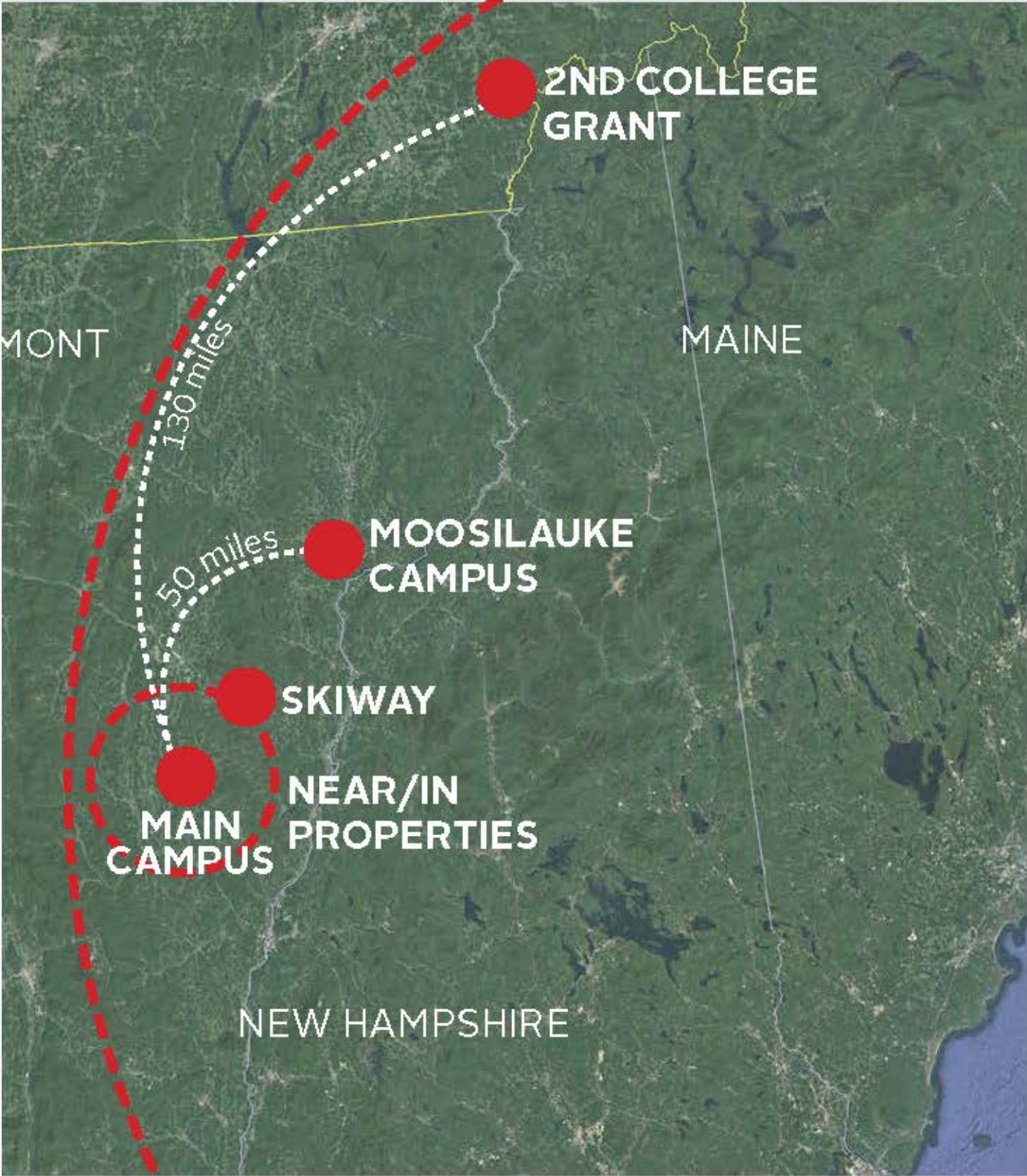
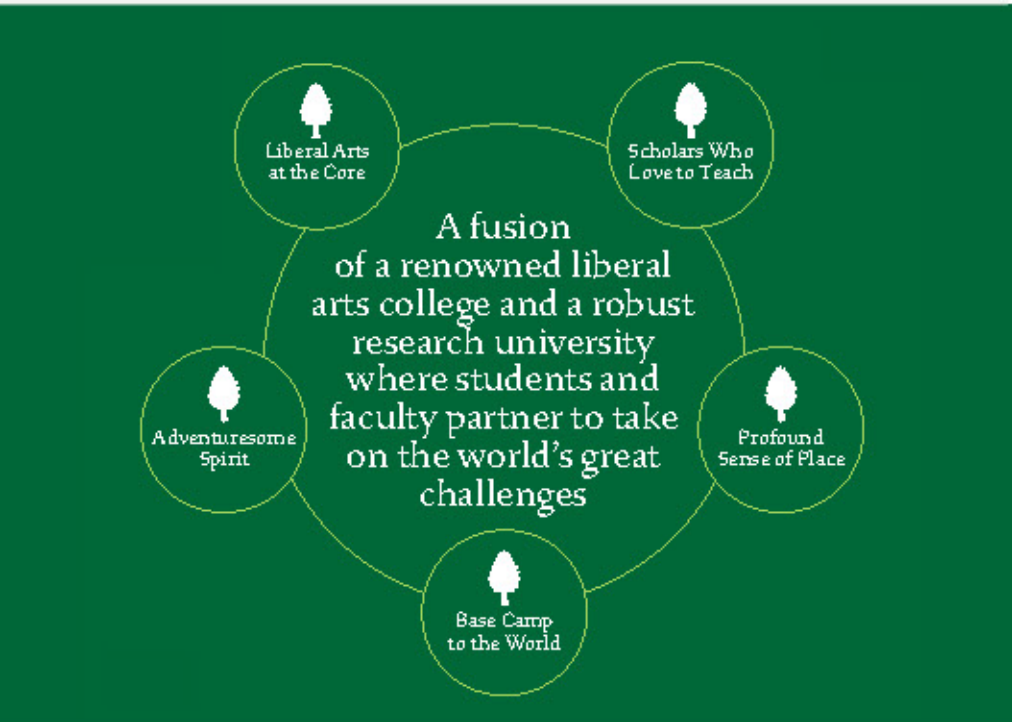


Total results: 53



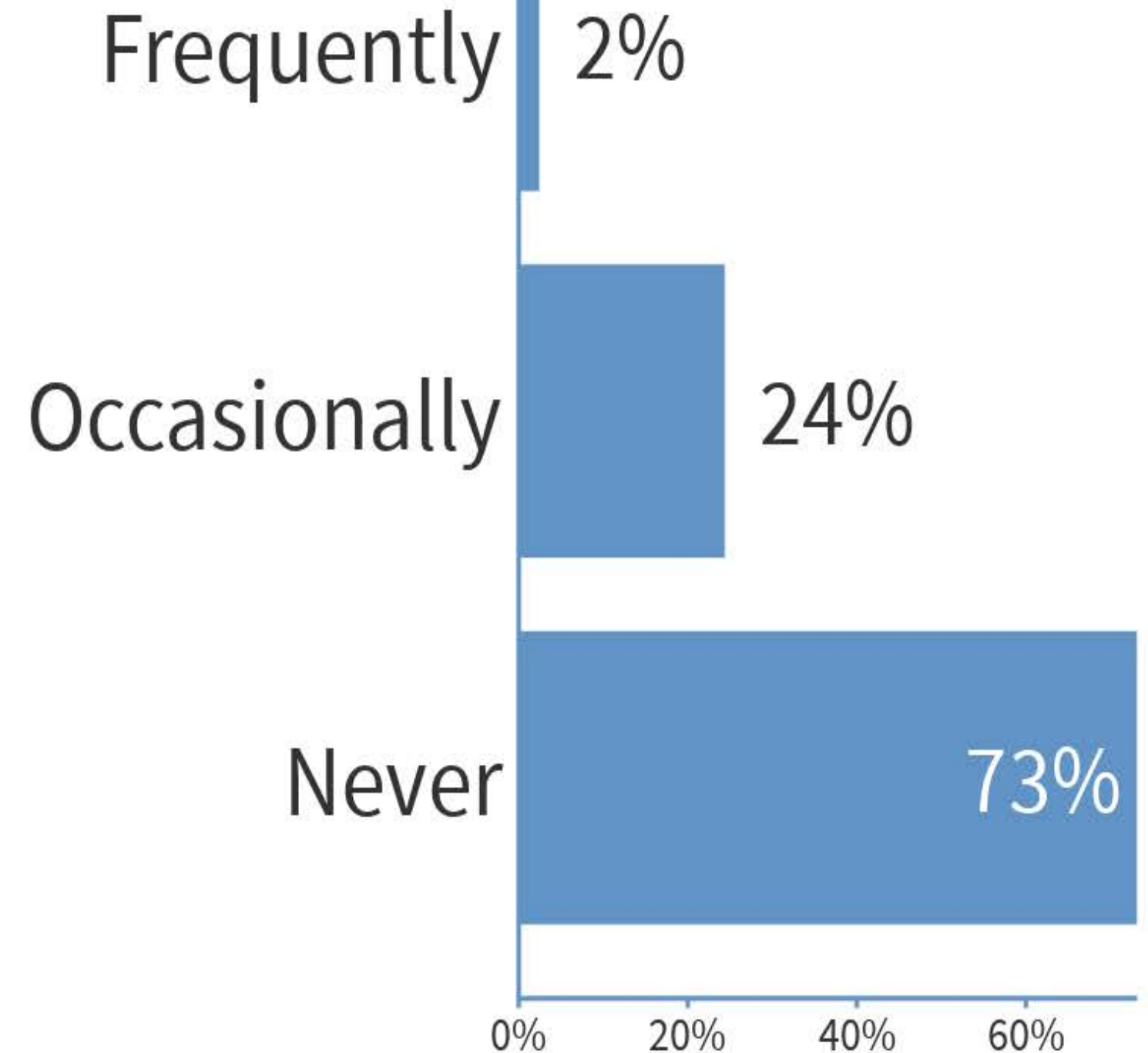
CONNECTING TO THE WIDER ENVIRONMENT

BASE CAMP TO THE WORLD

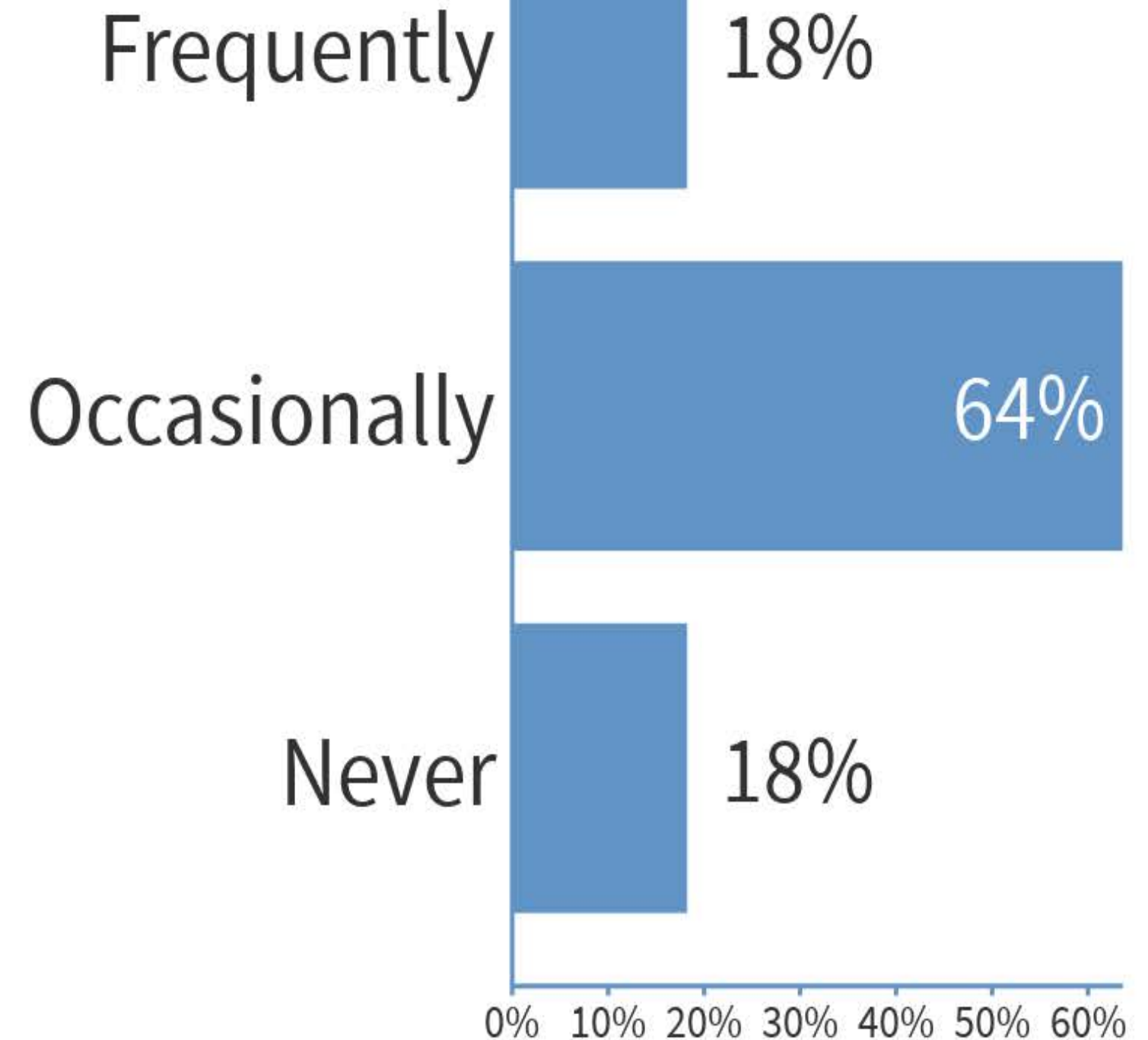


THE DARTMOUTH PRESENCE

How often do you visit the 2nd College Grant?

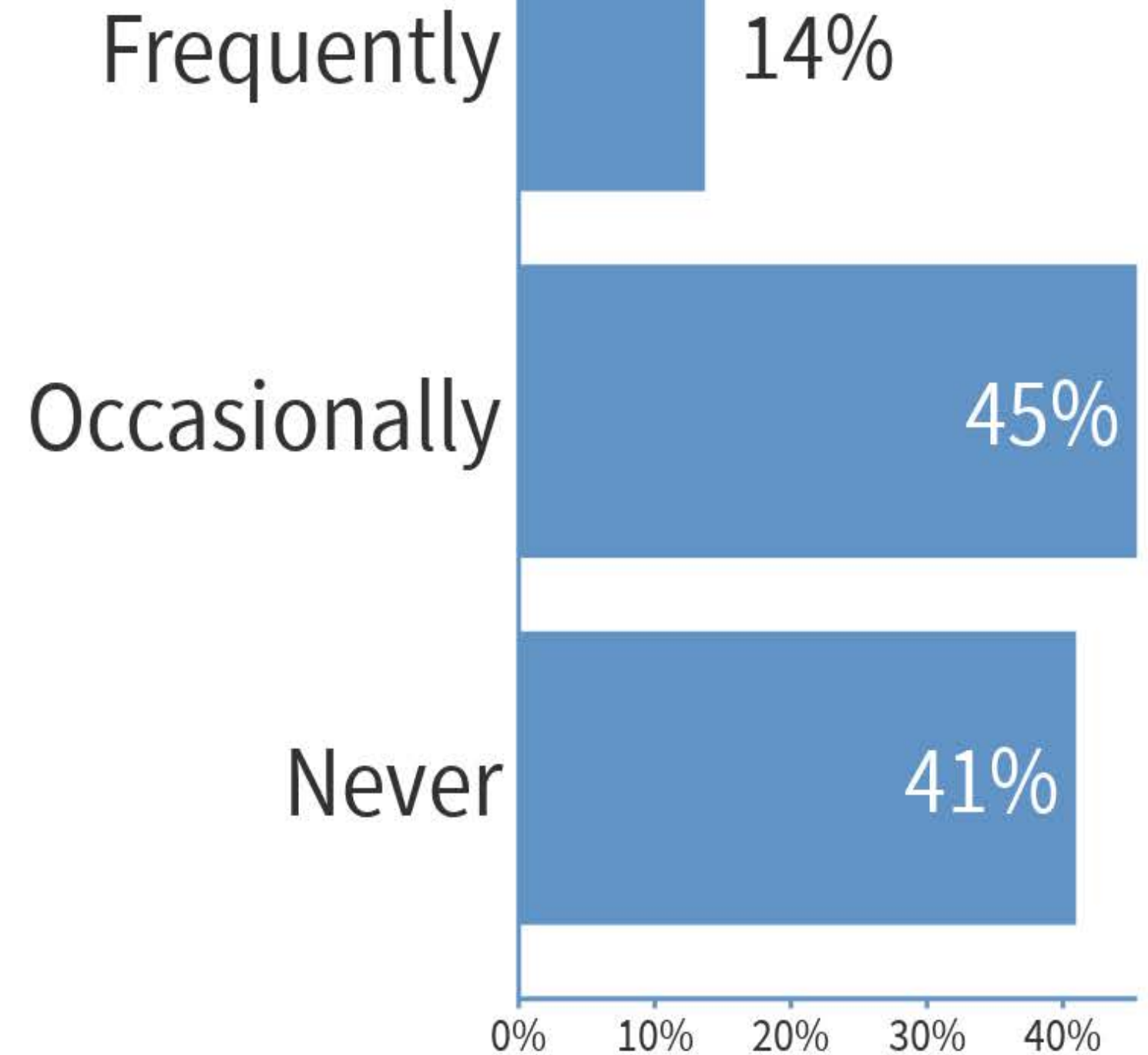


How often do you visit Moosilauke?



Total results: 44

How often do you visit Dartmouth Skiway?



NEXT STEPS

- **Continue to Solicit Input (www.dartmouth.edu/~masterplan/)**
- **Complete Data Collection**
- **Conduct Site, Property, & Building Analysis**
- **Develop Draft Principles**



What are the most important issues or themes that the Strategic Master Planning process needs to address?

- “Sustainability”
- “Transportation system. Not cars ”
- “Take better advantage of Choates ”
- “Keeping Dartmouth Green! Maintain & protect Green space ”
- “MASTERPLAN ”
- “DMASTERPLAN ”
- “Monorail ”
- “No more lodge housing ”
- “State of Art living facilities ”
- “Cafes/mini gyms directly in housing communities ”
- “Georgian architecture ”
- “More warmcuts ”
- “Housing ”
- “Keeping the golf course ”
- “Sustainability”
- “Creating reasons for students to visit/experience all ends of campus ”
- “Sustainability”
- “Walkability”
- “Build a wall ”
- “Student housing ”
- “Safe interactive natural space ”
- “Fix Choates ”
- “StudentLife ”
- “Open space ”
- “Infrastructure ”
- “Ethnic diversity spaces ”
- “Access to the river cluster ”
- “Update all residence halls ”
- “Safe interactive natural space ”
- “Georgian buildings ”
- “Flexible inclusive social spaces ”
- “Alternative living spaces for students ”
- “Bucolic ”
- “safe spaces for students of color ”
- “Beauty ”
- “Renovating dorms ”
- “Connection with nature ”
- “Update dirnd ”
- “Open spaces ”
- “Sustainability, climate change related issues- becoming carbon neutral, increasing electrical capacity”
- “Collaborative space ”
- “Walkability”
- “Raze the river cluster ”
- “On-campus vs. off-campus use ”
- “Preservation of green space. ”
- “Move Tuck to Lebanon, add their space to undergrad program ”
- “Preserve "look and feel" ”
- “Bicycle trails ”
- “Housing ”
- “Open space ”
- “Housing ”
- “Downtown renaissance ”
- “an architural vision/language ”
- “Interconnectivity”
- “nature ”
- “Better dorms ”
- “Open Space ”