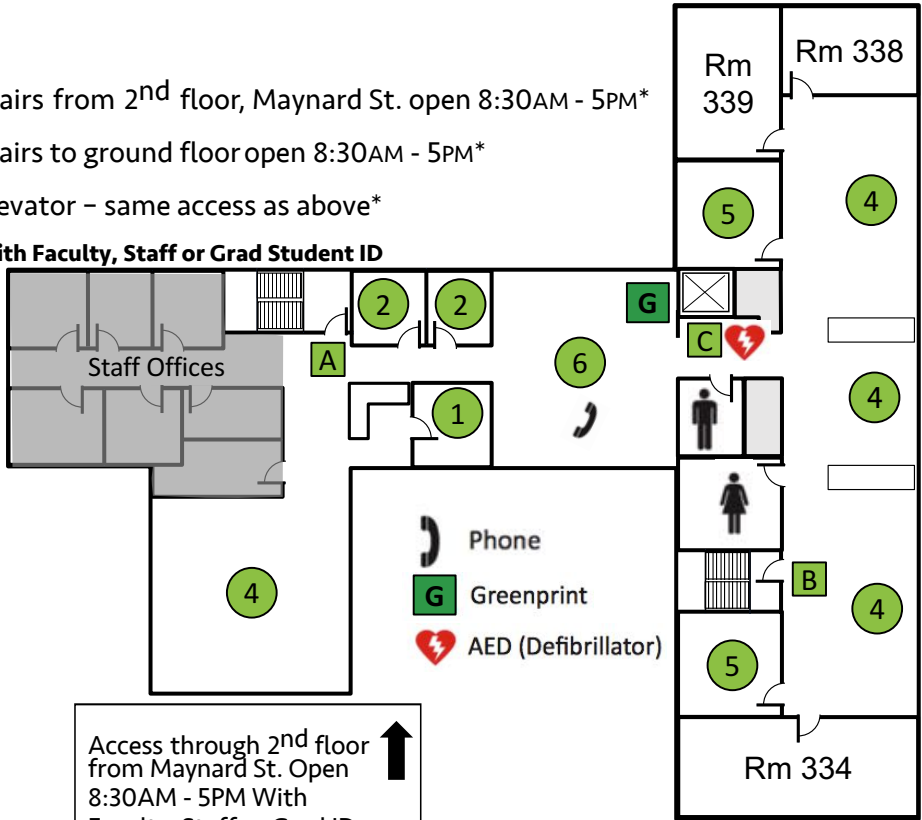


Dana Biomedical Library

3rd Floor 37 Dewey Field Road

- A** Stairs from 2nd floor, Maynard St. open 8:30AM - 5PM*
- B** Stairs to ground floor open 8:30AM - 5PM*
- C** Elevator - same access as above*

With Faculty, Staff or Grad Student ID



- | | |
|-------------------------------|-----------------------|
| 1 Information Services | 4 Study areas |
| 2 Reference Librarians | 5 Carrel rooms |
| 3 Onsite ollections | 6 Cafe |