

# Phantom QA Results: 32 CH

**Date:08/13/2018**

**Dartmouth Brain Imaging Center (DBIC)**

Measurement	Value	Comments
Signal-to-Noise Ratio (SNR)	216.1	
Signal-to-Fluctuation-Noise ratio (SFNR)	218.1	
Radius of Decorrelation (RDC) (fig 3)	7.5	
Drift (fig 1)	0.30	
Percent Fluctuation (fig 1)	0.06	
Fourier analysis of the residuals (fig 2)	<2	
Ghost Mean Percentage (fig 10)	2.48%	Better than the recommended level (3% < ) in ref 2:

Table 1: Key measurements

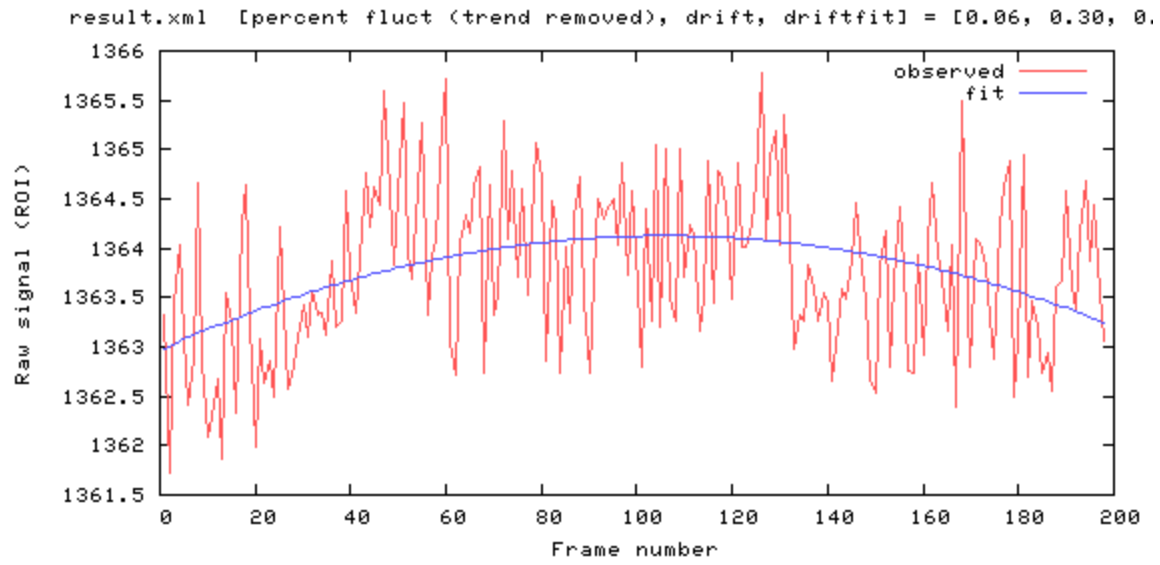


Figure 1

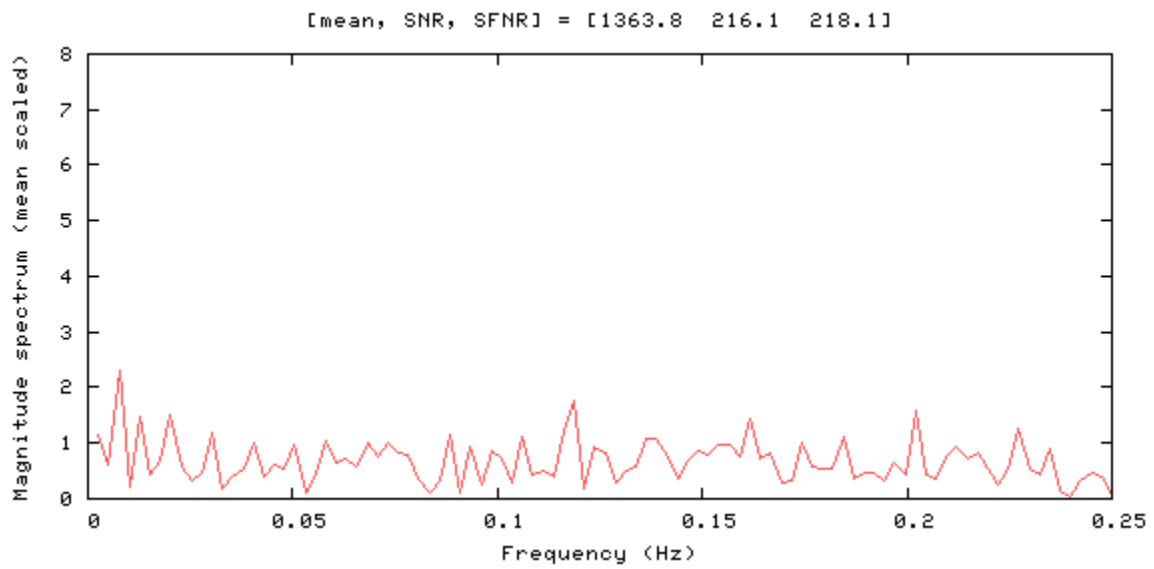


Figure 2

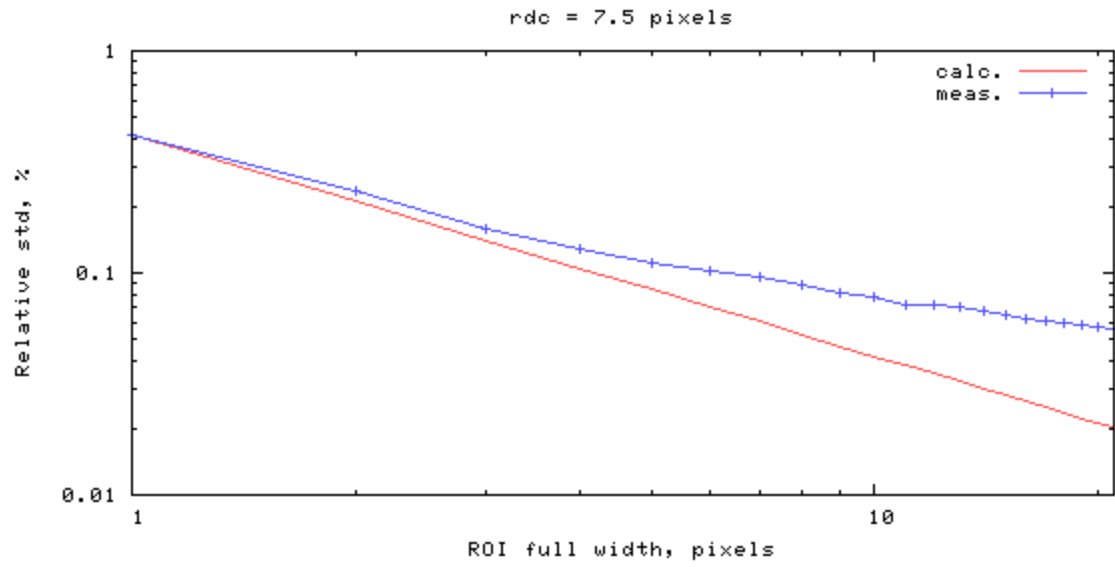


Figure 3

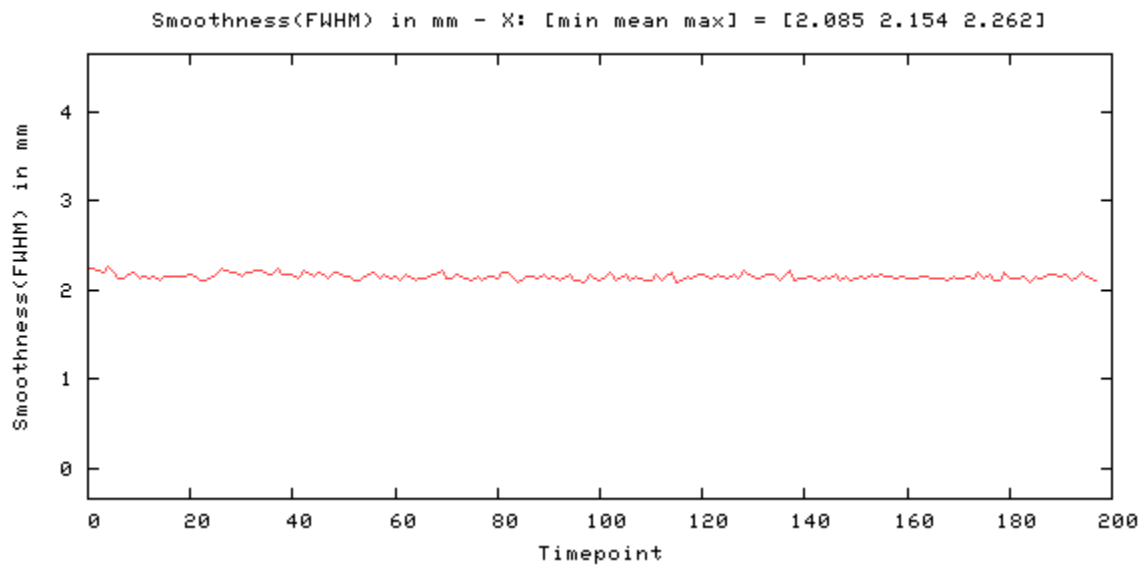


Figure 4

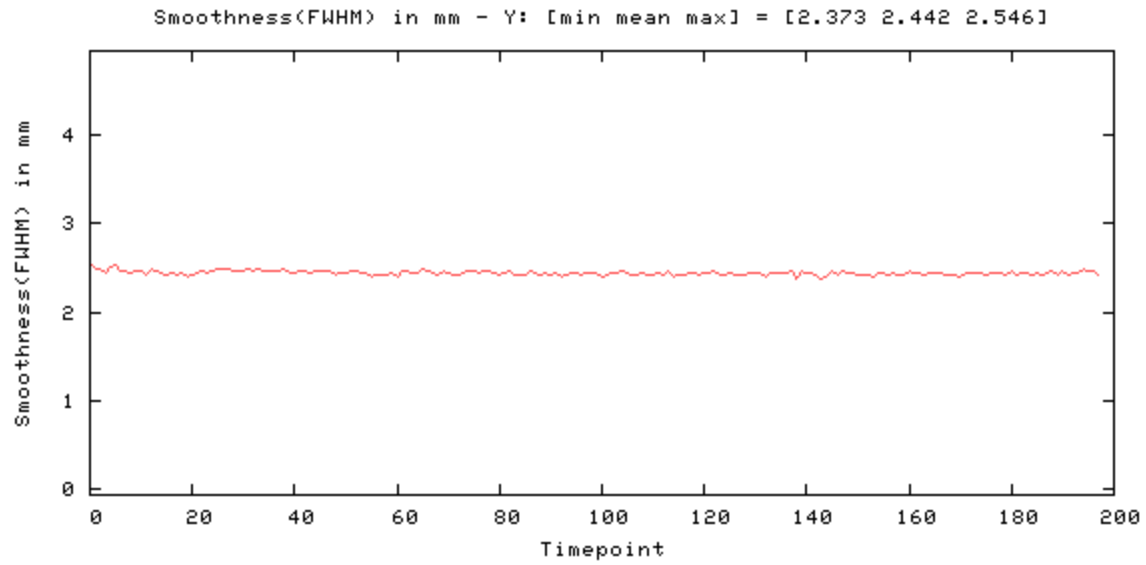


Figure 5

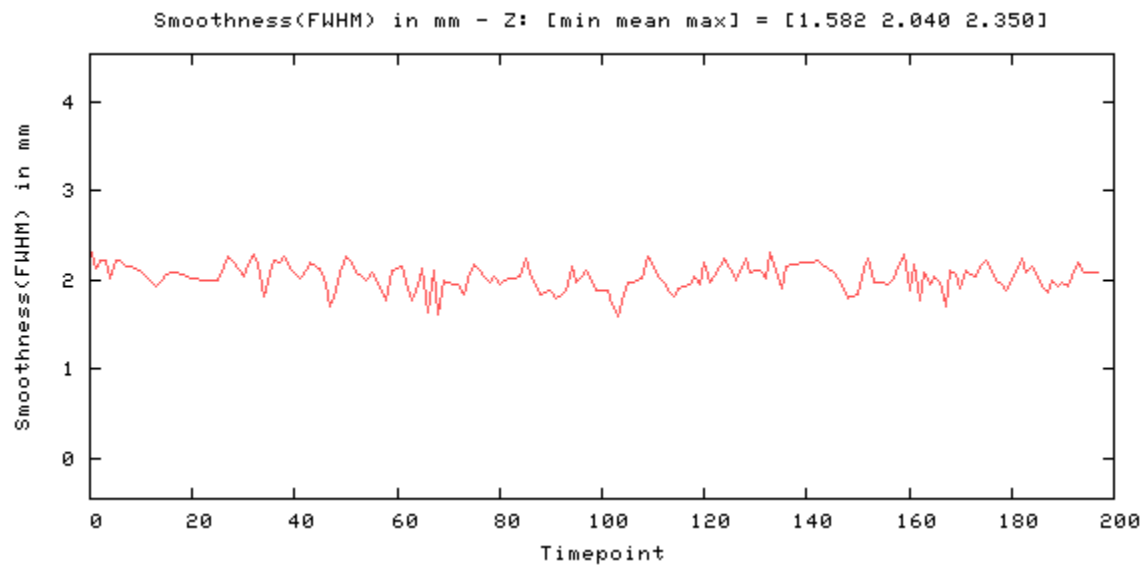


Figure 6

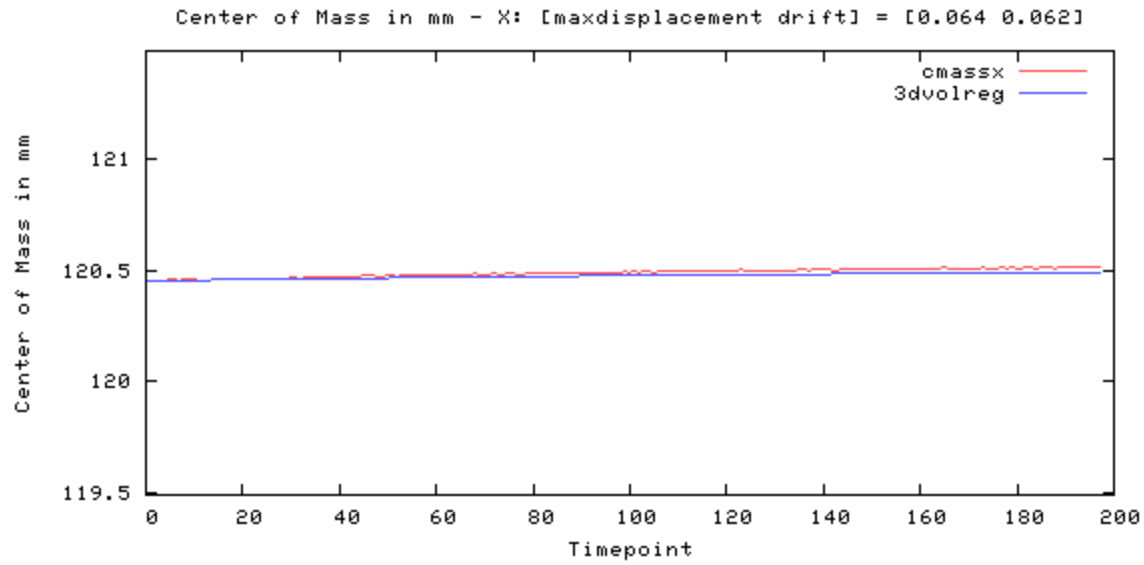


Figure 7

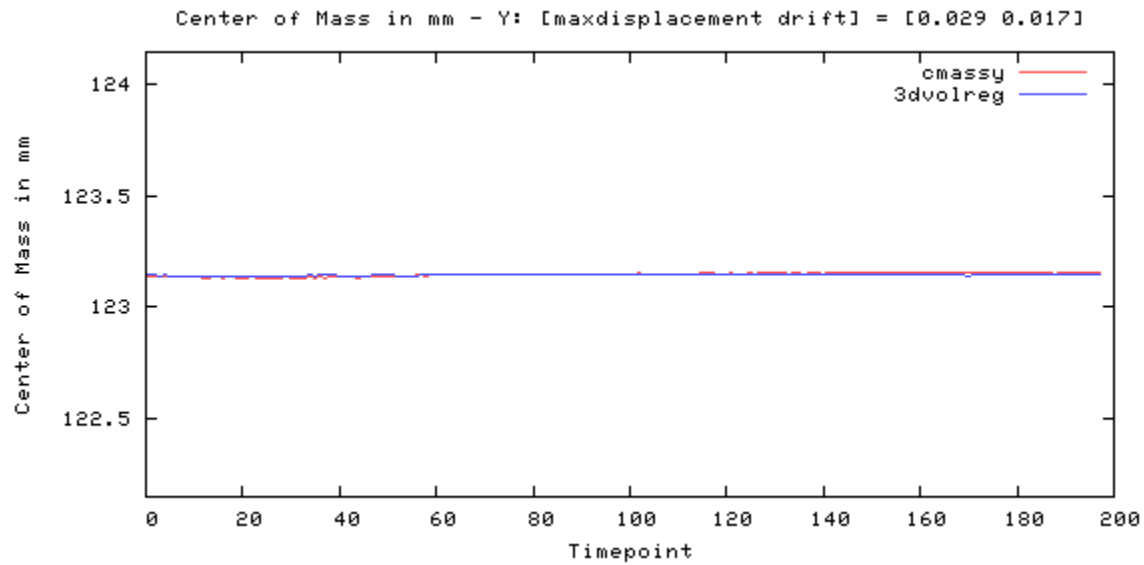


Figure 8

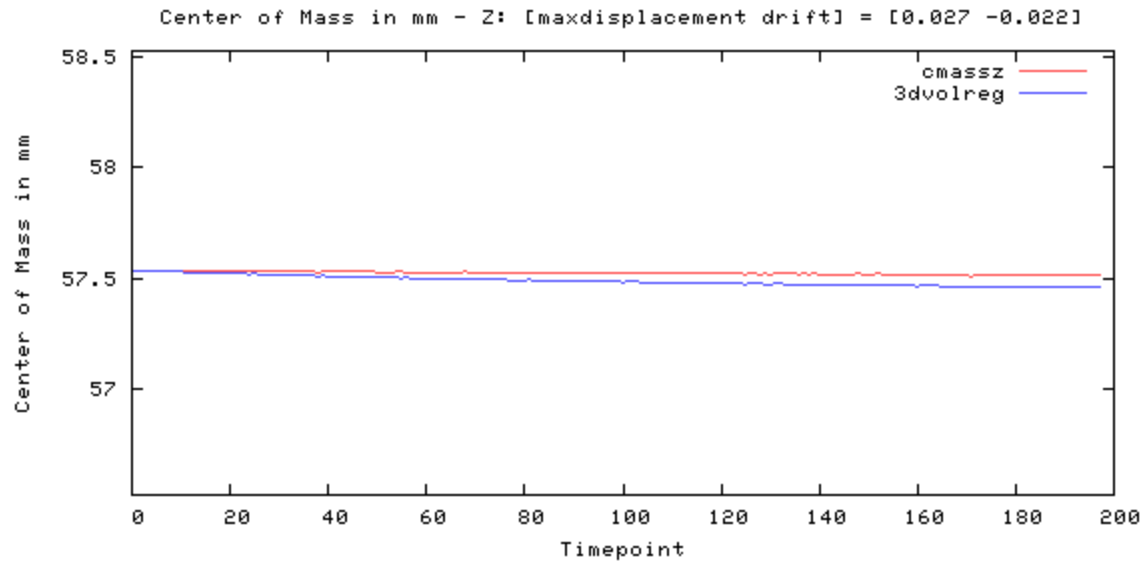


Figure 9

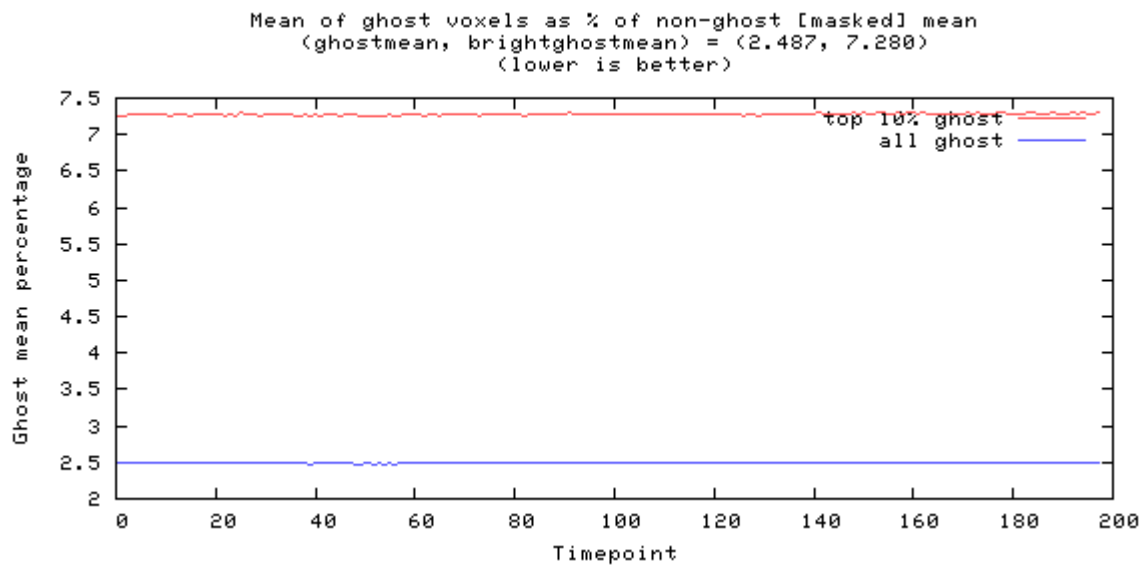


Figure 10

---

## Odd-even difference image



image min: -321, image max: 299

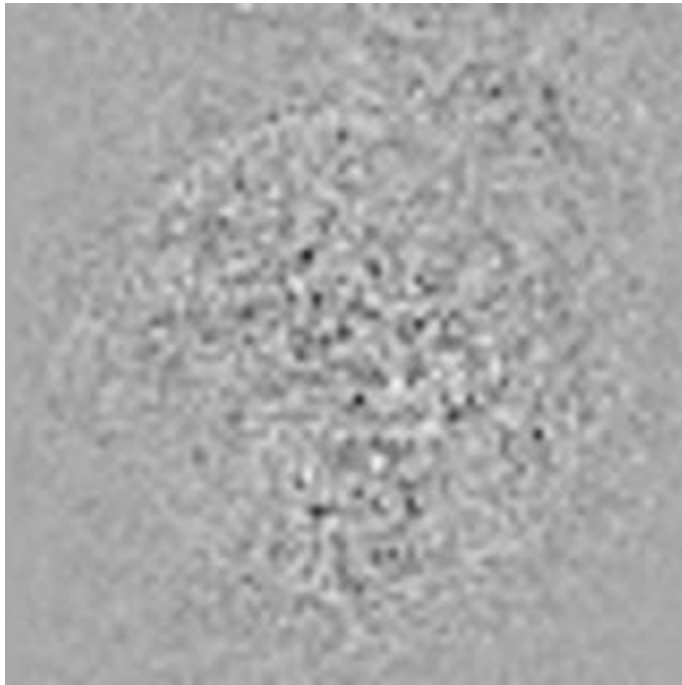


Figure 11

---

## Mean image



image min: 0, image max: 2226.12

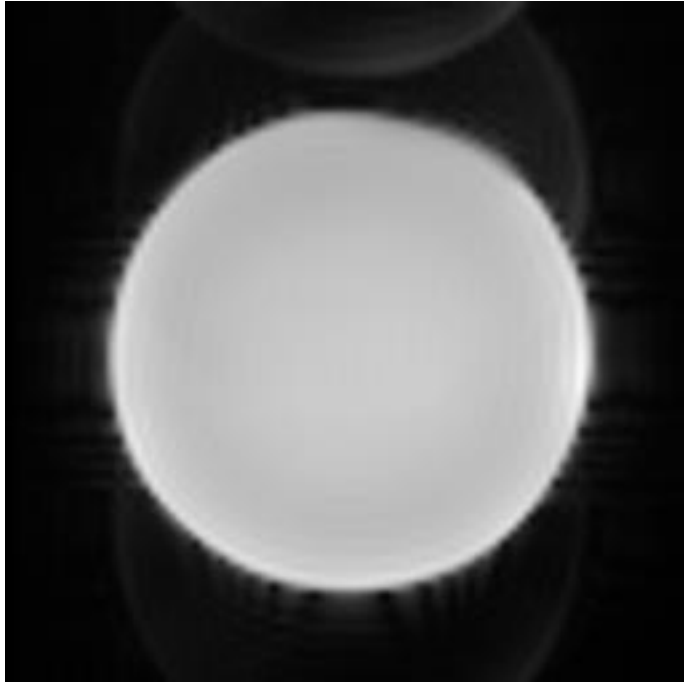


Figure 12



---

## Standard Deviation image



image min: 0, image max: 8.48088

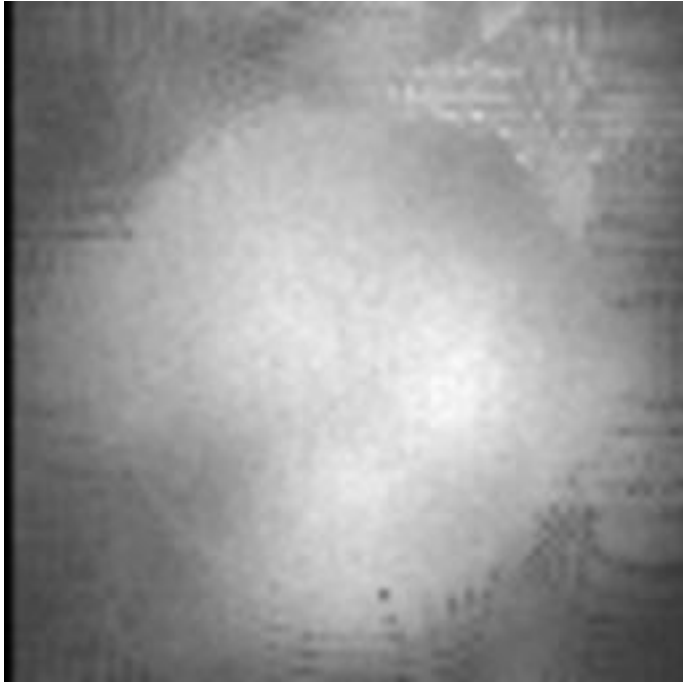


Figure 13

---

## SFNR image



image min: 0, image max: 876.259

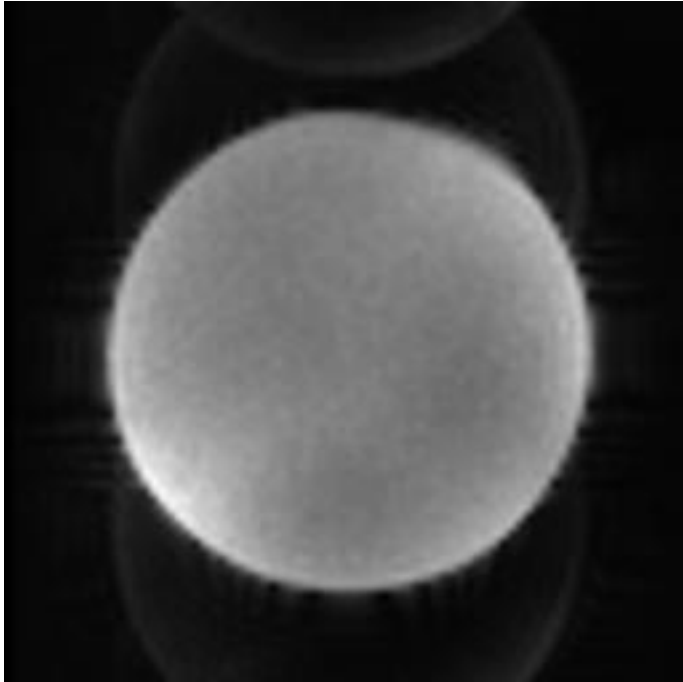


Figure 14

---

## Acquisition parameters

dimensions	80x80x30x200
spacing	3mmx3mmx3.99mmx2000ms
gap	0mmx0mmx0.49mmx0ms
scanner	AWP66112
psdname	%SiemensSeq%\ep2d_bold
examnumber	61
studyid	qa
seriesnumber	5
runnumber	1
scanningsequence	EP
sequencevariant	SK
magneticfield	3
description	func-bold_task-rest_acq-p2
scandate	2018-08-13
scantime	09:21:42
tr	2000
te	35.000000
flipangle	90
prescribedslicespacing	3.99
frequencydirection	1
acquisitionmatrix	80 80
bandwidth	185.2
transmitcoilname	Body
institution	Dartmouth College - PBS
examdescription	dbic^QA
scanner	AWP66112
scannermanufacturer	SIEMENS
scannermodelname	Prisma
fieldofview	240 240
psdname	%SiemensSeq%\ep2d_bold
protocolname	func-bold_task-rest_acq-p2 (func-bold_task-rest_acq-p2)

institutionaddress	Maynard 3,Hanover,NH,US,03755
institutionaldepartment name	Department
scanoptions	FS
mracquistiontype	2D
sequencename	*epfid2d1_80
angioflag	N
numaverages	1
imagingfrequency	123.252474
imagednucleus	1H
spacingbetweenslices	3.9900000274011
numphaseencodingsteps	79
echotrainlength	39
percentsampling	100
percentphasefieldofview	100
scannerserialnumber	66112
softwareversions	syngo MR E11
inplanephaseencoding direction	COL
variableflipangleflag	N
sar	0.05543275186451
dBdt	0
acquisitionnumber	1
instancenumber	1
samplesperpixel	1
photometricinterpretation	MONOCHROME2
rows	480
columns	480
bitsallocated	16
bitsstored	12
highbit	11
pixelbandwidth	2315
otherinfo	

sliceorder	2,4,6,8,10,12,14,16,18,20,22,24,26,28,30,1,3,5,7,9,11,13,15,17,19,21,23,25,27,29
------------	--

References:

1. Friedman L, Glover GH. Report on a multicenter fMRI quality assurance protocol. *J Magn Reson Imaging*. 2006a; 23(6):827–839. [PubMed: 16649196]
2. Acceptance Testing and Quality Assurance Procedures for Magnetic Resonance Imaging Facilities, AAPM Report No. 100
3. [https://www.nitrc.org/projects/bxh\\_xcede\\_tools](https://www.nitrc.org/projects/bxh_xcede_tools)