

# C-MERC

Coastal and Marine Mercury Ecosystem Research Collaborative

July 23, 2011 - Workshop 2  
Halifax, Nova Scotia



Dartmouth Toxic Metals Superfund Research Program

## What is C-MERC?

Despite the significant connection between the bioaccumulation of mercury in marine food webs and dietary consumption of fish by humans, many important gaps exist in our understanding of the sources of methylmercury in marine systems and the pathways to human exposure. The Coastal and Marine Mercury Ecosystem Research Collaborative (C-MERC), sponsored by the Dartmouth College Toxic Metals Superfund Research Program, is working to address these important questions. Guided by a steering committee and support staff, C-MERC has convened a team of scientists and stakeholders to work together over a two-year period to gather and analyze data to publish papers which will elucidate key processes related to the inputs, cycling and uptake of mercury in marine ecosystems. The salient findings from this initiative will be translated and distributed to public health and policy stakeholders.

## C-MERC Goals:

- 1) To develop a network of scientists who study the distribution and controls of mercury in water, sediment, and the food web (including humans) in marine systems.
- 2) To facilitate communication between stakeholders and scientists about the important mercury questions relevant to environmental health policy.
- 3) To provide a forum for mercury scientists to communicate their results with other investigators and facilitate the exchange of information between environmental geochemists, biologists, ecotoxicologists, and epidemiologists.
- 4) To identify key questions about mercury in marine systems and exposure to humans via seafood consumption to facilitate the analysis of existing data to address those questions.

## The C-MERC Workshops

Two inter-related, invitational workshops (the first of which was held in Portsmouth, NH September 8-10, 2010 and the next in Halifax, NS on July 23, 2011) allow researchers and policymakers to gather and synthesize knowledge about mercury in marine systems, focusing on seven ocean systems and a range of emerging global mercury topics. These meetings are working, roll-up-the-sleeves sessions, not research seminars. Scientists involved with mercury deposition, biogeochemical cycling, trophic transfer, ecotoxicology, and human health related research are connecting with policy stakeholders from EPA, NOAA, FDA, industry and NGOs to examine the implications for human exposure, public health and related issues pertaining to national and global mercury policy.



C-MERC participants Workshop 1, Portsmouth, NH September 2010

## C-MERC Special Session at ICMGP

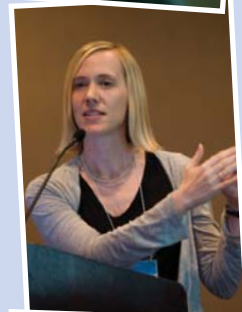
Wednesday July 27, 2011

“Mercury fate in marine ecosystems: from sources to consumers”



### C-MERC Connections

C-MERC will produce a series of papers that identify the gaps in knowledge relating to mercury in the marine environment. In addition, researchers are charged with addressing relevant policy questions in each paper and discussing the links to human health issues. By making these connections, C-MERC is considering the issue of mercury as a global contaminant holistically, while creating a larger network of scientists, stakeholders, regulators and policymakers from diverse backgrounds who are working towards a common goal.



### What's in Store?

The C-MERC workshops have helped stimulate mercury research and given focus and collaborative goals to the wide range of professionals involved in carrying them out. C-MERC products will include: Papers published in two scientific journals; a lay report that distills findings for non-scientists; production of a supporting website for the report, scientific papers and additional content; development of a stakeholder database for distribution of the report; a comprehensive media roll-out to release major findings, and production of an educational video for lay audiences and stakeholders.



Visit [www.c-merc.org](http://www.c-merc.org) for a list of C-MERC papers, workshop materials and related mercury information.

***The Dartmouth Toxic Metals Superfund Research Program conducts and translates research on hazardous substances in the environment and their impact on human health.***

Please visit our website at: <http://www.dartmouth.edu/~toxmetal>



This project is supported by NIH Grant number P42ES007373 from the National Institute of Environmental Health Sciences. The content is solely the responsibility of the authors and does not necessarily represent the official views of the National Institute of Environmental Health Sciences, or the National Institutes of Health.