

Dartmouth Brain Imaging Center (DBIC)

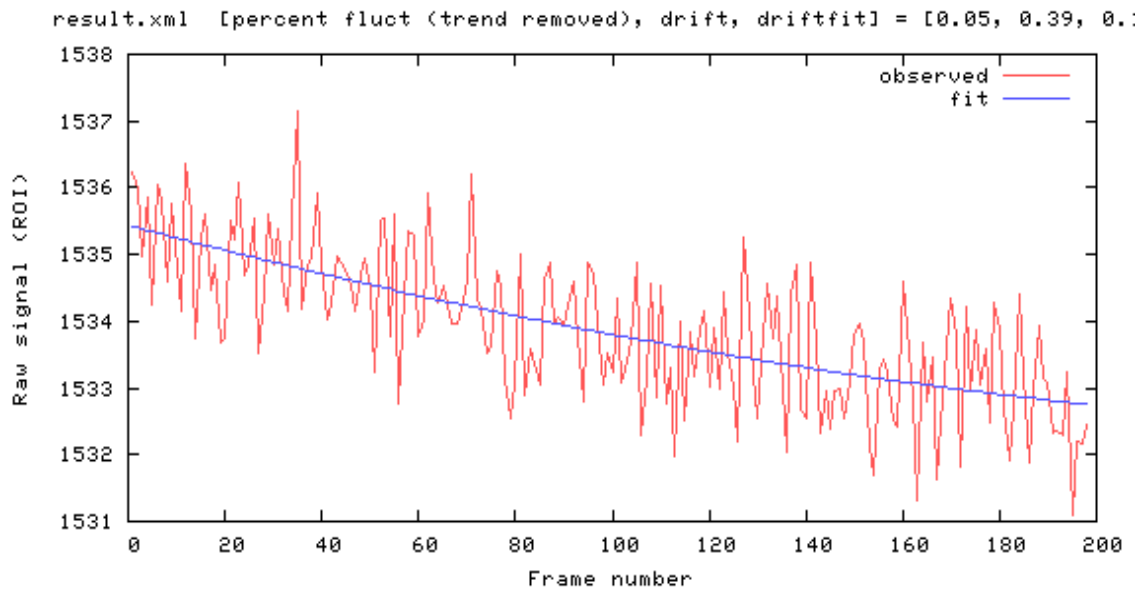
QA Report 32 CH

01222024

Measurements

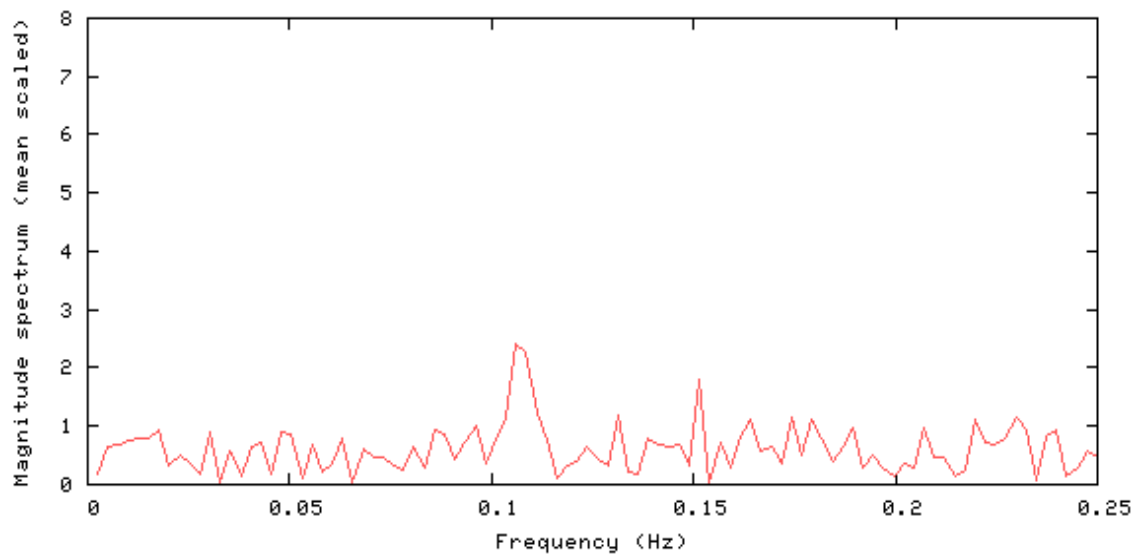
| Measurements | Value |
|------------------------------------|--------|
| mean signal (mean) | 1533.9 |
| Signal to Noise Ratio (SNR) | 256.3 |
| Signal to Fluctuation Ratio (SFNR) | 252.8 |
| Percent Fluctuation | 0.05 |
| Drift | 0.39 |
| Radius of Decorrelation (RDC) | 8.1 |
| Mean Ghost Percentage | 2.419 |
| Standard Deviation (std) | 0.81 |

Signal



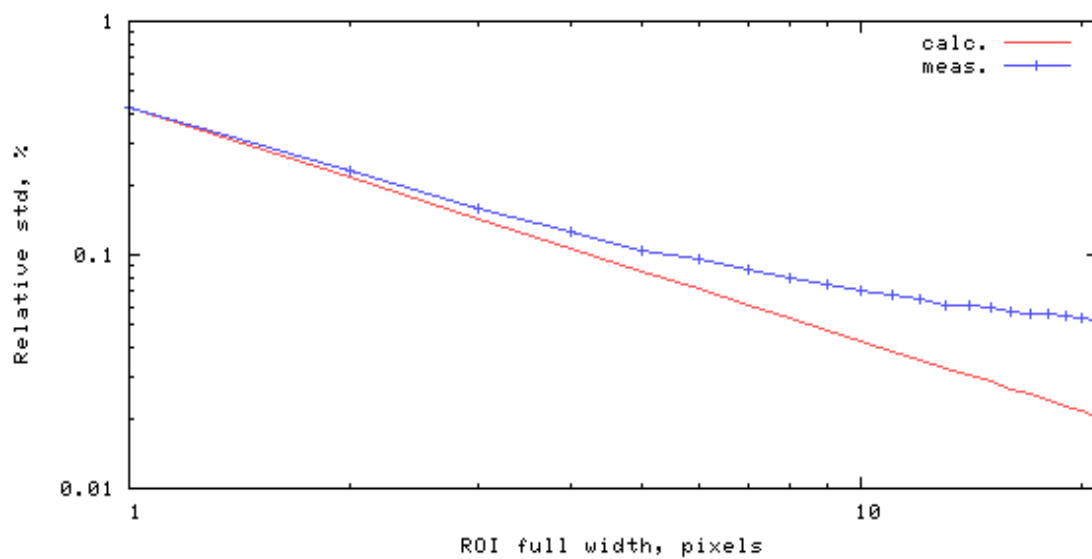
Frequency Spectrum

[mean, SNR, SFNR] = [1533.9 256.3 252.8]



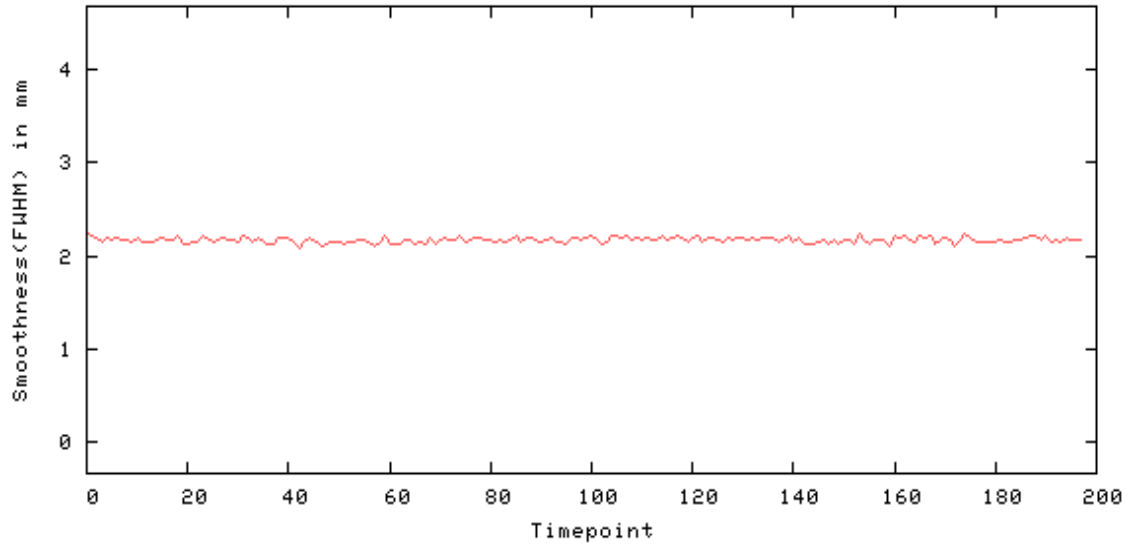
Radius of Decorrelation

rdc = 8.1 pixels



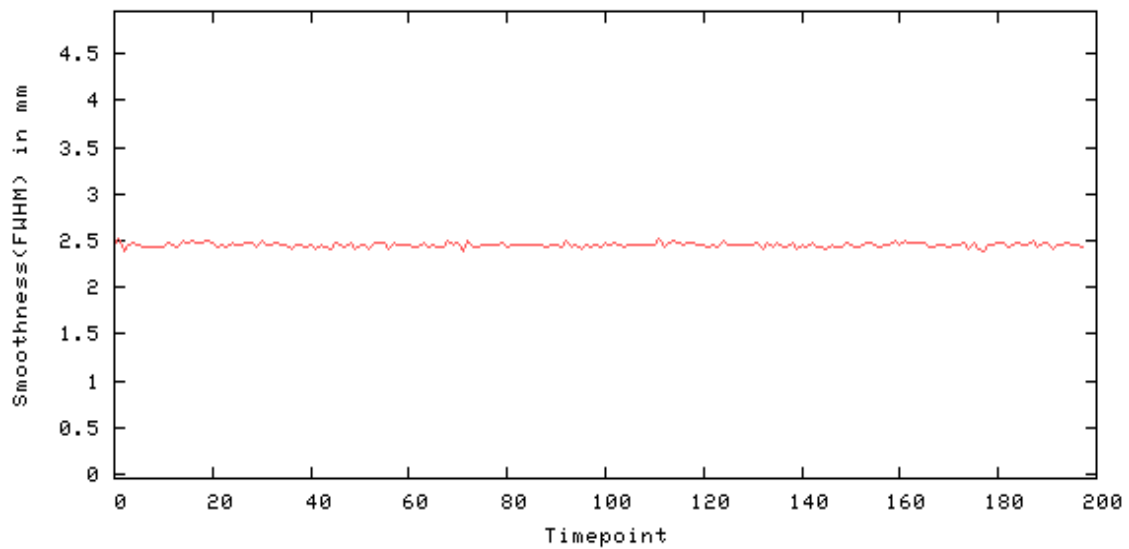
Smoothness - X

Smoothness(FWHM) in mm - X: [min mean max] = [2.080 2.169 2.238]



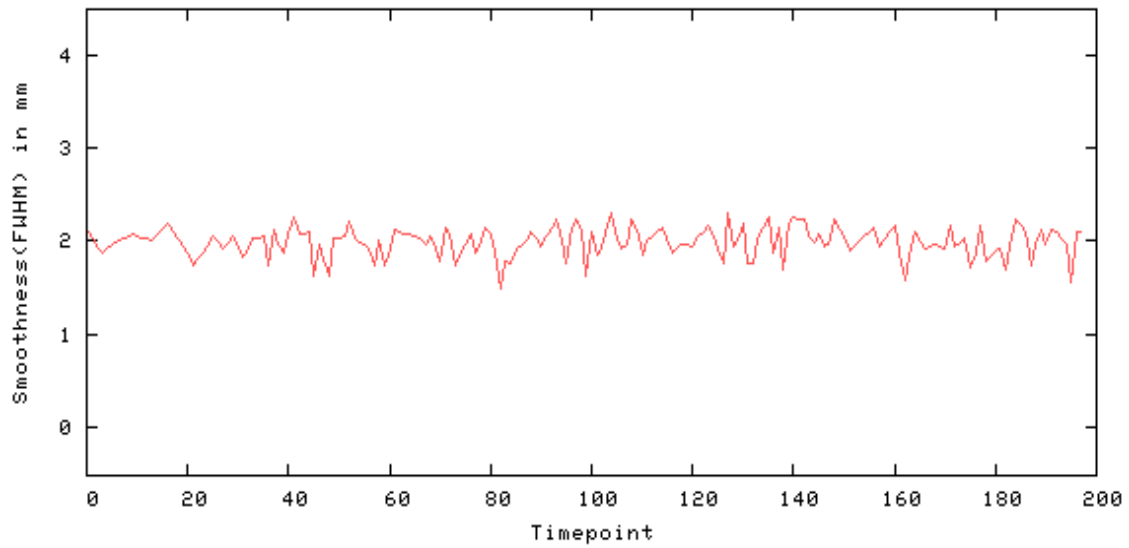
Smoothness - Y

Smoothness(FWHM) in mm - Y: [min mean max] = [2.396 2.454 2.532]



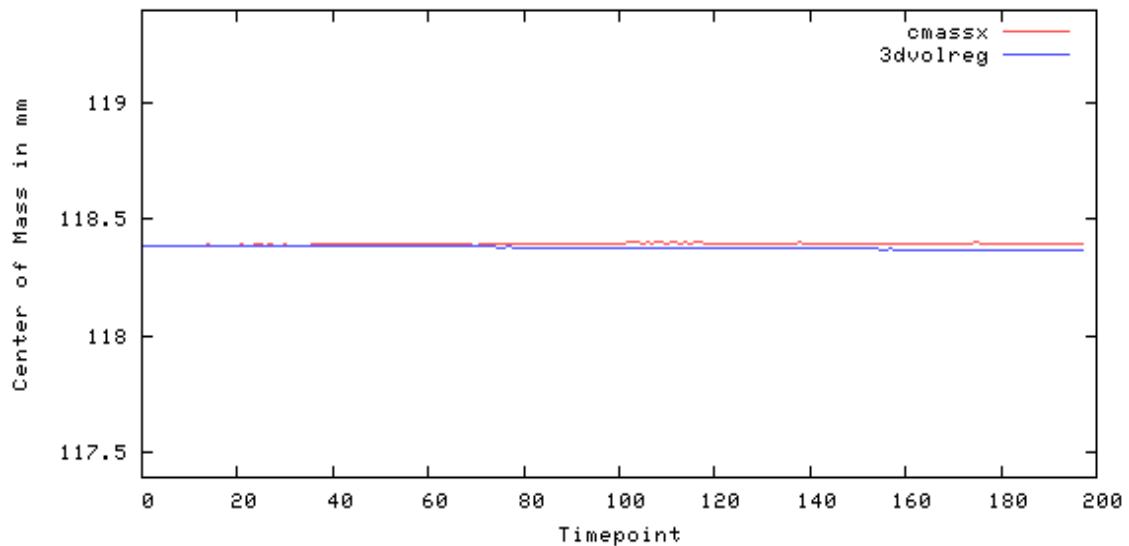
Smoothness - Z

Smoothness(FWHM) in mm - Z: [min mean max] = [1.498 1.986 2.311]

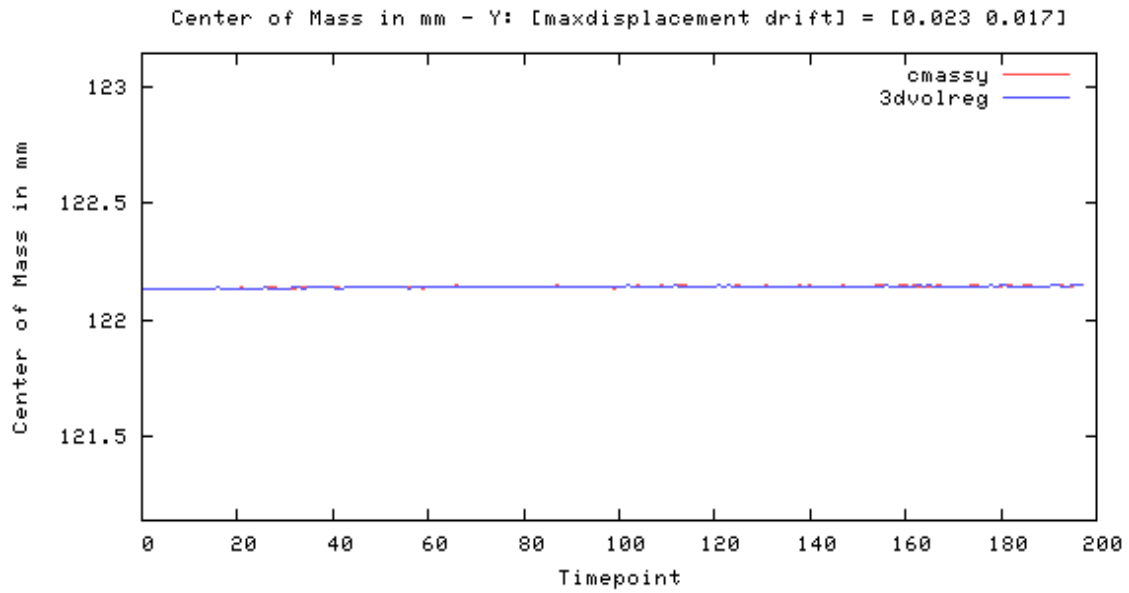


Center of Mass - X

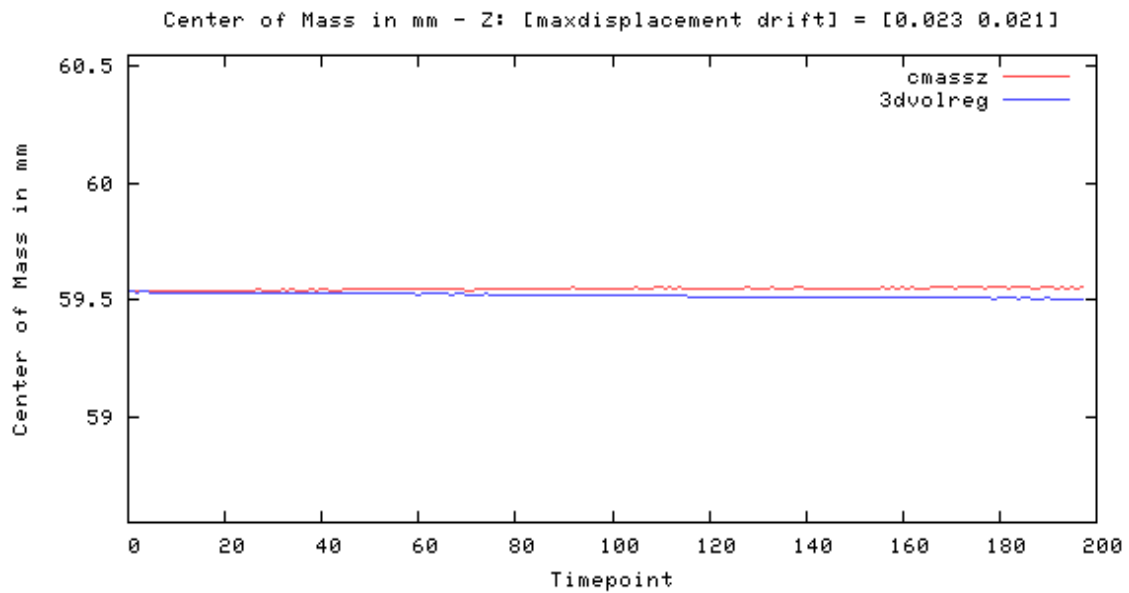
Center of Mass in mm - X: [maxdisplacement drift] = [0.023 0.012]



Center of Mass - Y

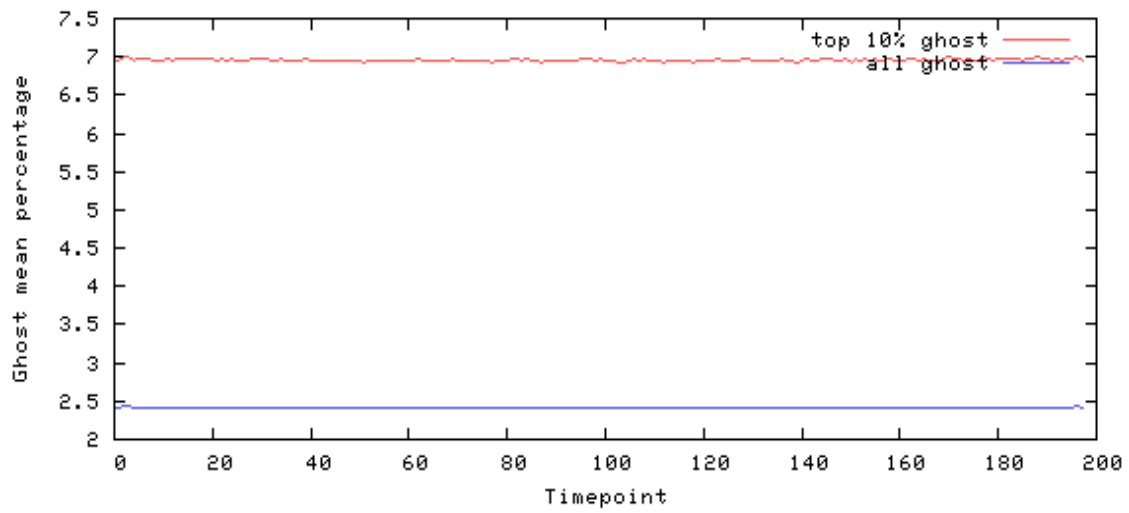


Center of Mass - Z

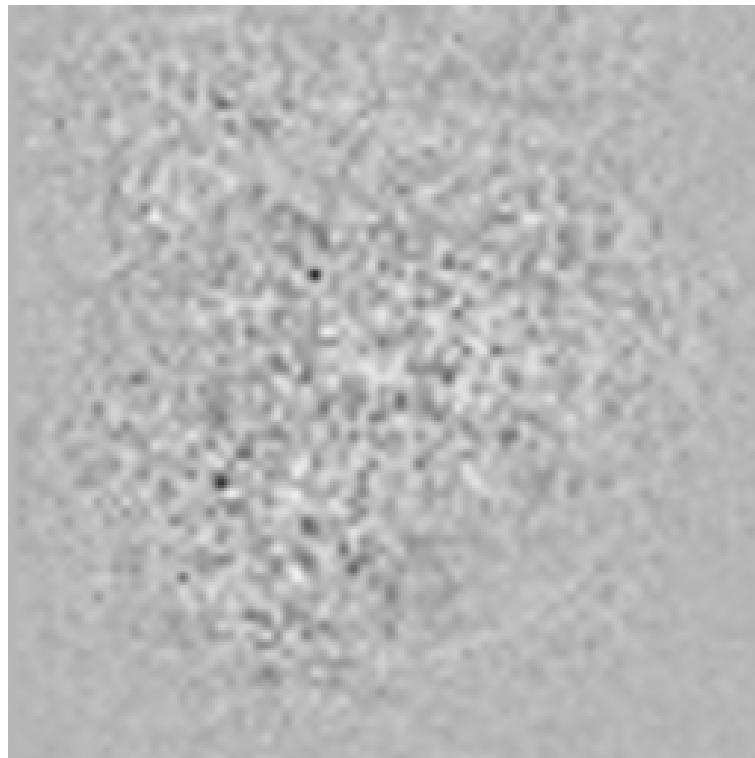


Ghost

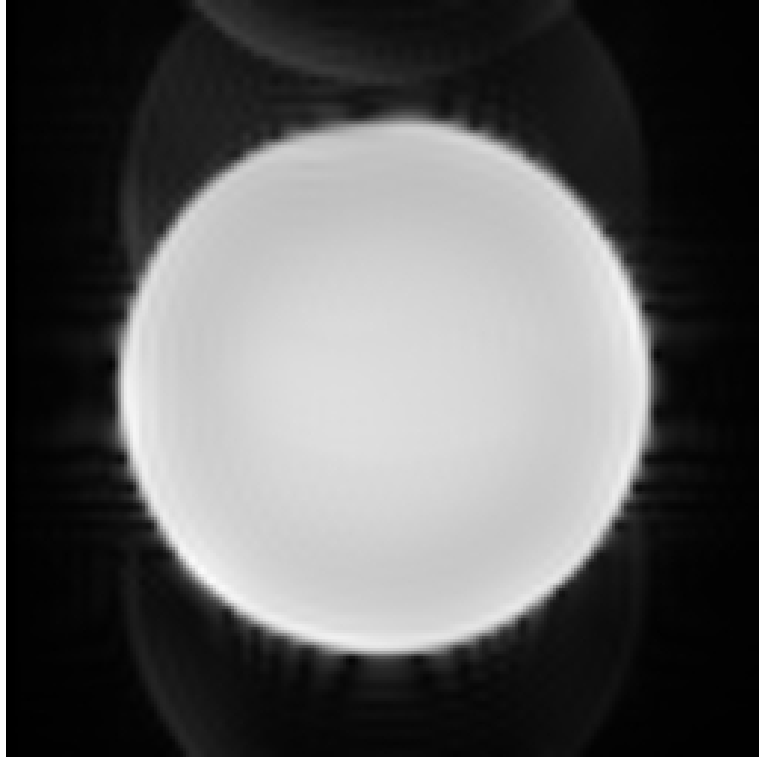
Mean of ghost voxels as % of non-ghost [masked] mean
(ghostmean, brightghostmean) = (2.419, 6.960)
(lower is better)



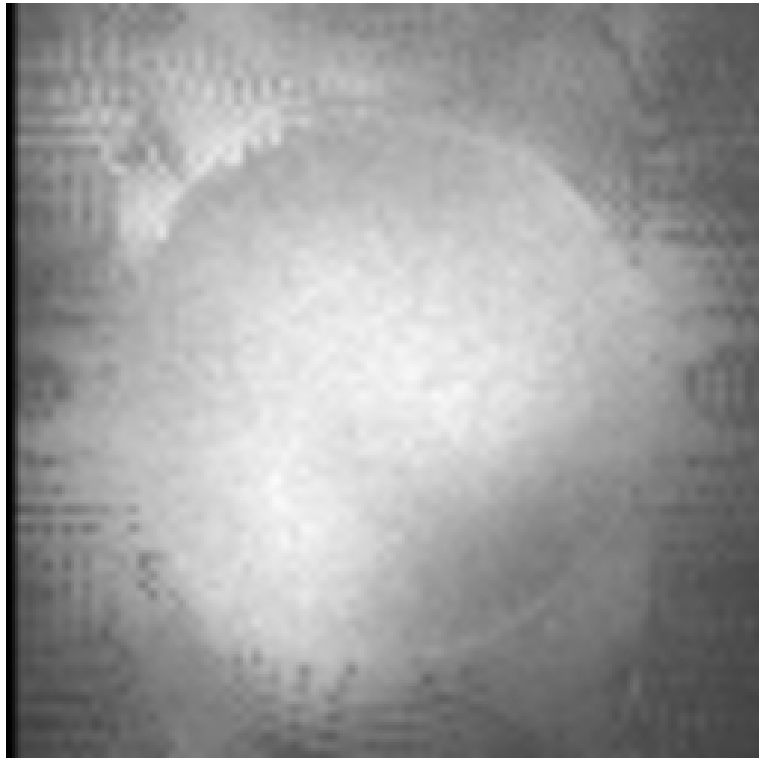
Odd-Even Difference Image



Mean Image



Standard Deviation Image



SFNR Image

