

Dartmouth Brain Imaging Center (DBIC)

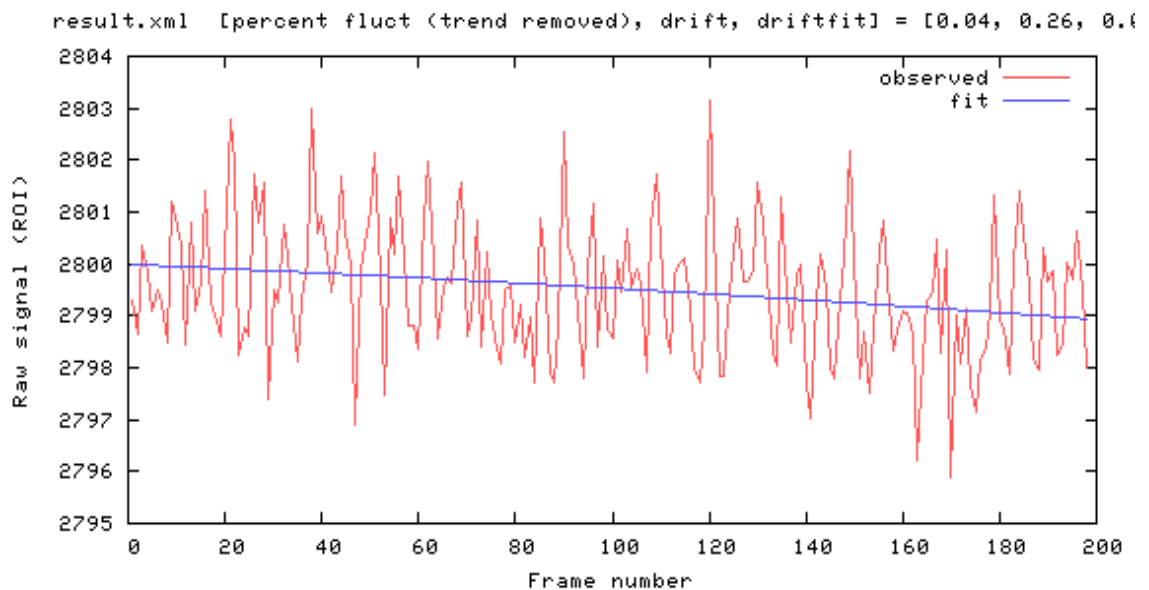
QA Report 64 CH

05302023

Measurements

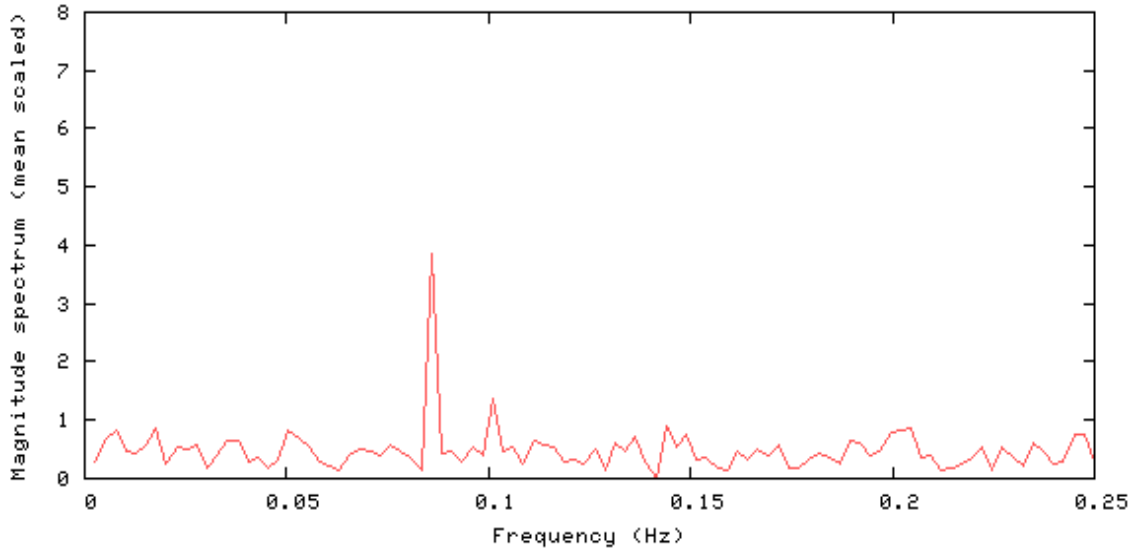
| Measurements | Value |
|------------------------------------|--------|
| mean signal (mean) | 2799.5 |
| Signal to Noise Ratio (SNR) | 188.8 |
| Signal to Fluctuation Ratio (SFNR) | 199.5 |
| Percent Fluctuation | 0.04 |
| Drift | 0.26 |
| Radius of Decorrelation (RDC) | 12.2 |
| Mean Ghost Percentage | 2.145 |
| Standard Deviation (std) | 1.26 |

Signal



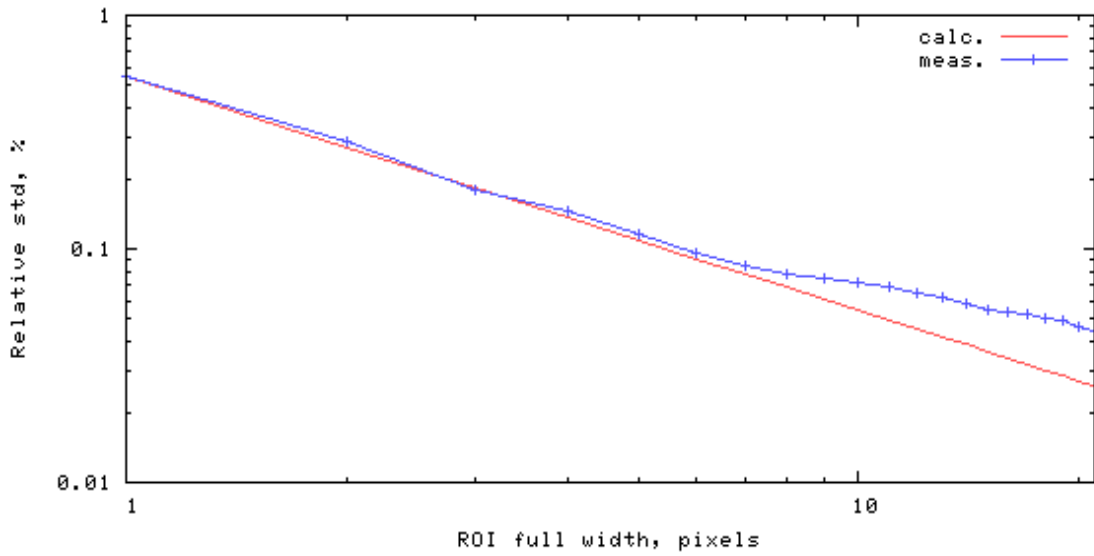
Frequency Spectrum

[mean, SNR, SFNR] = [2799.5 188.8 199.5]



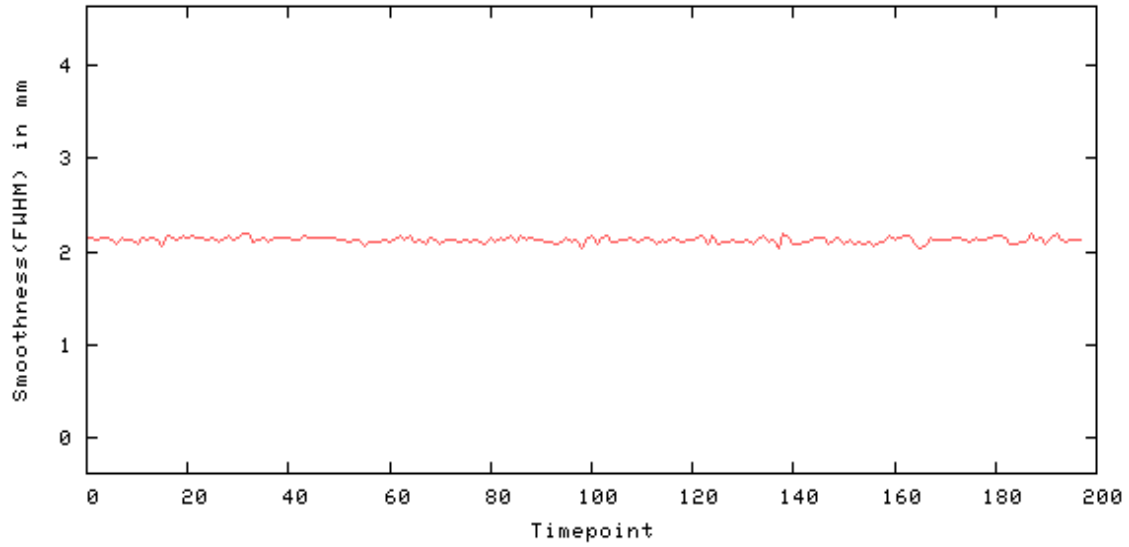
Radius of Decorrelation

rdc = 12.2 pixels



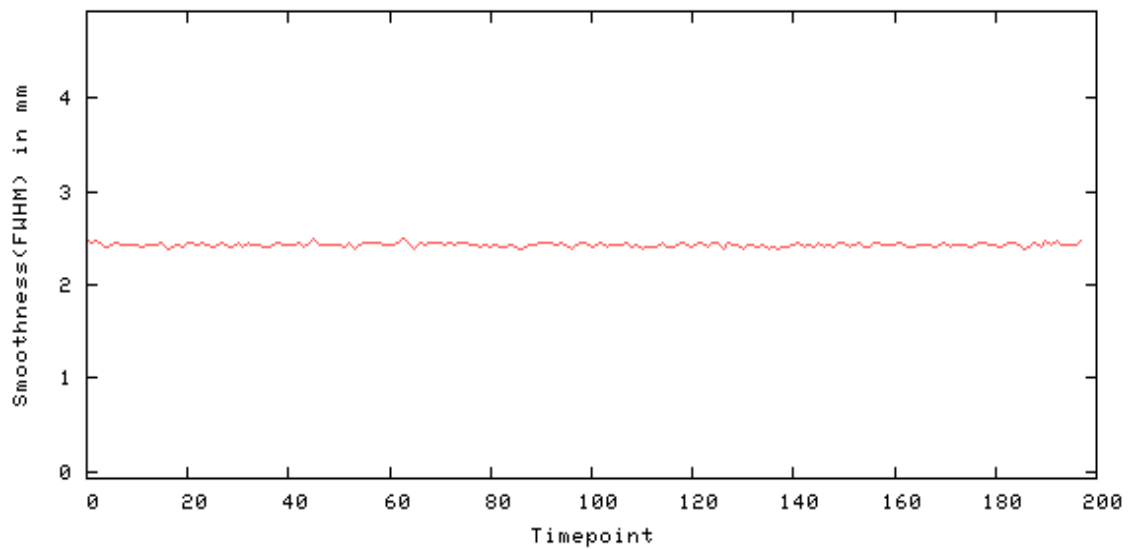
Smoothness - X

Smoothness(FWHM) in mm - X: [min mean max] = [2.029 2.126 2.200]



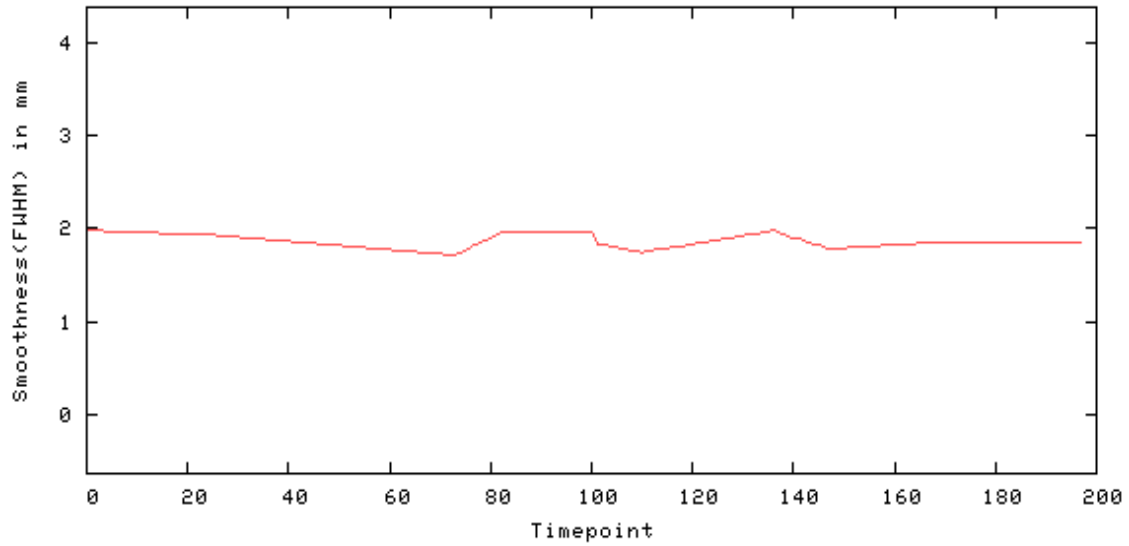
Smoothness - Y

Smoothness(FWHM) in mm - Y: [min mean max] = [2.374 2.429 2.490]



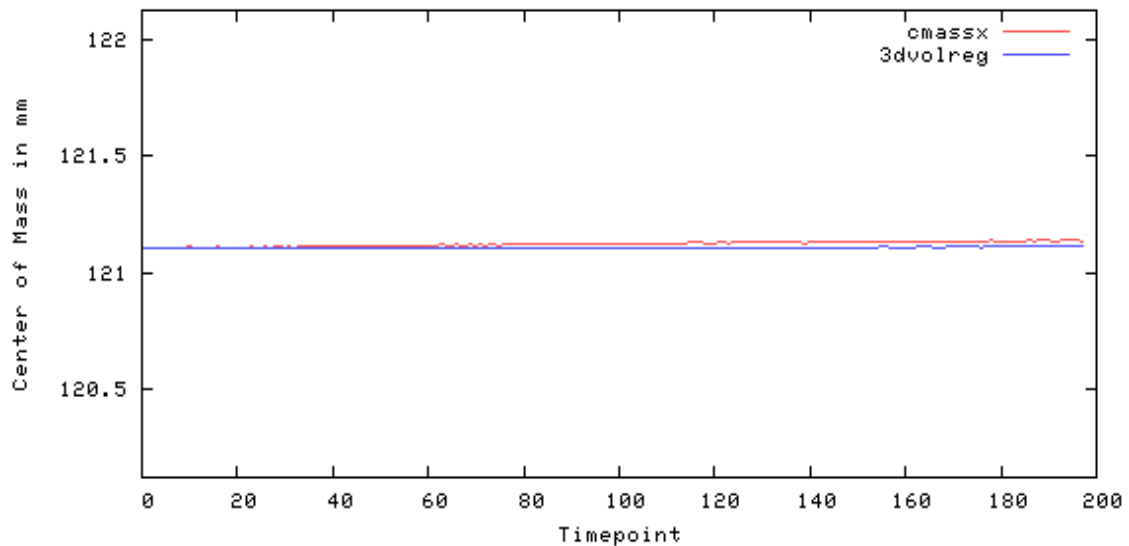
Smoothness - Z

Smoothness(FWHM) in mm - Z: [min mean max] = [1.720 1.876 1.980]

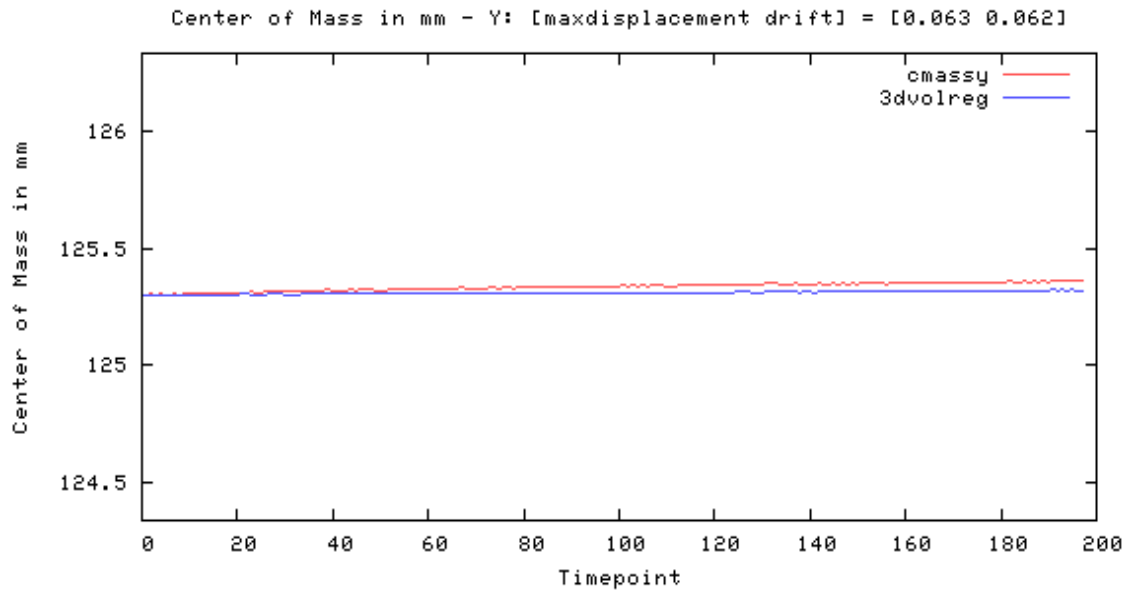


Center of Mass - X

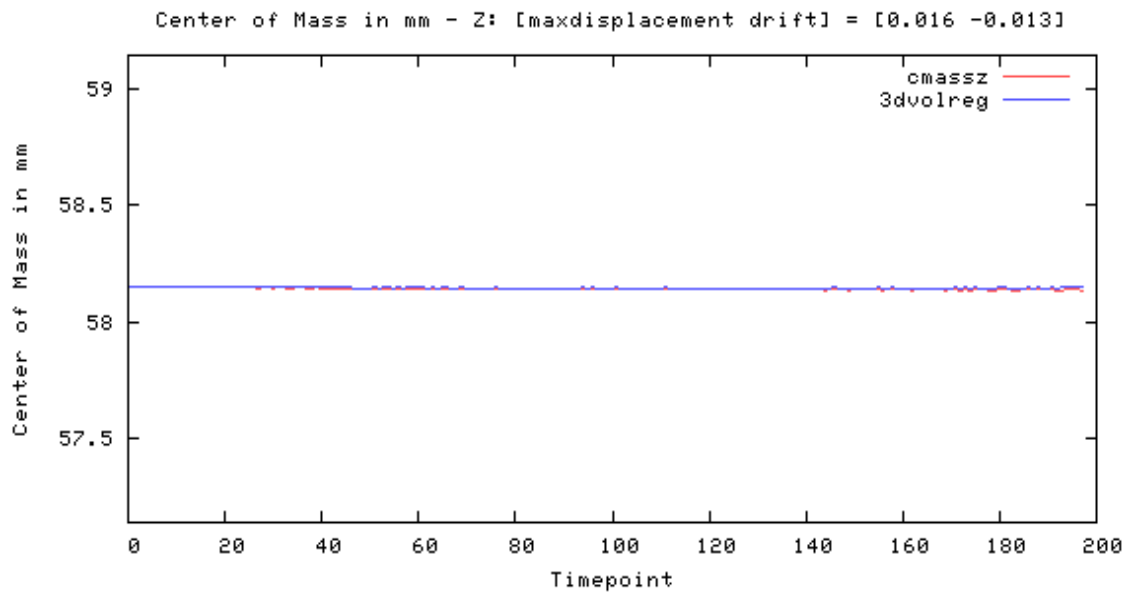
Center of Mass in mm - X: [maxdisplacement drift] = [0.036 0.032]



Center of Mass - Y

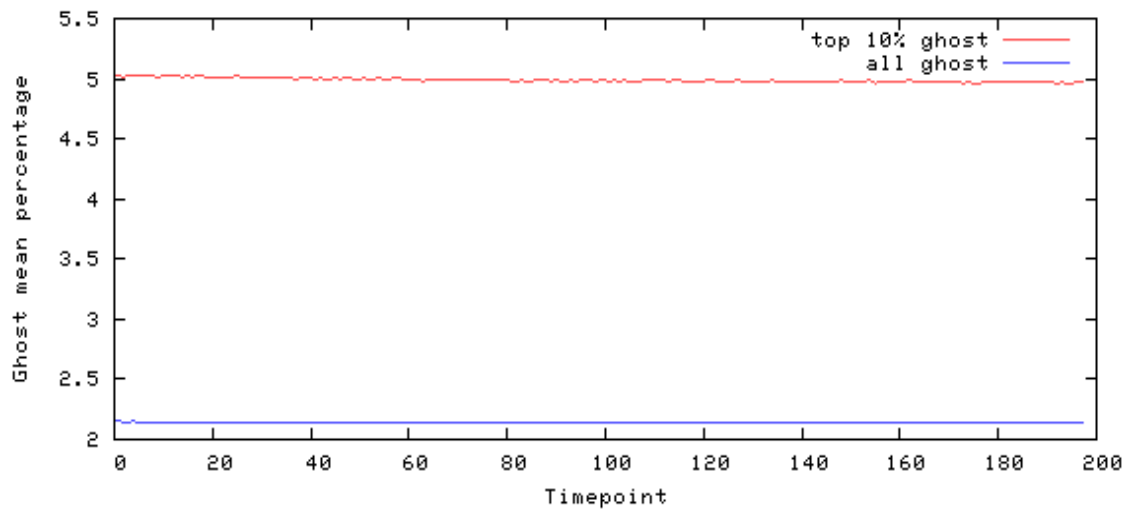


Center of Mass - Z

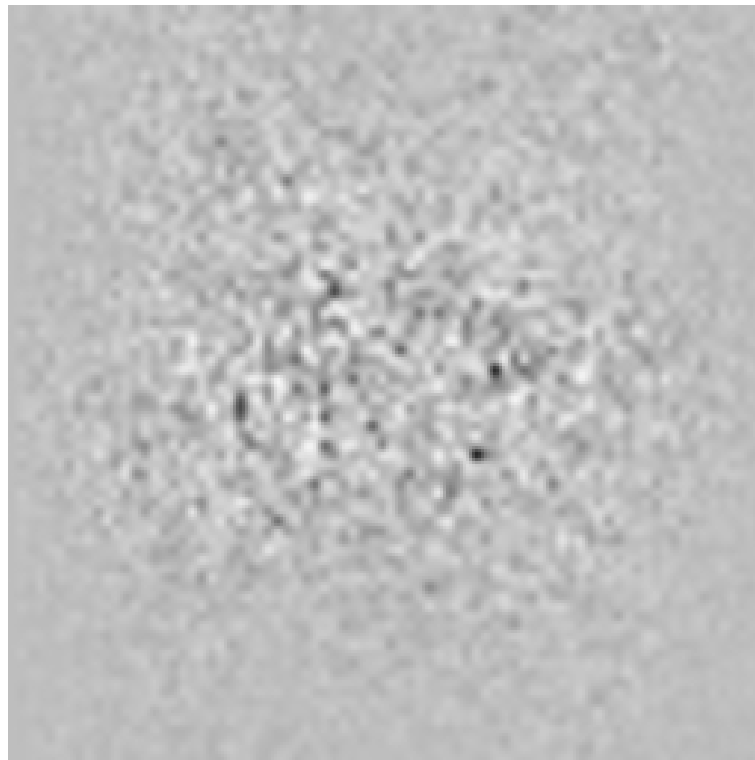


Ghost

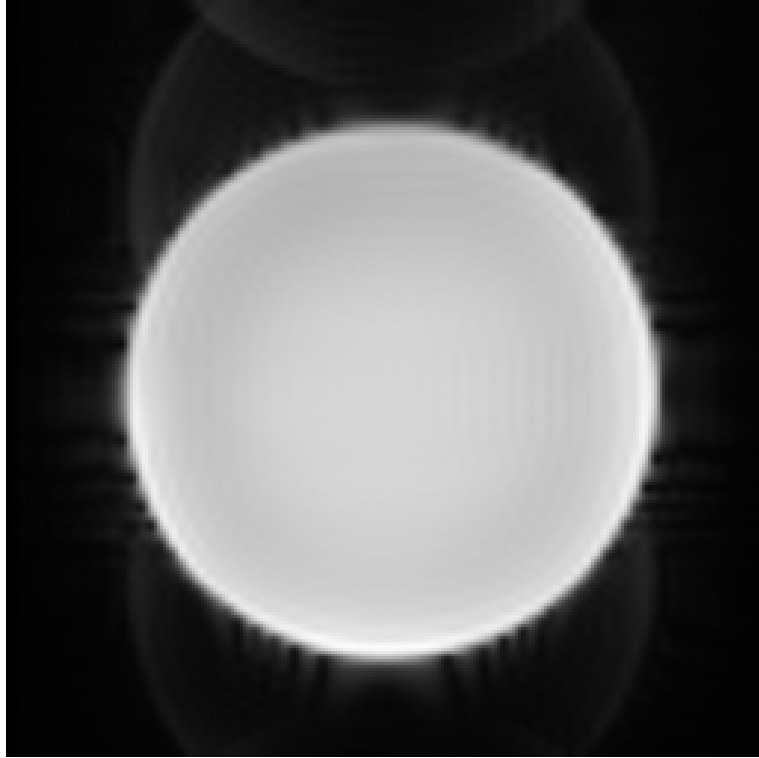
Mean of ghost voxels as % of non-ghost [masked] mean
(ghostmean, brightghostmean) = (2.145, 4.990)
(lower is better)



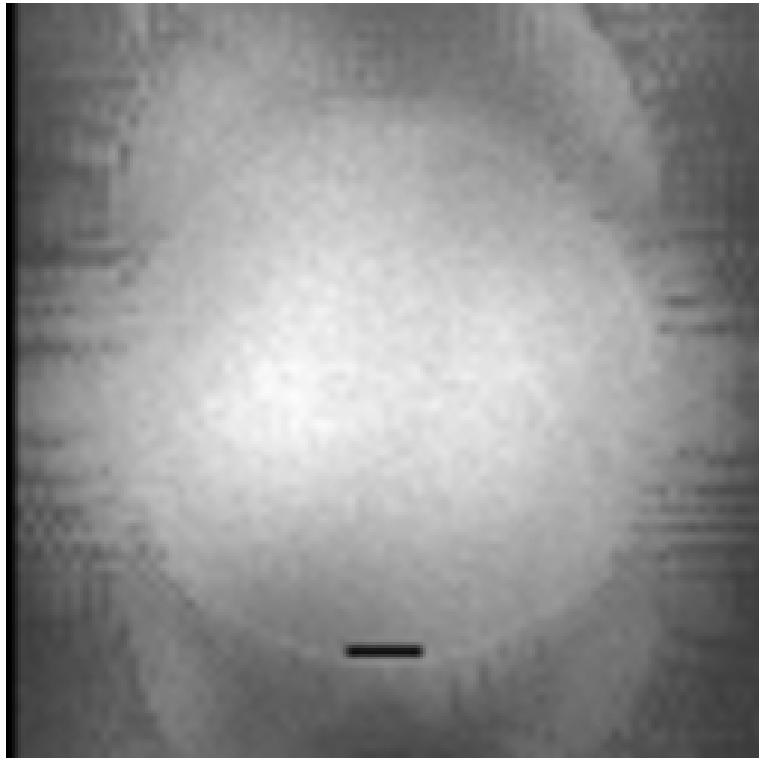
Odd-Even Difference Image



Mean Image



Standard Deviation Image



SFNR Image

